



Mumme Family manufacturing in Australia since 1936

Mumme Tools Pty Ltd

Catalogue

Mumme Tools Pty Ltd
PO Box 126, Lonsdale, Australia 5160
24-34 Dorset St, Lonsdale, Australia 5160

Phone: +61 8 8186 0000
Fax: +61 8 8186 2222

e-mail: info@mummeproducts.com.au

Web Site: www.mummeproducts.com.au

Mumme Products

Aligning	Page 3 - 5
Bars	Page 6 - 11
Bolsters	Page 12
Chisels	Page 13 - 18
Cold Sets	Page 18
Drill Sleeves	Page 19
Fencing	Page 19
G - Clamps	Page 20
Grips	Page 21
Hammers	Page 22 - 27
Handles	Page 28
Ladders & Trestles	Page 29 - 30
Masonry	Page 31 - 32
Pegs	Page 33
Picks	Page 34 - 35
Plumbing	Page 36
Punches	Page 37 - 38
Rakes	Page 39
Scrapers	Page 40
Shovels	Page 41 - 43
Soldering	Page 43
Tongs	Page 44
Tyre	Page 45 - 47
Wedges	Page 48

James Watt Tools

Chisels	Page 2 - 3
Punches	Page 4 - 11

Aligning

Barrel Drifts



- USED FOR ALIGNING HOLES IN CONSTRUCTION
- ALSO USED FOR EXPANDING HOLES IN MILD STEEL
- FORGED FROM TOUGH HIGH TENSILE CARBON-MANGANESE STEEL
- TAPER IS FORGED, NOT TURNED, FOR FINER GRAIN, GIVING GREATER TENSILE STRENGTH
- WILL NOT SCORE EDGE WHEN DRIVEN HARD

- CORRECTLY HEAT TREATED TO BEST SUIT PRODUCT APPLICATION
- * WARNING WEAR SAFETY GOGGLES USER AND BYSTANDER

Part No.	Product Description	Pack Qty	Weight ea
5BD12	12mm BARREL DRIFT	3	0.12kg
5BD14	14mm BARREL DRIFT	3	0.16kg
5BD16	16mm BARREL DRIFT	3	0.17kg
5BD18	18mm BARREL DRIFT	3	0.25kg
5BD19	19mm BARREL DRIFT	3	0.28kg
5BD20	20mm BARREL DRIFT	3	0.35kg
5BD22	22mm BARREL DRIFT	3	0.50kg
5BD24	24mm BARREL DRIFT	3	0.52kg
5BD25	25mm BARREL DRIFT	3	0.54kg
5BD26	26mm BARREL DRIFT	3	0.60kg
5BD27	27mm BARREL DRIFT	3	0.63kg
5BD30	30mm BARREL DRIFT	3	0.80kg
5BD33	33mm BARREL DRIFT	3	1.04kg

Podger Bars



- USED FOR LEVERING AND ALIGNING
- FORGED FROM TOUGH HIGH TENSILE CARBON-MANGANESE STEEL
- HEEL SET TO 40° FOR OPTIMUM LEVERING, BLADE GROUND TO 30° FOR EASY ENTRY BETWEEN SURFACES
- TAPER IS FORGED, NOT TURNED, FOR MAXIMUM STRENGTH
- HEX PROFILE BAR USED FOR GREATER CONTROL AND TO MINIMISE BAR ROLL

- CORRECTLY HEAT TREATED TO BEST SUIT PRODUCT APPLICATION
- * WARNING WEAR SAFETY GOGGLES USER AND BYSTANDER

Part No.	Product Description	Pack Qty	Weight ea
5POB37516	375x16mm PODGER BAR - HEXAGON	3	0.55kg
5POB37520	375x20mm PODGER BAR - HEXAGON	3	0.83kg
5POB45016	450x16mm PODGER BAR - HEXAGON	3	0.68kg
5POB45020	450x20mm PODGER BAR - HEXAGON	3	1.03kg
5POB60020	600x20mm PODGER BAR - HEXAGON	3	1.43kg
5POB90020	900x20mm PODGER BAR - HEXAGON	3	2.20kg



**Quality Forged Hand Tools
Unconditionally Guaranteed***

***"Correctly Hardened & Tempered
for Maximum Toughness"***

**Against Faulty Materials & Workmanship.*

Aligning

Podger Pins



- USED FOR ALIGNING HOLES AND EXPANDING HOLES IN MILD STEEL
- FORGED FROM TOUGH HIGH TENSILE CARBON MANGANESE STEEL
- FORGED, NOT TURNED, LONG TAPERED POINT FOR EASE OF ALIGNING
- FOR ADDED SAFETY FORGED HEAD PREVENTS PIN BEING DRIVEN RIGHT THROUGH HOLE & FALLING
- CAN BE CARRIED ON BELT

- CORRECTLY HEAT TREATED TO BEST SUIT PRODUCT APPLICATION
- * WARNING WEAR SAFETY GOGGLES USER AND BYSTANDER

Part No.	Product Description	Pack Qty	Weight ea
5POP25	25mm PODGER PIN	2	1.48kg
5POP30	30mm PODGER PIN	2	2.04kg

Pry Bar



- USED FOR PRYING, SEPARATING FLANGES AND ALIGNING HOLES
- FORGED FROM TOUGH HIGH TENSILE CARBON MANGANESE STEEL
- THIN FINELY GROUND CURVED CHISEL END FOR EASE OF ENTRY BETWEEN SURFACES
- FORGED, NOT TURNED LONG TAPERED POINT FOR MAXIMUM STRENGTH
- HEXAGON BAR PROFILE FOR GREATER CONTROL

- CORRECTLY HEAT TREATED TO BEST SUIT PRODUCT APPLICATION
- * WARNING WEAR SAFETY GOGGLES USER AND BYSTANDER

Part No.	Product Description	Pack Qty	Weight ea
5PRBP45016	450x16mm PRY BAR POINTED - HEXAGON	3	0.76kg

Scaffold Hammer



- DUAL-PURPOSE TOOL USED FOR SCAFFOLD ASSEMBLY
- FORGED FROM HIGH TENSILE CARBON MANGANESE STEEL FOR STRENGTH
- GOOD BALANCE AND WEIGHT
- FORGED, NOT TURNED TAPERED POINT IDEAL FOR ALIGNING
- WILL NOT BREAK OFF NEXT TO HEAD, AS CAN HAPPEN WITH CAST PRODUCTS

- CORRECTLY HEAT TREATED TO BEST SUIT PRODUCT APPLICATION
- * WARNING WEAR SAFETY GOGGLES USER AND BYSTANDER

Part No.	Product Description	Pack Qty	Weight ea
5HSC	SCAFFOLD HAMMER	2	0.83kg



**Quality Forged Hand Tools
Unconditionally Guaranteed***

***"Correctly Hardened & Tempered
for Maximum Toughness"***

**Against Faulty Materials & Workmanship.*

Aligning

Spoon Bars



- USED FOR LEVERING, PRYING BETWEEN SURFACES AND ALIGNING HOLES
- FORGED FROM RESILIENT 4140 (AXLE) STEEL
- THIN FINELY GROUND BLADE END FOR EASE OF ENTRY BETWEEN SURFACES
- FORGED, NOT TURNED LONG TAPERED POINT IDEAL FOR ALIGNING
- FULL LENGTH HEAT TREATMENT OF SHAFT FOR BEST PERFORMANCE

- CORRECTLY HEAT TREATED TO BEST SUIT PRODUCT APPLICATION
- * WARNING WEAR SAFETY GOGGLES USER AND BYSTANDER

Part No.	Product Description	Pack Qty	Weight ea
5SB115025	1150x25mm SPOON BAR - 4140 GRADE	2	4.42kg
5SB135025	1350x25mm SPOON BAR - 4140 GRADE	2	4.80kg
5SB30010	300x10mm SPOON BAR - 4140 GRADE	3	0.16kg
5SB45016	450x16mm SPOON BAR - 4140 GRADE	3	0.60kg
5SB60020	600x20mm SPOON BAR - 4140 GRADE	3	1.23kg
5SB75022	750x22mm SPOON BAR - 4140 GRADE	3	2.00kg

Starter Drifts



- USED FOR ALIGNING WORK, HOLES ETC. IN HEAVY CONSTRUCTION
- FORGED FROM TOUGH HIGH TENSILE CARBON-MANGANESE STEEL
- DESIGNED FOR DRIVING WITH HAMMER
- TAPER IS FORGED, NOT TURNED, FOR FINER GRAIN, GIVING GREATER TENSILE STRENGTH
- WILL NOT SCORE EDGE WHEN DRIVEN HARD
- HEX PROFILE FOR BETTER CONTROL

- CORRECTLY HEAT TREATED TO BEST SUIT PRODUCT APPLICATION
- * WARNING WEAR SAFETY GOGGLES USER AND BYSTANDER

Part No.	Product Description	Pack Qty	Weight ea
5SDL30016	300x16mm STARTER DRIFT - HEXAGON	2	0.44kg
5SDL45020	450x20mm STARTER DRIFT - HEXAGON	2	1.03kg
5SDL45025	450x25mm STARTER DRIFT - HEXAGON	2	1.58kg
5SDL45030	450x30mm STARTER DRIFT - HEXAGON	2	2.16kg



**Quality Forged Hand Tools
Unconditionally Guaranteed***

***"Correctly Hardened & Tempered
for Maximum Toughness"***

**Against Faulty Materials & Workmanship.*

Bars

Crowbars - Hexagon



- USED FOR DIGGING HOLES, BREAKING CLAY, ROCK AND CONCRETE
- FORGED FROM TOUGH HIGH TENSILE CARBON MANGANESE STEEL
- GROUND & SHARPENED DIAMOND POINT END FOR EASIER DIGGING, ESP. IN ROCKY GROUND
- LONG AND SHARPER TAPERED ENDS HEAT TREATED FULL LENGTH FOR BETTER PERFORMANCE
- HEXAGON BAR PROFILE FOR GREATER CONTROL

- ANTI-CORROSIVE PRIMER AND ENAMEL FINISH
- CORRECTLY HEAT TREATED TO BEST SUIT PRODUCT APPLICATION
- * WARNING WEAR SAFETY GOGGLES USER AND BYSTANDER

Part No.	Product Description	Pack Qty	Weight ea
5CB150025	1500x25mm CROWBAR - HEXAGON	3	6.12kg
5CB150030	1500x30mm CROWBAR - HEXAGON	2	8.60kg
5CB165025	1650x25mm CROWBAR - HEXAGON	3	6.70kg
5CB165030	1650x30mm CROWBAR - HEXAGON	2	9.50kg
5CB180025	1800x25mm CROWBAR - HEXAGON	3	7.35kg
5CB180030	1800x30mm CROWBAR - HEXAGON	2	10.45kg

Crowbars - Round



- USED FOR DIGGING HOLES, BREAKING CLAY, ROCK AND CONCRETE
- FORGED FROM TOUGH HIGH TENSILE CARBON MANGANESE STEEL
- GROUND & SHARPENED DIAMOND POINT END FOR EASIER DIGGING, ESP. IN ROCKY GROUND
- LONG AND SHARPER TAPERED ENDS HEAT TREATED FULL LENGTH FOR BETTER PERFORMANCE
- ROUND BAR PROFILE GOOD FOR COMFORT, EASIER ON HANDS

- ANTI-CORROSIVE PRIMER AND ENAMEL FINISH
- CORRECTLY HEAT TREATED TO BEST SUIT PRODUCT APPLICATION
- * WARNING WEAR SAFETY GOGGLES USER AND BYSTANDER

Part No.	Product Description	Pack Qty	Weight ea
5CBR180022	1800x22mm CROWBAR - ROUND	3	5.50kg
5CBR180025	1800x27mm CROWBAR - ROUND	3	7.75kg
5CBR180030	1800x30mm CROWBAR - ROUND	2	9.70kg



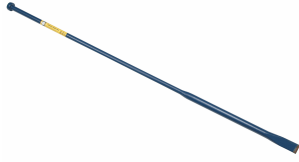
**Quality Forged Hand Tools
Unconditionally Guaranteed***

***"Correctly Hardened & Tempered
for Maximum Toughness"***

**Against Faulty Materials & Workmanship.*

Bars

Fence Bar - Loaded



- USED FOR FENCING INC. DIGGING HOLES, BREAKING CLAY AND TAMPING POSTS TIGHT
- FORGED FROM TOUGH HIGH TENSILE CARBON MANGANESE STEEL
- BLADE END HAS MORE WEIGHT THAN ORDINARY FENCE BAR FOR BETTER DIGGING PENETRATION
- LONG AND SHARPER TAPERED BLADE HEAT TREATED FULL LENGTH FOR BETTER PERFORMANCE
- KNOB FORGED ON BAR, NOT WELDED, MADE TO OPTIMUM SIZE FOR TAMPING

- CORRECTLY HEAT TREATED TO BEST SUIT PRODUCT APPLICATION
- * WARNING WEAR SAFETY GOGGLES USER AND BYSTANDER

Part No.	Product Description	Pack Qty	Weight ea
5FBL1800	1800mm LOADED FENCE BAR	2	10.84kg

Fence Bars - Hexagon



- USED FOR FENCING INC. DIGGING HOLES, BREAKING CLAY AND TAMPING POSTS TIGHT
- FORGED FROM TOUGH HIGH TENSILE CARBON MANGANESE STEEL
- LONG AND SHARPER TAPERED BLADE HEAT TREATED FULL LENGTH FOR BETTER PERFORMANCE
- KNOB FORGED ON BAR, NOT WELDED, MADE TO OPTIMUM SIZE FOR TAMPING
- HEXAGON BAR PROFILE FOR GREATER CONTROL

- CORRECTLY HEAT TREATED TO BEST SUIT PRODUCT APPLICATION
- * WARNING WEAR SAFETY GOGGLES USER AND BYSTANDER

Part No.	Product Description	Pack Qty	Weight ea
5FB150025	1500x25mm FENCE BAR - HEXAGON	3	6.50kg
5FB150030	1500x30mm FENCE BAR - HEXAGON	2	9.25kg
5FB165025	1650x25mm FENCE BAR - HEXAGON	3	7.01kg
5FB165030	1650x30mm FENCE BAR - HEXAGON	2	10.15kg
5FB180025	1800x25mm FENCE BAR - HEXAGON	3	7.77kg
5FB180030	1800x30mm FENCE BAR - HEXAGON	2	11.05kg



**Quality Forged Hand Tools
Unconditionally Guaranteed***

***"Correctly Hardened & Tempered
for Maximum Toughness"***

**Against Faulty Materials & Workmanship.*

Bars

Fence Bars - Round

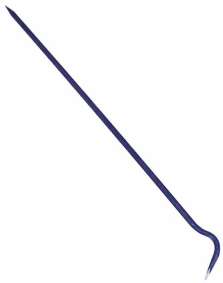


- USED FOR FENCING INC. DIGGING HOLES, BREAKING CLAY AND TAMPING POSTS TIGHT
- FORGED FROM TOUGH HIGH TENSILE CARBON MANGANESE STEEL
- LONG AND SHARPER TAPERED BLADE HEAT TREATED FULL LENGTH FOR BETTER PERFORMANCE
- KNOB FORGED ON BAR, NOT WELDED, MADE TO OPTIMUM SIZE FOR TAMPING
- ROUND BAR PROFILE GOOD FOR COMFORT, EASIER ON HANDS

- CORRECTLY HEAT TREATED TO BEST SUIT PRODUCT APPLICATION
- * WARNING WEAR SAFETY GOGGLES USER AND BYSTANDER

Part No.	Product Description	Pack Qty	Weight ea
5FBR165025	1650x27mm FENCE BAR - ROUND	3	7.55kg
5FBR180025	1800x27mm FENCE BAR - ROUND	3	8.18kg
5FBR180030	1800x30mm FENCE BAR - ROUND	2	10.25kg

Goose Neck Bar



- USED FOR LEVERING & MOVING OBJECTS INTO PLACE WITH A LIFT AND SWIVEL MOTION
- FORGED FROM TOUGH HIGH TENSILE CARBON MANGANESE STEEL
- DIAMOND POINT & GOOSENECK ENDS FOR FLEXIBILITY OF USE
- GOOSENECK SET FOR IMPROVED LEVERAGE
- HEXAGON BAR PROFILE FOR GREATER CONTROL

- CORRECTLY HEAT TREATED TO BEST SUIT PRODUCT APPLICATION
- * WARNING WEAR SAFETY GOGGLES USER AND BYSTANDER

Part No.	Product Description	Pack Qty	Weight ea
5GNB180030	1800x30mm GOOSE NECK BAR - HEXAGON	2	11.10kg

Insulated Bar



- USED FOR DIGGING & FENCING WITH SHARP DIGGING BLADE & FORGED RAMMING HEAD
- MADE FROM TOUGH HIGH TENSILE CARBON MANAGANESE STEEL
- NON-CONDUCTIVE COMFORTABLE RUBBER COATED GRIP BONDED TO STEEL 38MM OD
- ** A SAMPLE BAR HAS BEEN TESTED BY SEQEB (ENERGEX) TO 15000 VOLTS**
- ** ANY DAMAGE TO THE INSULATION COULD RESULT IN A LOWERING OF INSULATION ABILITIES**

- CORRECTLY HEAT TREATED TO BEST SUIT PRODUCT APPLICATION
- * WARNING EYE PROTECTION & GLOVES MUST BE WORN WHEN USING THIS PRODUCT

Part No.	Product Description	Pack Qty	Weight ea
7IB1650	1650mm INSULATED BAR - RUBBER COATED	Min Buy 2	6.14kg

The following products are manufactured to order and have a minimum order qty (can include multiple sizes) and lead time.



**Quality Forged Hand Tools
Unconditionally Guaranteed***

**"Correctly Hardened & Tempered
for Maximum Toughness"**

**Against Faulty Materials & Workmanship.*

Bars

Pinch Bars



- USED FOR LEVERING AND MOVING OBJECTS INTO PLACE WITH A LIFT AND SWIVEL MOTION
- FORGED FROM HIGH TENSILE CARBON MANGANESE STEEL FOR MAXIMUM STRENGTH
- HEEL OFFSET TO 40° FOR OPTIMUM LIFTING
- HEXAGON BAR PROFILE FOR GREATER CONTROL
- HEAT TREATED BLADE ENDS FOR MAXIMUM TOUGHNESS
- CORRECTLY HEAT TREATED TO BEST SUIT PRODUCT APPLICATION
- * WARNING WEAR SAFETY GOGGLES USER AND BYSTANDER

Part No.	Product Description	Pack Qty	Weight ea
5PB150025	1500x25mm PINCH BAR - HEXAGON	3	6.15kg
5PB150030	1500x30mm PINCH BAR - HEXAGON	2	8.90kg
5PB165025	1650x25mm PINCH BAR - HEXAGON	3	6.81kg
5PB165030	1650x30mm PINCH BAR - HEXAGON	2	9.94kg
5PB180025	1800x25mm PINCH BAR - HEXAGON	3	7.63kg
5PB180030	1800x30mm PINCH BAR - HEXAGON	2	11.02kg
5PB45016	450x16mm PINCH BAR - HEXAGON	3	0.72kg
5PB60020	600x20mm PINCH BAR - HEXAGON	3	1.53kg
5PB60025	600x25mm PINCH BAR - HEXAGON	3	2.41kg
5PB75025	750x25mm PINCH BAR - HEXAGON	3	3.04kg
5PB90025	900x25mm PINCH BAR - HEXAGON	3	3.65kg

Scaling Bars - Aluminium



- USED IN THE MINING INDUSTRY FOR PRYING OVERHANGING ROCK
- ALUMINIUM TUBE BODY FOR LIGHT WEIGHT AND LESS USER FATIGUE
- FORGED STEEL ENDS FOR STRENGTH
- HEEL OFFSET TO 40 DEGREES FOR OPTIMUM LEVERING.
- CORRECTLY HEAT TREATED TO BEST SUIT PRODUCT APPLICATION
- * WARNING EYE PROTECTION & GLOVES MUST BE WORN WHEN USING THIS PRODUCT

Part No.	Product Description	Pack Qty	Weight ea
The following products are manufactured to order and have a minimum order qty (can include multiple sizes) and lead time.			
7SCTH1800	1800mm SCALING BAR HEX HOLLOW ALUMINIUM	Min Buy 20	5 2.97kg
7SCTH2400	2400mm SCALING BAR HEX HOLLOW ALUMINIUM	Min Buy 20	5 3.41kg
7SCTH3000	3000mm SCALING BAR HEX HOLLOW ALUMINIUM	Min Buy 20	5 3.84kg

Part No.	Product Description	Pack Qty	Weight ea
The following products are manufactured to order and have a minimum order qty (can include multiple sizes) and lead time.			
7SCT1800	1800mm ALUMINIUM SCALING BAR	Min Buy 20	5 2.89kg
7SCT2400	2440mm ALUMINIUM SCALING BAR	Min Buy 20	5 3.33kg
7SCT3050	3050mm ALUMINIUM SCALING BAR	Min Buy 20	5 3.76kg
7SCT3660	3660mm ALUMINIUM SCALING BAR	Min Buy 20	5 4.20kg
7SCT4320	4320mm ALUMINIUM SCALING BAR	Min Buy 20	5 4.63kg



**Quality Forged Hand Tools
Unconditionally Guaranteed***

**"Correctly Hardened & Tempered
for Maximum Toughness"**

**Against Faulty Materials & Workmanship.*

Bars

Scaling Bars - Steel



- USED IN THE MINING INDUSTRY FOR PRYING OVERHANGING ROCK
- FORGED FROM CHROME ALLOY STEEL.
- HEAT TREATED BLADES FOR MAXIMUM TOUGHNESS
- HEX PROFILE FOR GOOD CONTROL
- HEEL OFFSET TO 40 DEGREES FOR OPTIMUM LEVERING
- CORRECTLY HEAT TREATED TO BEST SUIT PRODUCT APPLICATION
- * WARNING EYE PROTECTION & GLOVES MUST BE WORN WHEN USING THIS PRODUCT

Part No.	Product Description	Pack Qty	Weight ea
The following products are manufactured to order and have a minimum order qty (can include multiple sizes) and lead time.			
7SC120019	1200x20mm SCALING BAR - HEXAGON	Min Buy 50	3.12kg
7SC150019	1500x20mm SCALING BAR - HEXAGON	Min Buy 50	3.91kg
7SC180019	1800x20mm SCALING BAR - HEXAGON	Min Buy 50	4.68kg
7SC210019	2100x20mm SCALING BAR - HEXAGON	Min Buy 50	5.45kg
7SC240019	2400x20mm SCALING BAR - HEXAGON	Min Buy 50	6.24kg

Trench Bar



- USED FOR DIGGING AND SQUARING TRENCHES & HOLES AND TAMPING POSTS TIGHT
- FORGED FROM TOUGH HIGH TENSILE CARBON MANGANESE STEEL
- WIDE 113mm HEAVY DUTY BOLSTER BLADE FORGED, NOT WELDED, ON BAR FOR BETTER DURABILITY
- KNOB ALSO FORGED ON BAR, NOT WELDED, MADE TO OPTIMUM SIZE FOR TAMPING
- ROUND BAR PROFILE GOOD FOR COMFORT, EASIER ON HANDS
- CORRECTLY HEAT TREATED TO BEST SUIT PRODUCT APPLICATION
- * WARNING WEAR SAFETY GOGGLES USER AND BYSTANDER

Part No.	Product Description	Pack Qty	Weight ea
5TB180027	1800x27mm TRENCH BAR - ROUND	2	8.30kg



**Quality Forged Hand Tools
Unconditionally Guaranteed***

***"Correctly Hardened & Tempered
for Maximum Toughness"***

**Against Faulty Materials & Workmanship.*

Bars

Wrecking Bars



- USED FOR CONSTRUCTION, DEMOLITION AND WRECKING WORK
- FORGED FROM TOUGH HIGH TENSILE CARBON MANGANESE STEEL
- FINELY GROUND ENDS FOR GOOD LEAD IN, MAKES DEMOLITION WORK EASIER & QUICKER
- OPEN BEND TO GET BEHIND LARGER TIMBERS, HEX PROFILE FOR GREATER CONTROL
- WIDE & THIN ENDS LESS LIKELY TO DAMAGE TIMBERS WHEN REMOVING FOR RESTORATION

- CORRECTLY HEAT TREATED TO BEST SUIT PRODUCT APPLICATION
- * WARNING WEAR SAFETY GOGGLES USER AND BYSTANDER

Part No.	Product Description	Pack Qty	Weight ea
5WB30016	300x16mm WRECKING BAR - HEXAGON	6	0.60kg
5WB45016	450x16mm WRECKING BAR - HEXAGON	6	0.97kg
5WB60020	600x20mm WRECKING BAR - HEXAGON	6	1.80kg
5WB75020	750x20mm WRECKING BAR - HEXAGON	6	2.23kg
5WB90020	900x20mm WRECKING BAR - HEXAGON	6	2.60kg
5WBU	UTILITY WRECKING BAR - FLAT	3	0.60kg



12/07/2010

**Quality Forged Hand Tools
Unconditionally Guaranteed***

***"Correctly Hardened & Tempered
for Maximum Toughness"***

**Against Faulty Materials & Workmanship.*

Bolsters

Brick Bolster



- USED FOR FOR CUTTING BRICKS & CONCRETE
- FORGED FROM ONE PIECE OF TOUGH HIGH TENSILE CARBON MANGANESE STEEL
- HARDENED 113mm BLADE WILL ALSO CUT THROUGH BOLTS
- FINELY GROUND TO GIVE A STRAIGHT CUTTING EDGE
- FITTED WITH PROTECTIVE HAND GRIP FOR SAFETY

- CORRECTLY HEAT TREATED TO BEST SUIT PRODUCT APPLICATION
- * WARNING WEAR SAFETY GOGGLES USER AND BYSTANDER

Part No.	Product Description	Pack Qty	Weight ea
5BBO	BRICK BOLSTER C/W PROTECTIVE GRIP	6	0.90kg

Electrician Bolster



- USED FOR CHASING PLASTER & OTHER RENOVATION WORK
- FORGED FROM ONE PIECE OF TOUGH HIGH TENSILE CARBON MANGANESE STEEL
- HARDENED 63mm BLADE WILL ALSO CUT THROUGH BOLTS
- FINELY GROUND TO GIVE A STRAIGHT CUTTING EDGE
- FITTED WITH PROTECTIVE HAND GRIP FOR SAFETY

- CORRECTLY HEAT TREATED TO BEST SUIT PRODUCT APPLICATION
- * WARNING WEAR SAFETY GOGGLES USER AND BYSTANDER

Part No.	Product Description	Pack Qty	Weight ea
5EB	ELECTRICIANS BOLSTER C/W PROTECTIVE GRIP	6	0.59kg

Plumbers Bolster



- USED FOR REMOVING TILES, CUTTING THROUGH CAVITY WALLS
- FORGED FROM ONE PIECE OF TOUGH HIGH TENSILE CARBON MANGANESE STEEL
- LONGER HANDLE ASSISTS WITH DIFFICULT AND HARD TO REACH JOBS
- HARDENED BLADE WILL ALSO CUT THROUGH BOLTS
- FINELY GROUND TO GIVE A STRAIGHT CUTTING EDGE

- CORRECTLY HEAT TREATED TO BEST SUIT PRODUCT APPLICATION
- * WARNING WEAR SAFETY GOGGLES USER AND BYSTANDER

Part No.	Product Description	Pack Qty	Weight ea
5PB	PLUMBERS BOLSTER	2	1.18kg



**Quality Forged Hand Tools
Unconditionally Guaranteed***

***"Correctly Hardened & Tempered
for Maximum Toughness"***

**Against Faulty Materials & Workmanship.*

Chisels

Alloy Cold Chisels - Premium



- USED FOR CUTTING HIGH TENSILE STEELS AND WELDS
- FORGED FROM CHROME ALLOY STEEL TO GIVE A HARDER BLADE WITH GREAT RESILIENCE
- BLADE WILL NOT SHATTER
- SOFTER HEAD IS DESIGNED TO MUSHROOM, NOT CHIP
- ACCURATELY GROUND TO THE OPTIMUM 60° ANGLE FOR CUTTING

- CORRECTLY HEAT TREATED TO BEST SUIT PRODUCT APPLICATION
- * WARNING WEAR SAFETY GOGGLES USER AND BYSTANDER

Part No.	Product Description	Pack Qty	Weight ea
5AC15013	150x13mm ALLOY COLD CHISEL	5	0.10kg
5AC17516	175x16mm ALLOY COLD CHISEL	5	0.20kg
5AC20020	200x20mm ALLOY COLD CHISEL	5	0.28kg
5AC23022	230x22mm ALLOY COLD CHISEL	5	0.50kg
5AC25025	250x25mm ALLOY COLD CHISEL	5	0.68kg

Set

Part No.	Product Description	Pack Qty	Weight ea
5ACSET5	13,16,20,22 & 25mm ALLOY COLD CHISELS - SET OF 5	2	1.82kg

Alloy Engineers Chisels - Cross Cut (Cape)



- USED FOR REMOVING OIL SEALS
- ALSO USED FOR CUTTING IN CORNERS AND DIFFICULT & CONFINED AREAS
- FORGED FROM CHROME ALLOY STEEL TO GIVE A HARDER BLADE WITH GREAT RESILIENCE
- CORRECTLY HARDENED AND TEMPERED SO BLADE WILL NOT SHATTER WHEN STRUCK HARD
- ACCURATELY GROUND TO THE OPTIMUM ANGLE FOR CUTTING

- CORRECTLY HEAT TREATED TO BEST SUIT PRODUCT APPLICATION
- * WARNING EYE PROTECTION & GLOVES MUST BE WORN WHEN USING THIS PRODUCT

Part No.	Product Description	Pack Qty	Weight ea
----------	---------------------	----------	-----------

The following products are manufactured to order and have a minimum order qty (can include multiple sizes) and lead time.

7CHC15013	150x13x6.5mm ALLOY CROSS CUT CHISEL	Min Buy 20	5	0.12kg
7CHC17516	175x16x8mm ALLOY CROSS CUT CHISEL	Min Buy 20	5	0.23kg
7CHC20020	200x20x10mm ALLOY CROSS CUT CHISEL	Min Buy 20	5	0.25kg
7CHC22522	225x22x11mm ALLOY CROSS CUT CHISEL	Min Buy 20	5	0.62kg
7CHC25025	250x25x13mm ALLOY CROSS CUT CHISEL	Min Buy 20	5	0.91kg



**Quality Forged Hand Tools
Unconditionally Guaranteed***

**"Correctly Hardened & Tempered
for Maximum Toughness"**

**Against Faulty Materials & Workmanship.*

Chisels

Alloy Engineers Chisels - Diamond Point



- USED FOR CUTTING OILWAYS IN PLAIN BEARINGS
- ALSO USED FOR CUTTING IN CORNERS ETC.
- FORGED FROM CHROME ALLOY STEEL TO GIVE A HARDER BLADE WITH GREAT RESILIENCE
- CORRECTLY HARDENED AND TEMPERED BLADE WILL NOT SHATTER WHEN STRUCK HARD
- ACCURATELY GROUND TO THE OPTIMUM ANGLE FOR CUTTING
- CORRECTLY HEAT TREATED TO BEST SUIT PRODUCT APPLICATION
- * WARNING EYE PROTECTION & GLOVES MUST BE WORN WHEN USING THIS PRODUCT

Part No.	Product Description		Pack Qty	Weight ea
The following products are manufactured to order and have a minimum order qty (can include multiple sizes) and lead time.				
7CHD15013	150x13x6.5mm ALLOY DIAMOND POINT CHISEL	Min Buy 20	5	0.12kg
7CHD17516	175x16x8mm ALLOY DIAMOND POINT CHISEL	Min Buy 20	5	0.22kg
7CHD20020	200x20x10mm ALLOY DIAMOND POINT CHISEL	Min Buy 20	5	0.23kg
7CHD22522	225x22x11mm ALLOY DIAMOND POINT CHISEL	Min Buy 20	5	0.60kg
7CHD25025	250x25x13mm ALLOY DIAMOND POINT CHISEL	Min Buy 20	5	0.91kg

Alloy Engineers Chisels - Round Nose



- USED FOR CUTTING GROOVES FOR GREASEWAYS IN PLAIN BEARINGS
- ALSO USED FOR CUTTING IN CORNERS AND CONFINED AREAS
- FORGED FROM CHROME ALLOY STEEL TO GIVE A HARDER BLADE WITH GREAT RESILIENCE
- ACCURATELY GROUND TO OPTIMUM ANGLE FOR CUTTING
- CORRECTLY HARDENED AND TEMPERED, SO WILL NOT SHATTER WHEN STRUCK HARD
- CORRECTLY HEAT TREATED TO BEST SUIT PRODUCT APPLICATION
- * WARNING EYE PROTECTION & GLOVES MUST BE WORN WHEN USING THIS PRODUCT

Part No.	Product Description		Pack Qty	Weight ea
The following products are manufactured to order and have a minimum order qty (can include multiple sizes) and lead time.				
7CHR15013	150x13x6.5mm ALLOY ROUND NOSE CHISEL	Min Buy 20	5	0.12kg
7CHR17516	175x16x8mm ALLOY ROUND NOSE CHISEL	Min Buy 20	5	0.23kg
7CHR20020	200x20x10mm ALLOY ROUND NOSE CHISEL	Min Buy 20	5	0.25kg
7CHR22522	225x22x11mm ALLOY ROUND NOSE CHISEL	Min Buy 20	5	0.62kg
7CHR25025	250x25x13mm ALLOY ROUND NOSE CHISEL	Min Buy 20	5	0.91kg



**Quality Forged Hand Tools
Unconditionally Guaranteed***

***"Correctly Hardened & Tempered
for Maximum Toughness"***

**Against Faulty Materials & Workmanship.*

Chisels

Alloy Long Chisel - Premium



- USED FOR CUTTING IN HARD TO REACH PLACES, E.G. CAVITY WALLS
- ALSO USED TO CUT MASONRY, HIGH TENSILE STEELS AND WELDS
- FORGED FROM CHROME ALLOY STEEL TO GIVE A HARDER BLADE WITH GREAT RESILIENCE
- BLADE WILL NOT SHATTER & SOFTER HEAD IS DESIGNED TO MUSHROOM, NOT CHIP, FOR SAFETY
- ACCURATELY GROUND TO THE OPTIMUM 60° ANGLE FOR CUTTING
- CORRECTLY HEAT TREATED TO BEST SUIT PRODUCT APPLICATION
- * WARNING WEAR SAFETY GOGGLES USER AND BYSTANDER

Part No.	Product Description	Pack Qty	Weight ea
5CL30016	300x16mm ALLOY LONG CHISEL	3	0.25kg
5CL37520	375x20mm ALLOY LONG CHISEL	3	0.57kg
5CL45020	450x20mm ALLOY LONG CHISEL	3	0.68kg

Alloy Masonry Chisel - Premium



- USED FOR MASONRY AND RENOVATION WORK, STRIPPING TILES ETC.
- ALSO USED FOR OTHER GENERAL CUTTING
- FORGED FROM TOUGH CHROME ALLOY STEEL
- LONG FINELY TAPERED & GROUND BLADE, GROUND TO THE OPTIMUM 60° ANGLE FOR CUTTING
- HEAD IS NORMALIZED, DESIGNED TO MUSHROOM, NOT CHIP, FOR SAFETY
- CORRECTLY HEAT TREATED TO BEST SUIT PRODUCT APPLICATION
- * WARNING WEAR SAFETY GOGGLES USER AND BYSTANDER

Part No.	Product Description	Pack Qty	Weight ea
5CM25025	250x25mm ALLOY MASONRY CHISEL	3	0.57kg
5CM25032	250x32mm ALLOY MASONRY CHISEL	3	0.58kg
5CM25038	250x38mm ALLOY MASONRY CHISEL	3	0.59kg
5CM25050	250x50mm ALLOY MASONRY CHISEL	3	0.62kg

Pack

Part No.	Product Description	Pack Qty	Weight ea
5CMP25025	250x25mm ALLOY MASONRY CHISEL - HANG PACK	3	0.58kg
5CMP25032	250x32mm ALLOY MASONRY CHISEL - HANG PACK	3	0.59kg
5CMP25038	250x38mm ALLOY MASONRY CHISEL - HANG PACK	3	0.60kg
5CMP25050	250x50mm ALLOY MASONRY CHISEL - HANG PACK	3	0.63kg



**Quality Forged Hand Tools
Unconditionally Guaranteed***

**"Correctly Hardened & Tempered
for Maximum Toughness"**

**Against Faulty Materials & Workmanship.*

Chisels

Chisel Bars



- USED WITH HEAVY HAMMER FOR MASONRY AND DEMOLITION WORK
- FORGED FROM TOUGH HIGH TENSILE CARBON MANGANESE STEEL
- BLADE CORRECTLY HARDENED & TEMPERED SO THAT IT WILL NOT SHATTER WHEN DRIVEN HARD
- THE HEAD IS LEFT SOFTER TO MUSHROOM, NOT CHIP, FOR SAFETY
- GROUND & SHARPENED LONG TAPERED BLADE FOR BETTER PERFORMANCE

- CORRECTLY HEAT TREATED TO BEST SUIT PRODUCT APPLICATION
- * WARNING WEAR SAFETY GOGGLES USER AND BYSTANDER

Part No.	Product Description	Pack Qty	Weight ea
5CCB30025	300x25mm CHISEL BAR	3	1.00kg
5CCB37525	375x25mm CHISEL BAR	3	1.33kg
5CCB45025	450x25mm CHISEL BAR	3	1.67kg



12/07/2010

**Quality Forged Hand Tools
Unconditionally Guaranteed***

***"Correctly Hardened & Tempered
for Maximum Toughness"***

**Against Faulty Materials & Workmanship.*

Chisels

Cold Chisels



- USED FOR GENERAL CUTTING INC. MILD STEEL, BOLTS & CONCRETE
- FORGED FROM TOUGH HIGH TENSILE CARBON MANGANESE STEEL
- BLADE CORRECTLY HARDENED & TEMPERED SO THAT IT WILL NOT SHATTER
- THE HEAD IS LEFT SOFTER TO MUSHROOM, NOT CHIP, FOR SAFETY
- CUTTING EDGE GROUND TO THE OPTIMUM ANGLE FOR BEST PERFORMANCE & DURABILITY

- CORRECTLY HEAT TREATED TO BEST SUIT PRODUCT APPLICATION
- * WARNING WEAR SAFETY GOGGLES USER AND BYSTANDER

Part No.	Product Description	Pack Qty	Weight ea
5CC15006	150x6mm COLD CHISEL	5	0.03kg
5CC15010	150x10mm COLD CHISEL	5	0.08kg
5CC15013	150x13mm COLD CHISEL	5	0.14kg
5CC17516	175x16mm COLD CHISEL	5	0.20kg
5CC20020	200x20mm COLD CHISEL	5	0.32kg
5CC23022	230x22mm COLD CHISEL	5	0.57kg
5CC25025	250x25mm COLD CHISEL	5	0.62kg

The following products are manufactured to order and have a minimum order qty (can include multiple sizes) and lead time.

7CC30032	300x32mm COLD CHISEL - HEXAGON	Min Buy 20	5	1.19kg
----------	--------------------------------	------------	---	--------

Pack

Part No.	Product Description	Pack Qty	Weight ea
5CCPP15010	150x10mm COLD CHISEL - HANG PACK	3	0.09kg
5CCPP15013	150x13mm COLD CHISEL - HANG PACK	3	0.15kg
5CCPP17516	175x16mm COLD CHISEL - HANG PACK	3	0.20kg
5CCPP20020	200x20mm COLD CHISEL - HANG PACK	3	0.33kg
5CCPP23022	230x22mm COLD CHISEL - HANG PACK	3	0.58kg
5CCPP25025	250x25mm COLD CHISEL - HANG PACK	3	0.63kg

Set

Part No.	Product Description	Pack Qty	Weight ea
5CCSET5	13,16,20,22 & 25mm COLD CHISELS - SET OF 5	2	1.90kg



**Quality Forged Hand Tools
Unconditionally Guaranteed***

***"Correctly Hardened & Tempered
for Maximum Toughness"***

**Against Faulty Materials & Workmanship.*

Chisels

Plugging Chisels



- USED FOR CUTTING MORTAR JOINTS
- FORGED FROM TOUGH HIGH TENSILE CARBON MANGANESE STEEL
- REVERSE TAPERED BLADE TO AVOID JAMMING
- ACCURATELY GROUND AND SHARPENED CUTTING EDGE

- CORRECTLY HEAT TREATED TO BEST SUIT PRODUCT APPLICATION
- * WARNING WEAR SAFETY GOGGLES USER AND BYSTANDER

Part No.	Product Description	Pack Qty	Weight ea
5PC	16mm PLUGGING CHISEL 7mm BLADE	3	0.33kg

Pack

Part No.	Product Description	Pack Qty	Weight ea
5PCPP	PLUGGING CHISEL 7mm - HANG PACK	3	0.35kg

Cold Sets

Cold Sets



- USED FOR STRIKING WITH SLEDGE HAMMER
- FORGED FROM TOUGH HIGH TENSILE CARBON MANGANESE STEEL
- CORRECTLY HARDENED AND TEMPERED SO BLADE WILL NOT SHATTER WHEN STRUCK HARD
- THE HEAD IS LEFT SOFTER TO MUSHROOM, NOT CHIP, FOR SAFETY

- CORRECTLY HEAT TREATED TO BEST SUIT PRODUCT APPLICATION
- * WARNING EYE PROTECTION & GLOVES MUST BE WORN WHEN USING THIS PRODUCT

Part No.	Product Description	Pack Qty	Weight ea
----------	---------------------	----------	-----------

The following products are manufactured to order and have a minimum order qty (can include multiple sizes) and lead time.

7SCSH225	225mm COLD SET STEEL HANDLED	Min Buy 4	4	1.75kg
----------	------------------------------	-----------	---	--------



12/07/2010

**Quality Forged Hand Tools
Unconditionally Guaranteed***

***"Correctly Hardened & Tempered
for Maximum Toughness"***

**Against Faulty Materials & Workmanship.*

Drill Sleeves

Drill Sleeves



- USED FOR ADAPTING MORSE TAPER DRILLS TO FIT LARGER MACHINES
- TURNED FROM STEEL
- PRECISION MADE TO EXACTING STANDARDS
- HARDENED & GROUND FOR LONG LIFE AND DURABILITY
- MADE IN SIZES 1-2 TO 5-6

- CORRECTLY HEAT TREATED TO BEST SUIT PRODUCT APPLICATION
- * WARNING WEAR SAFETY GOGGLES USER AND BYSTANDER

Part No.	Product Description	Pack Qty	Weight ea
5XD12	1-2 MORSE TAPER DRILL SLEEVE - HARDENED & GROUND	3	0.11kg
5XD23	2-3 MORSE TAPER DRILL SLEEVE - HARDENED & GROUND	3	0.18kg
5XD34	3-4 MORSE TAPER DRILL SLEEVE - HARDENED & GROUND	3	0.40kg
5XD45	4-5 MORSE TAPER DRILL SLEEVE - HARDENED & GROUND	3	1.04kg
5XD56	5-6 MORSE TAPER DRILL SLEEVE - HARDENED & GROUND	2	2.66kg

Fencing

Star Dropper Hammer



- USED FOR DRIVING IN STAR (FENCING) DROPPERS
- ALSO USED TO DRIVE IN MARKER PEGS, STAKES, CONCRETING STAKES ETC.
- FORGED FROM TOUGH HIGH TENSILE CARBON MANGANESE STEEL
- HEAVY 8KG UNIT DRIVES DROPPERS VERY QUICKLY AND EFFICIENTLY
- SOLID STEEL HANDLES & SLUG WELDED TOGETHER (NOT TO PIPE) GIVES GREAT STRENGTH

- CORRECTLY HEAT TREATED TO BEST SUIT PRODUCT APPLICATION
- * WARNING WEAR SAFETY GOGGLES USER AND BYSTANDER

Part No.	Product Description	Pack Qty	Weight ea
5SDSH	8kg STAR DROPPER HAMMER	2	8.68kg

Star Dropper Remover



- USED FOR REMOVING STAR DROPPERS (ALSO CALLED STAR PICKETS OR FENCING DROPPERS)
- ALSO USED FOR REMOVING SELECTED PIPES AND STEEL PEGS
- MADE FROM HIGH TENSILE STEEL FOR DURABILITY AND LONG LIFE
- GRIPPER BITES EFFICIENTLY INTO DROPPER FOR EASY EXTRACTION
- LONG HANDLE FOR EXCELLENT LEVERAGE

- CORRECTLY HEAT TREATED TO BEST SUIT PRODUCT APPLICATION
- * WARNING WEAR SAFETY GOGGLES USER AND BYSTANDER

Part No.	Product Description	Pack Qty	Weight ea
5SDR	STAR DROPPER REMOVER	2	8.06kg



**Quality Forged Hand Tools
Unconditionally Guaranteed***

**"Correctly Hardened & Tempered
for Maximum Toughness"**

**Against Faulty Materials & Workmanship.*

G-Clamps

G-Clamps - Bar Type



- USED FOR CLAMPING MATERIALS IN WOOD OR METALWORK
- DROP FORGED FROM HIGH TENSILE STEEL FOR HIGH STRENGTH WITHOUT BREAKING
- 200mm TESTED TO OVER 3 TONNE PRESSURE WITH NO DEFORMATION
- CLAMP HAS DEEP THROAT FOR FLEXIBILITY AND MACHINED CLAMPING FACE
- UNC THREAD WITH CLOSE TOLERANCE TO GIVE TIGHT CLAMPING PRESSURE

- CORRECTLY HEAT TREATED TO BEST SUIT PRODUCT APPLICATION
- * WARNING WEAR SAFETY GOGGLES USER AND BYSTANDER

Part No.	Product Description	Pack Qty	Weight ea
5GCB100	100mm INDUSTRIAL BAR TYPE G-CLAMP	2	1.62kg
5GCB150	150mm INDUSTRIAL BAR TYPE G-CLAMP	2	2.45kg
5GCB200	200mm INDUSTRIAL BAR TYPE G-CLAMP	2	3.40kg

G-Clamps - Hex Head



- USED FOR CLAMPING WOOD OR METALWORK MATERIALS IN CONFINED SPACES
- DROP FORGED FROM HIGH TENSILE STEEL FOR HIGH STRENGTH WITHOUT BREAKING
- 200mm TESTED TO OVER 3 TONNE PRESSURE WITH NO DEFORMATION
- CLAMP HAS DEEP THROAT FOR FLEXIBILITY, MACHINED CLAMPING FACE FOR EFFICIENTCY
- UNC THREAD WITH CLOSE TOLERANCE TO GIVE TIGHT CLAMPING PRESSURE

- CORRECTLY HEAT TREATED TO BEST SUIT PRODUCT APPLICATION
- * WARNING WEAR SAFETY GOGGLES USER AND BYSTANDER

Part No.	Product Description	Pack Qty	Weight ea
5GCS100	100mm INDUSTRIAL HEX HEAD G-CLAMP	2	1.52kg
5GCS150	150mm INDUSTRIAL HEX HEAD G-CLAMP	2	2.21kg

G-Clamps - Wing Type



- USED FOR CLAMPING WOOD OR METALWORK MATERIALS
- DROP FORGED FROM HIGH TENSILE STEEL FOR HIGH STRENGTH WITHOUT BREAKING
- 200mm TESTED TO OVER 3 TONNE PRESSURE WITH NO DEFORMATION
- CLAMP HAS DEEP THROAT FOR FLEXIBILITY, MACHINED CLAMPING FACE FOR EFFICIENT CLAMPING
- UNC THREAD WITH CLOSE TOLERANCE TO GIVE TIGHT CLAMPING PRESSURE

- CORRECTLY HEAT TREATED TO BEST SUIT PRODUCT APPLICATION
- * WARNING WEAR SAFETY GOGGLES USER AND BYSTANDER

Part No.	Product Description	Pack Qty	Weight ea
5GCW050	50mm INDUSTRIAL WING TYPE G-CLAMP	2	0.65kg
5GCW100	100mm INDUSTRIAL WING TYPE G-CLAMP	2	1.58kg
5GCW150	150mm INDUSTRIAL WING TYPE G-CLAMP	2	2.38kg
5GCW200	200mm INDUSTRIAL WING TYPE G-CLAMP	2	3.40kg



**Quality Forged Hand Tools
Unconditionally Guaranteed***

**"Correctly Hardened & Tempered
for Maximum Toughness"**

**Against Faulty Materials & Workmanship.*

Grips

Protective Grips



- USED TO PREVENTS INJURY FROM MIS-HITS
- MADE FROM NON-SLIP RUBBER COMPOUND
- GIVES COMFORTABLE GRIP ON TOOLS
- HELPS TO ABSORB SHOCK AND VIBRATION TO MINIMISE USER FATIGUE
- AVAILABLE ALSO TO SUIT 20mm SHAFT SIZE TOOLS

* WARNING EYE PROTECTION & GLOVES MUST BE WORN WHEN USING THIS PRODUCT

Part No.	Product Description	Pack Qty	Weight ea
The following products are manufactured to order and have a minimum order qty (can include multiple sizes) and lead time.			
7RPG16	RUBBER PROTECTIVE GRIP TO SUIT 16mm	Min Buy 12	12
7RPG20	RUBBER PROTECTIVE GRIP TO SUIT 20mm	Min Buy 12	12
			0.08kg
			0.09kg



**Quality Forged Hand Tools
Unconditionally Guaranteed***

***"Correctly Hardened & Tempered
for Maximum Toughness"***

**Against Faulty Materials & Workmanship.*

Hammers

Brass Hammers - Fibreglass Rubber Grip Handled



- USED IN NON-SPARKING ENVIRONMENTS OR TO AVOID DAMAGE TO STRUCK OBJECTS
- HEAD FORGED FROM BRASS FOR SOFTER NON-DAMAGING BLOW
- COMFORTABLE THICK RUBBER GRIP HANDLE FOR BETTER PROTECTION FROM SHOCK AND VIBRATION
- HANDLE INCLUDES BOTH OVERSTRIKE PROTECTION AND LARGE SWEEP AT BASE TO PREVENT LOSS OF GRIP
- THIS PRODUCT MUST BE MAINTAINED IN ACCORDANCE WITH AUSTRALIAN STANDARD AS3797:1991

- CORRECTLY HEAT TREATED TO BEST SUIT PRODUCT APPLICATION
- * WARNING - WEAR SAFETY GOGGLES. STRIKE SQUARELY - AVOID GLANCING BLOWS. THIS TOOL CAN BE MADE TO CHIP IF STRUCK AGAINST ANOTHER TOOL OR OTHER HARD OBJECT, RESULTING IN POSSIBLE EYE OR OTHER INJURY.

Part No.	Product Description		Pack Qty	Weight ea
The following products are manufactured to order and have a minimum order qty (can include multiple sizes) and lead time.				
7HBFRH04	4lb BRASS HAMMER C/W PINNED F/GLASS R/G HANDLE	Min Buy 2	2	2.22kg
7HBFRH07	7lb BRASS HAMMER C/W PINNED F/GLASS R/G HANDLE	Min Buy 2	4	4.01kg
7HBFRH14	14lb BRASS HAMMER C/W PINNED F/GLASS R/G HANDLE	Min Buy 2	2	6.78kg

Club Hammer - Wooden Handled



- USED FOR GENERAL BUILDING AND CONSTRUCTION WORK
- FORGED FROM TOUGH HIGH TENSILE CARBON MANGANESE STEEL
- MADE TO ENGLISH PATTERN WITH A TOUGH HICKORY HANDLE

- CORRECTLY HEAT TREATED TO BEST SUIT PRODUCT APPLICATION
- * WARNING WEAR SAFETY GOGGLES USER AND BYSTANDER

Part No.	Product Description		Pack Qty	Weight ea
5HCEN	3lb ENGLISH CLUB HAMMER		2	1.59kg



**Quality Forged Hand Tools
Unconditionally Guaranteed***

***"Correctly Hardened & Tempered
for Maximum Toughness"***

**Against Faulty Materials & Workmanship.*

Hammers

Copper Hammers - Fibreglass Rubber Grip Handled



- NON-MARKING SOFT FACED HAMMER
- ALSO USED FOR HAMMERING IN NON-SPARKING ENVIRONMENT
- HEAD FORGED FROM PURE ELECTROLYTIC COPPER - CONTAINS NO OXYGEN SO UNLIKE CAST WILL NOT CHIP OR BREAK
- GIVES A DEAD BLOW - DOESN'T BOUNCE
- HEAD IS PINNED TO HANDLE AS WELL AS EPOXIED TO PREVENT HEAD COMING OFF
- COMFORTABLE THICK RUBBER GRIP FOR BETTER PROTECTION FROM SHOCK AND VIBRATION
- LARGE SWEEP AT BASE TO PREVENT LOSS OF GRIP
- THIS PRODUCT MUST BE MAINTAINED IN ACCORDANCE WITH AUSTRALIAN STANDARD AS3797:1991

- CORRECTLY HEAT TREATED TO BEST SUIT PRODUCT APPLICATION
- * WARNING - WEAR SAFETY GOGGLES. STRIKE SQUARELY - AVOID GLANCING BLOWS. THIS TOOL CAN BE MADE TO CHIP IF STRUCK AGAINST ANOTHER TOOL OR OTHER HARD OBJECT, RESULTING IN POSSIBLE EYE OR OTHER INJURY.

Part No.	Product Description		Pack Qty	Weight ea
The following products are manufactured to order and have a minimum order qty (can include multiple sizes) and lead time.				
7HCFRH04	4lb COPPER HAMMER C/W F/G R/G HANDLE	Min Buy 1	2	2.22kg
7HCFRH07	7lb COPPER HAMMER C/W PINNED F/G R/G HANDLE	Min Buy 1	4	4.00kg
7HCFRH14	14lb COPPER HAMMER C/W PINNED F/G R/G HANDLE	Min Buy 1	2	6.84kg
7HCFRH28	28lb COPPER HAMMER C/W PINNED 900mm F/G R/G HANDLE	Min Buy 1	2	13.27kg

Copper Hammers - Nulpa Fibreglass Handled



- NON-MARKING SOFT FACED HAMMER
- USED FOR HAMMERING IN NON-SPARKING ENVIRONMENT
- FORGED FROM PURE ELECTROLYTIC COPPER - CONTAINS NO OXYGEN SO UNLIKE CAST WILL NOT CHIP OR BREAK
- GIVES A DEAD BLOW - DOESN'T BOUNCE
- FITTED WITH A QUALITY U.S.A MADE NUPLA FIBREGLASS HANDLE
- THIS PRODUCT MUST BE MAINTAINED IN ACCORDANCE WITH AUSTRALIAN STANDARD AS3797:1991

- CORRECTLY HEAT TREATED TO BEST SUIT PRODUCT APPLICATION
- * WARNING EYE PROTECTION & GLOVES MUST BE WORN WHEN USING THIS PRODUCT

Part No.	Product Description		Pack Qty	Weight ea
The following products are manufactured to order and have a minimum order qty (can include multiple sizes) and lead time.				
6NHCFH14	14lb COPPER HAMMER C/W NUPLA F/GLASS HANDLE	Min Buy 2	2	7.34kg



**Quality Forged Hand Tools
Unconditionally Guaranteed***

**"Correctly Hardened & Tempered
for Maximum Toughness"**

**Against Faulty Materials & Workmanship.*

Hammers

Copper Hammers - Wooden Handled



- NON-MARKING SOFT FACED HAMMER
- FORGED FROM PURE ELECTROLYTIC COPPER
- CONTAINS NO OXYGEN SO UNLIKE CAST WILL NOT CHIP OR BREAK
- GIVES A DEAD BLOW - DOESN'T BOUNCE
- FITTED WITH TOUGH AUSTRALIAN SPOTTED GUM HARDWOOD HANDLE
- THIS PRODUCT MUST BE MAINTAINED IN ACCORDANCE WITH STANDARD AS3797:1991

- CORRECTLY HEAT TREATED TO BEST SUIT PRODUCT APPLICATION
- * WARNING WEAR SAFETY GOGGLES USER AND BYSTANDER

Part No.	Product Description	Pack Qty	Weight ea	
5HCH01	1lb COPPER HAMMER C/W WOODEN HANDLE	2	0.50kg	
5HCH02	2lb COPPER HAMMER C/W WOODEN HANDLE	2	1.14kg	
5HCH03	3lb COPPER HAMMER C/W WOODEN HANDLE	2	1.68kg	
5HCH04	4lb COPPER HAMMER C/W WOODEN HANDLE	2	2.13kg	
The following products are manufactured to order and have a minimum order qty (can include multiple sizes) and lead time.				
7HCH07	7lb COPPER SLEDGE HAMMER C/W WOODEN HANDLE	Min Buy 2	4	3.74kg
7HCH14	14lb COPPER SLEDGE HAMMER C/W WOODEN HANDLE	Min Buy 2	2	7.40kg

Normalized Hammers - Fibreglass Rubber Grip Handled



- A SOFT FACED SLEDGE HAMMER FOR HEAVY APPLICATIONS WHERE RISK OF CHIPPING NEEDS TO BE MINIMISED
- HEAD IS FORGED FROM HIGH TENSILE STEEL THEN NORMALISED TO GIVE A SOFTER FACE THAT IS LESS LIKELY TO CHIP
- HEAD IS PINNED TO HANDLE AS WELL AS EPOXIED TO PREVENT HEAD COMING OFF
- A THICK CORED FIBREGLASS HANDLE FOR EXTRA STRENGTH WITH A NON-SLIP OIL RESISTANT RUBBERISED COATING
- LARGE SWEEP AT BASE TO PREVENT GRIP LOSS
- COMFORTABLE THICK RUBBER GRIP GIVES BETTER PROTECTION FROM SHOCK AND VIBRATION
- THIS PRODUCT MUST BE MAINTAINED IN ACCORDANCE WITH AUSTRALIAN STANDARD AS3797:1991

- CORRECTLY HEAT TREATED TO BEST SUIT PRODUCT APPLICATION
- * WARNING - WEAR SAFETY GOGGLES. STRIKE SQUARELY - AVOID GLANCING BLOWS. THIS TOOL CAN BE MADE TO CHIP IF STRUCK AGAINST ANOTHER TOOL OR OTHER HARD OBJECT, RESULTING IN POSSIBLE EYE OR OTHER INJURY.

Part No.	Product Description	Pack Qty	Weight ea	
The following products are manufactured to order and have a minimum order qty (can include multiple sizes) and lead time.				
7HSNFRH04	4lb NORM HAMMER C/W PINNED F/GLASS R/G HNDL	Min Buy 4	2	2.09kg
7HSNFRH07	7lb NORM HAMMER C/W PINNED F/GLASS R/G HNDL	Min Buy 4	4	4.04kg
7HSNFRH10	10lb NORM HAMMER C/W PINNED F/GLASS R/G HNDL	Min Buy 4	4	5.55kg
7HSNFRH14	14lb NORM HAMMER C/W PINNED F/GLASS R/G HNDL	Min Buy 4	2	7.59kg



**Quality Forged Hand Tools
Unconditionally Guaranteed***

**"Correctly Hardened & Tempered
for Maximum Toughness"**

**Against Faulty Materials & Workmanship.*

Hammers

Normalized Hammers - Wooden Handled



- A SOFT FACED SLEDGE HAMMER FOR HEAVY APPLICATIONS WHERE RISK OF CHIPPING NEEDS TO BE MINIMISED
- HEAD IS FORGED FROM HIGH TENSILE STEEL THEN NORMALISED TO GIVE A SOFTER FACE THAT IS LESS LIKELY TO CHIP
- HEAD IS SECURED WITH WOODEN AND METAL WEDGES FOR ADDED SECURITY
- FITTED WITH TOUGH AUSTRALIAN SPOTTED GUM HARDWOOD HANDLE, OILED FOR LONG LIFE AND USER COMFORT
- EXTRA THICK SHOULDER TO PREVENT BREAKAGES FROM MIS-HITS
- THIS PRODUCT MUST BE MAINTAINED IN ACCORDANCE WITH AUSTRALIAN STANDARD AS3797:1991

- CORRECTLY HEAT TREATED TO BEST SUIT PRODUCT APPLICATION
- * WARNING - WEAR SAFETY GOGGLES. STRIKE SQUARELY - AVOID GLANCING BLOWS. THIS TOOL CAN BE MADE TO CHIP IF STRUCK AGAINST ANOTHER TOOL OR OTHER HARD OBJECT, RESULTING IN POSSIBLE EYE OR OTHER INJURY.

Part No.	Product Description	Pack Qty	Weight ea
The following products are manufactured to order and have a minimum order qty (can include multiple sizes) and lead time.			
7HSNH04	4lb NORM HAMMER C/W WOODEN HANDLE	Min Buy 4	2.14kg
7HSNH07	7lb NORM HAMMER C/W WOODEN HANDLE	Min Buy 4	3.74kg
7HSNH10	10lb NORM HAMMER C/W WOODEN HANDLE	Min Buy 4	5.60kg
7HSNH14	14lb NORM HAMMER C/W WOODEN HANDLE	Min Buy 4	7.40kg

Replacement Fibreglass Rubber Grip Handles



- USED IN PLACE OF WOODEN HANDLES FOR A NO-MAINTENANCE SOLUTION
- STRONG 27MM X 17MM FIBREGLASS CORE, MADE UP OF MILLIONS OF INDIVIDUAL STRANDS COMPRESSED TOGETHER IN A RESIN BOND TO GIVE HUGE STRENGTH
- COMFORTABLE THICK RUBBER GRIP GIVES BETTER PROTECTION FROM SHOCK AND VIBRATION
- LARGE SWEEP AT BASE TO PREVENT GRIP LOSS
- RUBBER IS OIL RESISTANT AND NON-SLIP EVEN WHEN WET
- SMOOTH UPPER SECTION TO ALLOW OTHER HAND TO SLIDE WHEN STRIKING

- * WARNING WEAR SAFETY GOGGLES USER AND BYSTANDER

Part No.	Product Description	Pack Qty	Weight ea
5HFR300	300mm FIBREGLASS RUBBER GRIP HANDLE	2	0.39kg
5HFR400	400mm FIBREGLASS RUBBER GRIP HANDLE	2	0.54kg
5HFR600	600mm FIBREGLASS RUBBER GRIP HANDLE	2	0.79kg
5HFR800	800mm FIBREGLASS RUBBER GRIP HANDLE	2	1.09kg
5HFR900	900mm FIBREGLASS RUBBER GRIP HANDLE	2	1.18kg



**Quality Forged Hand Tools
Unconditionally Guaranteed***

***"Correctly Hardened & Tempered
for Maximum Toughness"***

**Against Faulty Materials & Workmanship.*

Hammers

Scaling Hammer



- USED FOR DESCALING HEAVILY RUSTED PRODUCTS
- ALSO USED FOR REMOVAL OF SLAG FROM CASTINGS AND CLEANING CASTING DIES
- FORGED FROM TOUGH HIGH TENSILE CARBON MANGANESE STEEL
- BLADES FORMED AT RIGHT ANGLES FOR EASE OF USE
- COMFORTABLE THICK RUBBER GRIP FOR BETTER PROTECTION FROM SHOCK AND VIBRATION

- CORRECTLY HEAT TREATED TO BEST SUIT PRODUCT APPLICATION
- * WARNING EYE PROTECTION & GLOVES MUST BE WORN WHEN USING THIS PRODUCT

Part No.	Product Description	Pack Qty	Weight ea
The following products are manufactured to order and have a minimum order qty (can include multiple sizes) and lead time.			
7HSCH1.5	1-1/2lb SCALING HAMMER C/W F/GLASS R/GRIP HANDLE	Min Buy 20	10
			1.03kg

Sledge Hammers - Fibreglass Rubber Grip Handled



- A WELL BALANCED VERSATILE SLEDGE HAMMER FOR THE BUILDING AND CONSTRUCTION INDUSTRY
- FORGED FROM HIGH TENSILE STEEL WITH HARDENED AND TEMPERED FACES AND A RUBBER GRIP FIBREGLASS HANDLE
- HEAD IS PINNED TO HANDLE AS WELL AS EPOXIED TO PREVENT HEAD COMING OFF
- THICK HANDLE WITH LARGE SWEEP AT BASE TO PREVENT LOSS OF GRIP
- COMFORTABLE THICK RUBBER GRIP FOR BETTER PROTECTION FROM SHOCK AND VIBRATION
- THIS PRODUCT MUST BE MAINTAINED IN ACCORDANCE WITH AUSTRALIAN STANDARD AS3797:1991

- CORRECTLY HEAT TREATED TO BEST SUIT PRODUCT APPLICATION
- * WARNING WEAR SAFETY GOGGLES USER AND BYSTANDER

Part No.	Product Description	Pack Qty	Weight ea
5HDFRH04300	4lb DEMO HAMMER C/W PINNED F/GLASS R/G HNDL	2	2.20kg
5HDFRH04400	4lb DEMO HAMMER C/W PINNED F/GLASS R/G HNDL	2	2.32kg
5HSFRH07	7lb SLEDGE HAMMER C/W PINNED F/G R/G HANDLE	4	4.48kg
5HSFRH10	10lb SLEDGE HAMMER C/W PINNED F/G R/G HANDLE	4	5.55kg
5HSFRH14	14lb SLEDGE HAMMER C/W PINNED F/G R/G HANDLE	2	7.59kg
5HSFRH28	28lb SLEDGE HAMMER C/W PINNED F/G R/G HANDLE	2	14.21kg



**Quality Forged Hand Tools
Unconditionally Guaranteed***

**"Correctly Hardened & Tempered
for Maximum Toughness"**

**Against Faulty Materials & Workmanship.*

Hammers

Sledge Hammers - Wooden Handled



- A WELL BALANCED VERSATILE SLEDGE HAMMER FOR THE BUILDING AND CONSTRUCTION INDUSTRY
- FORGED FROM TOUGH HIGH TENSILE CARBON MANGANESE STEEL
- HARDENED AND TEMPERED FACES FOR INCREASED PRODUCT LIFE
- HEAD SECURED WITH WOODEN AND METAL WEDGES FOR ADDED SAFETY
- FITTED WITH TOUGH AUSTRALIAN SPOTTED GUM HARDWOOD HANDLE, OILED FOR LONG LIFE AND USER COMFORT
- EXTRA THICK SHOULDER TO PREVENT BREAKAGES FROM MIS-HITS
- THIS PRODUCT MUST BE MAINTAINED IN ACCORDANCE WITH AUSTRALIAN STANDARD AS3797:1991

- CORRECTLY HEAT TREATED TO BEST SUIT PRODUCT APPLICATION
- * WARNING - WEAR SAFETY GOGGLES. STRIKE SQUARELY - AVOID GLANCING BLOWS. THIS TOOL CAN BE MADE TO CHIP IF STRUCK AGAINST ANOTHER TOOL OR OTHER HARD OBJECT, RESULTING IN POSSIBLE EYE OR OTHER INJURY.

Part No.	Product Description	Pack Qty	Weight ea
5HSH04	4lb SLEDGE HAMMER C/W WOODEN HANDLE	4	2.14kg
5HSH07	7lb SLEDGE HAMMER C/W WOODEN HANDLE	4	3.74kg
5HSH08	8lb SLEDGE HAMMER C/W WOODEN HANDLE	4	4.15kg
5HSH10	10lb SLEDGE HAMMER C/W WOODEN HANDLE	4	5.60kg
5HSH14	14lb SLEDGE HAMMER C/W WOODEN HANDLE	2	7.40kg

Welding Hammers



- USED FOR CHIPPING OFF SLAG AND SPATTER AROUND WELDS
- ALSO USED AS GEOLOGIST'S OR MINER'S TOOL
- HEAD FORGED FROM CHROME ALLOY STEEL
- EXCELLENT BALANCE, WITH HARDENED ENDS THAT DO NOT FLATTEN WHEN CHIPPING

- CORRECTLY HEAT TREATED TO BEST SUIT PRODUCT APPLICATION
- * WARNING WEAR SAFETY GOGGLES USER AND BYSTANDER

Part No.	Product Description	Pack Qty	Weight ea
5WHRG	WELDING HAMMER ALLOY HEAD C/W RUBBER GRIP	3	0.52kg
5WHSP	WELDING HAMMER ALLOY HEAD C/W SPRING GRIP	3	0.45kg



**Quality Forged Hand Tools
Unconditionally Guaranteed***

***"Correctly Hardened & Tempered
for Maximum Toughness"***

**Against Faulty Materials & Workmanship.*

Handles

File Handles



- USED TO HANDLE FILES AND OTHER SUITABLE TOOLS
- PRE-DRILLED WOODEN HANDLE WITH METAL COLLAR
- FITS TO HANDLE BY PLACING TANG OF FILE IN THE HOLE & TAPPING LIGHTLY ON BENCH UNTIL TIGHT
- SOFTWOOD TIMBER WILL ABSORB SWEAT & OIL WHEN USING
- AVAILABLE IN 75, 100, 125 AND 150mm SIZES AS WELL AS PACKS OF 2

* WARNING WEAR SAFETY GOGGLES USER AND BYSTANDER

Part No.	Product Description		Pack Qty	Weight ea
5FH075	75mm FILE HANDLE	Min Buy 100	100	0.02kg
5FH100	100mm FILE HANDLE	Min Buy 100	100	0.03kg
5FH125	125mm FILE HANDLE	Min Buy 100	100	0.04kg
5FH150	150mm FILE HANDLE	Min Buy 100	100	0.05kg

Pack

Part No.	Product Description		Pack Qty	Weight ea
5FHPP075	75mm FILE HANDLE PACK OF 2		6	0.04kg
5FHPP100	100mm FILE HANDLE PACK OF 2		6	0.05kg
5FHPP125	125mm FILE HANDLE PACK OF 2		6	0.07kg
5FHPP150	150mm FILE HANDLE PACK OF 2		6	0.09kg



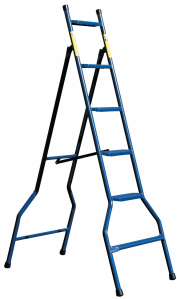
**Quality Forged Hand Tools
Unconditionally Guaranteed***

***"Correctly Hardened & Tempered
for Maximum Toughness"***

**Against Faulty Materials & Workmanship.*

Ladders & Trestles

Ladders - Industrial



- USED IN THE BUILDING AND CONSTRUCTION INDUSTRY
- ALSO USED IN MINES WHERE ALUMINIUM IS NOT ALLOWED (E.G. UNDERGROUND)
- FULLY WELDED ALL STEEL CONSTRUCTION
- EXTREMELY RIGID & STABLE, DOES NOT FLEX LIKE MANY ALUMINIUM LADDERS
- NO SLIP STEP DESIGN FOR SAFETY
- RATED TO 165 kg, UNIQUE DESIGN KEEPS CENTRE OF GRAVITY INSIDE BASE

Part No.	Product Description	Pack Qty	Weight ea
5LI1800	1800mm INDUSTRIAL STEP LADDER -TUBULAR STEEL 165kg	2	13.39kg
5LI2100	2100mm INDUSTRIAL STEP LADDER -TUBULAR STEEL 165kg	2	15.23kg
5LI2400	2400mm INDUSTRIAL STEP LADDER -TUBULAR STEEL 165kg	2	18.00kg
The following products are manufactured to order and have a minimum order qty (can include multiple sizes) and lead time.			
7LI3000	3000mm INDUSTRIAL STEP LADDER TUBULAR STEEL 165kg	Min Buy 2	2 30.00kg

Trestles - Aluminium Industrial



- USED IN THE BUILDING AND CONSTRUCTION INDUSTRY
- FULLY WELDED ALL ALUMINIUM CONSTRUCTION
- EXTREMELY RIGID & STABLE, DOES NOT FLEX LIKE MANY ALUMINIUM TRESTLES
- LIGHTWEIGHT YET STRONG ALTERNATIVE TO ALL-STEEL TRESTLE
- HEAVY DUTY LOAD RATING OF 150kg

Part No.	Product Description	Pack Qty	Weight ea
The following products are manufactured to order and have a minimum order qty (can include multiple sizes) and lead time.			
7TIA1200	1200mm IND. TRESTLE - TUBULAR ALUMINIUM 150kg	Min Buy 2	2 12.00kg
7TIA1800	1800mm IND. TRESTLE - TUBULAR ALUMINIUM 150kg	Min Buy 2	2 12.56kg
7TIA2400	2400mm IND. TRESTLE - TUBULAR ALUMINIUM 120kg	Min Buy 2	2 16.12kg
7TIA3000	3000mm INDUSTRIAL TRESTLE- TUBULAR ALUMINIUM 120kg	Min Buy 2	2 22.50kg



**Quality Forged Hand Tools
Unconditionally Guaranteed***

**"Correctly Hardened & Tempered
for Maximum Toughness"**

**Against Faulty Materials & Workmanship.*

Ladders & Trestles

Trestles - Tubular Steel Industrial



- USED IN THE BUILDING AND CONSTRUCTION INDUSTRY
- ALSO USED IN MINES WHERE ALUMINIUM IS NOT ALLOWED (E.G. UNDERGROUND)
- FULLY WELDED ALL STEEL CONSTRUCTION
- EXTREMELY RIGID & STABLE, DOES NOT FLEX LIKE MANY ALUMINIUM TRESTLES
- EXTRA HEAVY DUTY LOAD RATING OF 250kg

- CORRECTLY HEAT TREATED TO BEST SUIT PRODUCT APPLICATION
- * WARNING WEAR SAFETY GOGGLES USER AND BYSTANDER

Part No.	Product Description	Pack Qty	Weight ea
5TI1200	1200mm INDUSTRIAL TRESTLE - TUBULAR STEEL 250kg	2	11.92kg
5TI1800	1800mm INDUSTRIAL TRESTLE - TUBULAR STEEL 200kg	2	17.00kg
5TI2400	2400mm INDUSTRIAL TRESTLE - TUBULAR STEEL 150kg	2	22.50kg
5TI900	900mm INDUSTRIAL TRESTLE - TUBULAR STEEL 250kg	2	9.72kg

The following products are manufactured to order and have a minimum order qty (can include multiple sizes) and lead time.

7TI3000	3000mm INDUSTRIAL TRESTLE - TUBULAR STEEL 150kg	Min Buy 2	2	22.50kg
---------	---	-----------	---	---------



**Quality Forged Hand Tools
Unconditionally Guaranteed***

***"Correctly Hardened & Tempered
for Maximum Toughness"***

**Against Faulty Materials & Workmanship.*

Masonry

Dutch Pin



- PLASTERER'S TOOL FOR CLAMPING LEVEL BOARDS
- CAN ALSO BE DRIVEN INTO TIMBER POSTS FOR LEVELING
- FORGED FROM TOUGH HIGH TENSILE CARBON MANGANESE STEEL
- 125mm LONG SQUARE SHAFT FOR BETTER LOCKING CONTROL
- POINT IS HEAT TREATED FOR STRENGTH AND DURABILITY

- CORRECTLY HEAT TREATED TO BEST SUIT PRODUCT APPLICATION
- * WARNING WEAR SAFETY GOGGLES USER AND BYSTANDER

Part No.	Product Description	Pack Qty	Weight ea
5DP	DUTCH PIN	5	0.17kg

Masons Points



- USED FOR PLUMBING AND STONE MASONRY WORK
- FORGED FROM TOUGH HIGH TENSILE CARBON MANGANESE STEEL
- GREAT FOR CHIPPING CONCRETE & STONE IN DIFFICULT PLACES, E.G AROUND PIPES ETC.
- CAN BE ADVANTAGEOUS OVER CHISEL, ABLE TO PIN-POINT EXACT SPOT
- FINELY GROUND POINT AND CORRECTLY TREATED TO MINIMISE BREAKAGE

- CORRECTLY HEAT TREATED TO BEST SUIT PRODUCT APPLICATION
- * WARNING WEAR SAFETY GOGGLES USER AND BYSTANDER

Part No.	Product Description	Pack Qty	Weight ea
5MP25020	250x20mm MASONS POINT	3	0.58kg
5MP30020	300x20mm MASONS POINT	3	0.72kg
5MP40020	400x20mm MASONS POINT	3	0.99kg

Scutch Comb Holders



- USED FOR CLEANING, SHAPING AND CHASING MASONRY, INC. STONE AND PLASTER
- LARGE HEAD FORGED WITH SUFFICIENT MATERIAL TO SUPPORT COMB FOR ADDED STRENGTH
- SUPPLIED WITH HARDENED ENGLISH-MADE REPLACEABLE COMB
- MACHINED SLOT FOR ACCURATE BLADE FITTING
- GREAT FOR RENOVATION, REMOVING CEMENT TO REPLACE TILES, CLEANING BRICKS ETC.

- CORRECTLY HEAT TREATED TO BEST SUIT PRODUCT APPLICATION
- * WARNING WEAR SAFETY GOGGLES USER AND BYSTANDER

Part No.	Product Description	Pack Qty	Weight ea
5SHWC25	25mm SCUTCH HOLDER C/W COMB	2	0.54kg
5SHWC38	38mm SCUTCH HOLDER C/W COMB	2	0.60kg
5SHWC50	50mm SCUTCH HOLDER C/W COMB	2	0.70kg



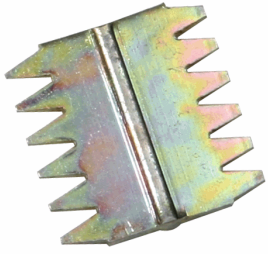
**Quality Forged Hand Tools
Unconditionally Guaranteed***

**"Correctly Hardened & Tempered
for Maximum Toughness"**

**Against Faulty Materials & Workmanship.*

Masonry

Scutch Combs



- USED WITH HOLDER FOR CLEANING, SHAPING AND CHASING MASONRY, INC. STONE & PLASTER
- MADE FROM HIGH TENSILE STEEL, HARDENED AND TEMPERED FOR STRENGTH AND DURABILITY
- QUALITY ENGLISH PRODUCT MADE TO EXACTING STANDARDS
- PLATED TO PREVENT RUSTING
- DOUBLE-SIDED FOR DOUBLE LIFE

- CORRECTLY HEAT TREATED TO BEST SUIT PRODUCT APPLICATION
- * WARNING WEAR SAFETY GOGGLES USER AND BYSTANDER

Part No.	Product Description		Pack Qty	Weight ea
5SC25	25mm SCUTCH COMBS	Min Buy 20	20	0.01kg
5SC38	38mm SCUTCH COMBS	Min Buy 20	20	0.02kg
5SC50	50mm SCUTCH COMBS	Min Buy 20	20	0.03kg



12/07/2010

**Quality Forged Hand Tools
Unconditionally Guaranteed***

***"Correctly Hardened & Tempered
for Maximum Toughness"***

**Against Faulty Materials & Workmanship.*

Pegs

Concrete Pegs



- USED FOR PEGGING OUT FORMWORK FOR CONCRETING
- ALSO CAN BE USED FOR GENERAL GARDEN AND LANDSCAPING APPLICATIONS
- MADE FROM TOUGH ALLOY STEEL TO RESIST BENDING
- CHAMFERED HEAD FOR SAFETY WITH A SHARPENED FORGED POINT FOR EASY USE
- AVAILABLE IN MANY SIZES OR ANY SIZE TO ORDER
- CORRECTLY HEAT TREATED TO BEST SUIT PRODUCT APPLICATION
- * WARNING EYE PROTECTION & GLOVES MUST BE WORN WHEN USING THIS PRODUCT

Part No.	Product Description	Pack Qty	Weight ea
The following products are manufactured to order and have a minimum order qty (can include multiple sizes) and lead time.			
7CS120016	1200x16mm CONCRETE STAKE	Min Buy 100	1.87kg
7CS60016	600x16mm CONCRETE STAKE	Min Buy 100	0.94kg
7CS60022	600x22mm CONCRETE STAKE	Min Buy 20	1.85kg
7CS75016	750x16mm CONCRETE STAKE	Min Buy 100	1.17kg
7CS75022	750x22mm CONCRETE STAKE	Min Buy 20	2.31kg
7CS90016	900x16mm CONCRETE STAKE	Min Buy 100	1.40kg
7CS90022	900x22mm CONCRETE STAKE	Min Buy 20	2.77kg

Marquee Pegs



- USED FOR PEGGING OUT MARQUEES, TENTS ETC.
- FORGED FROM TOUGH HIGH TENSILE CARBON MANGANESE STEEL
- MADE TO RESIST BENDING FOR SAFETY
- SHARPENED FORGED POINT FOR EASE OF ENTRY
- FORGED HEAD WITH LIP TO MAKE HAMMERING AND REMOVAL EASY
- PRODUCED FROM 22MM STEEL FOR USE WITH 24MM PLATE HOLES
- CORRECTLY HEAT TREATED TO BEST SUIT PRODUCT APPLICATION
- * WARNING EYE PROTECTION & GLOVES MUST BE WORN WHEN USING THIS PRODUCT

Part No.	Product Description	Pack Qty	Weight ea
The following products are manufactured to order and have a minimum order qty (can include multiple sizes) and lead time.			
7MP80024	800x24mm MARQUEE PEG - ROUND	Min Buy 100	2.97kg



**Quality Forged Hand Tools
Unconditionally Guaranteed***

***"Correctly Hardened & Tempered
for Maximum Toughness"***

**Against Faulty Materials & Workmanship.*

Picks

Miners



- USED FOR MINERAL EXPLORATION, GEMSTONE FOSSICKING ETC.
- FORGED FROM TOUGH HIGH TENSILE CARBON MANGANESE STEEL
- GROUND & SHARPENED POINTS TO MINIMISE EFFORT
- CORRECTLY HEAT TREATED BLADES, SO WILL NOT BEND OR BREAK

- CORRECTLY HEAT TREATED TO BEST SUIT PRODUCT APPLICATION
- * WARNING EYE PROTECTION & GLOVES MUST BE WORN WHEN USING THIS PRODUCT

Part No.	Product Description	Pack Qty	Weight ea
The following products are manufactured to order and have a minimum order qty (can include multiple sizes) and lead time.			
7PPMP1.125	1.125kg DOUBLE END MINERS PICK	Min Buy 20	2 1.16kg

Picks - Mattock Cutter



- USED FOR DIGGING, BREAKING UP SOIL & CLAY, CUTTING ROOTS ETC.
- FORGED FROM TOUGH HIGH TENSILE CARBON MANGANESE STEEL
- BLADES CORRECTLY CURVED AND WEIGHTED MEANING LESS STRESS ON BACK & EASIER DIGGING
- GROUND & SHARPENED CUTTING EDGES TO MINIMISE EFFORT
- CORRECTLY HEAT TREATED BLADES, SO WILL NOT CHIP OR BEND

- CORRECTLY HEAT TREATED TO BEST SUIT PRODUCT APPLICATION
- * WARNING WEAR SAFETY GOGGLES USER AND BYSTANDER

Part No.	Product Description	Pack Qty	Weight ea
5PPMC	5lb MATTOCK CUTTER	2	2.03kg

Picks - Mattock Pick



- USED FOR DIGGING, BREAKING UP SOIL, CLAY ETC.
- FORGED FROM TOUGH HIGH TENSILE CARBON MANGANESE STEEL
- BLADES CORRECTLY CURVED AND WEIGHTED MEANING LESS STRESS ON BACK & EASIER DIGGING
- GROUND & SHARPENED CUTTING EDGE AND POINT TO MINIMISE EFFORT
- CORRECTLY HEAT TREATED BLADES, SO WILL NOT BEND OR BREAK

- CORRECTLY HEAT TREATED TO BEST SUIT PRODUCT APPLICATION
- * WARNING WEAR SAFETY GOGGLES USER AND BYSTANDER

Part No.	Product Description	Pack Qty	Weight ea
5PPMP	5lb MATTOCK PICK	2	1.89kg



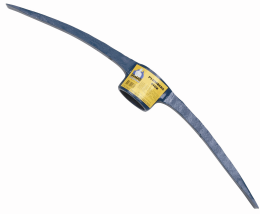
**Quality Forged Hand Tools
Unconditionally Guaranteed***

**"Correctly Hardened & Tempered
for Maximum Toughness"**

**Against Faulty Materials & Workmanship.*

Picks

Picks - Plumbers



- USED FOR DIGGING, BREAKING UP SOIL, CLAY ETC.
- FORGED FROM TOUGH HIGH TENSILE CARBON MANGANESE STEEL
- BLADES CORRECTLY CURVED AND WEIGHTED MEANING LESS STRESS ON BACK & EASIER DIGGING
- GROUND & SHARPENED CUTTING EDGES TO MINIMISE EFFORT
- CORRECTLY HEAT TREATED BLADES, SO WILL NOT BEND OR BREAK

- CORRECTLY HEAT TREATED TO BEST SUIT PRODUCT APPLICATION
- * WARNING WEAR SAFETY GOGGLES USER AND BYSTANDER

Part No.	Product Description	Pack Qty	Weight ea
5PP	6lb PLUMBERS PICK	2	2.45kg

Picks - Road Pick



- USED FOR ROADWORKS, DIGGING, BREAKING UP SOIL, CLAY, ASPHALT ETC.
- FORGED FROM TOUGH HIGH TENSILE CARBON MANGANESE STEEL
- BLADES CORRECTLY CURVED AND WEIGHTED MEANING LESS STRESS ON BACK & EASIER DIGGING
- GROUND & SHARPENED CUTTING EDGES TO MINIMISE EFFORT
- CORRECTLY HEAT TREATED BLADES, SO WILL NOT BEND OR BREAK

- CORRECTLY HEAT TREATED TO BEST SUIT PRODUCT APPLICATION
- * WARNING WEAR SAFETY GOGGLES USER AND BYSTANDER

Part No.	Product Description	Pack Qty	Weight ea
5PPRP	6lb ROAD PICK	2	2.66kg



**Quality Forged Hand Tools
Unconditionally Guaranteed***

***"Correctly Hardened & Tempered
for Maximum Toughness"***

**Against Faulty Materials & Workmanship.*

Plumbing

Gas Ballcock Keys

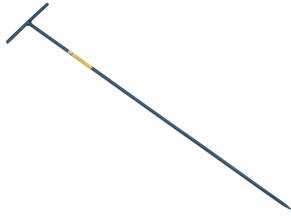


- USED FOR GAS MAINS BALLCOCK OPERATION
- FORGED FROM TOUGH HIGH TENSILE CARBON MANGANESE STEEL
- KEY END IS FORGED, NOT WELDED TO SHAFT FOR STRENGTH AND LONG LIFE
- LARGE "T" HANDLE FOR EASE OF USE
- FITTED WITH PLASTIC CAPS TO HANDLE

- CORRECTLY HEAT TREATED TO BEST SUIT PRODUCT APPLICATION
- * WARNING EYE PROTECTION & GLOVES MUST BE WORN WHEN USING THIS PRODUCT

Part No.	Product Description		Pack Qty	Weight ea
The following products are manufactured to order and have a minimum order qty (can include multiple sizes) and lead time.				
7GBK1200	1200mm GAS BALLCOCK KEY	Min Buy 20	5	1.60kg
7GBK600	600mm GAS BALLCOCK KEY	Min Buy 20	5	1.10kg

Plumbers Probe



- USED TO LOCATE PIPES AND STORMWATER DRAINS
- FORGED FROM TOUGH HIGH TENSILE CARBON MANGANESE STEEL
- POINT GROUND TO FINE EDGE FOR EASY PENETRATION OF SOIL
- T HANDLE FOR GOOD CONTROL

- CORRECTLY HEAT TREATED TO BEST SUIT PRODUCT APPLICATION
- * WARNING EYE PROTECTION & GLOVES MUST BE WORN WHEN USING THIS PRODUCT

Part No.	Product Description		Pack Qty	Weight ea
The following products are manufactured to order and have a minimum order qty (can include multiple sizes) and lead time.				
7PP1200	1200mm PLUMBERS PROBE	Min Buy 20	5	1.29kg

Water Turncock Keys



- USED FOR MAINS WATER TURNCOCK OPERATION
- PARTICULARLY GOOD WHERE ACCESS IS DIFFICULT
- FORGED FROM TOUGH HIGH TENSILE CARBON MANGANESE STEEL
- FORGED AND TAPERED HEAD FOR GOOD FIT
- T HANDLE FOR EASE OF USE

- CORRECTLY HEAT TREATED TO BEST SUIT PRODUCT APPLICATION
- * WARNING EYE PROTECTION & GLOVES MUST BE WORN WHEN USING THIS PRODUCT

Part No.	Product Description		Pack Qty	Weight ea
The following products are manufactured to order and have a minimum order qty (can include multiple sizes) and lead time.				
7WTK1200	1200mm WATER TURNCOCK KEY	Min Buy 20	5	1.35kg
7WTK450	450mm WATER TURNCOCK KEY	Min Buy 20	5	0.68kg
7WTK600	600mm WATER TURNCOCK KEY	Min Buy 20	5	0.75kg
7WTK900	900mm WATER TURNCOCK KEY	Min Buy 20	5	1.05kg



**Quality Forged Hand Tools
Unconditionally Guaranteed***

***"Correctly Hardened & Tempered
for Maximum Toughness"***

**Against Faulty Materials & Workmanship.*

Punches

Brass Punches



- USED FOR DRIVING WHERE STEEL PUNCH COULD CAUSE DAMAGE, E.G. THREADS, SHAFTS
- MADE FROM SPECIALLY SELECTED BRASS, CORRECT COMPOSITION FOR PUNCH USE
- KNURLED SHAFT FOR GOOD GRIP

- CORRECTLY HEAT TREATED TO BEST SUIT PRODUCT APPLICATION
- * WARNING EYE PROTECTION & GLOVES MUST BE WORN WHEN USING THIS PRODUCT

Part No.	Product Description	Pack Qty	Weight ea
The following products are manufactured to order and have a minimum order qty (can include multiple sizes) and lead time.			
7BP29219	292x19mm BRASS PUNCH	Min Buy 12	0.70kg
7BP29225	292x25mm BRASS PUNCH	Min Buy 12	1.25kg
7BP29232	292x32mm BRASS PUNCH	Min Buy 12	1.96kg

Centre Punches



- FOR PUNCHING HEAVY DUTY MATERIALS, INC. STAINLESS STEEL, PRIOR TO DRILLING
- FORGED FROM TOUGH ALLOY STEEL
- LARGE BODY MAKES FOR EASIER STRIKING
- THICK POINT GIVES LARGER CENTRE DOT TO FIT WEB OF DRILL, TO MINIMISE DRILL RUN-OFF
- HEAT TREATED POINT FOR LONG LIFE AND RELIABILITY

- CORRECTLY HEAT TREATED TO BEST SUIT PRODUCT APPLICATION
- * WARNING WEAR SAFETY GOGGLES USER AND BYSTANDER

Part No.	Product Description	Pack Qty	Weight ea
5CP13816	138x16mm CENTRE PUNCH	5	0.18kg
5CP17520	175x20mm CENTRE PUNCH	5	0.36kg

Pack

Part No.	Product Description	Pack Qty	Weight ea
5CPPP13816	138x16mm CENTRE PUNCH - HANG PACK	3	0.19kg



**Quality Forged Hand Tools
Unconditionally Guaranteed***

**"Correctly Hardened & Tempered
for Maximum Toughness"**

**Against Faulty Materials & Workmanship.*

Punches

Flooring Punches



- USED FOR DRIVING NAILS BELOW THE SURFACE OF TIMBER PRIOR TO SANDING
- FORGED FROM TOUGH HIGH TENSILE CARBON MANGANESE STEEL
- ACCURATELY DRILLED 3mm CUP FOR ACCURATE PUNCHING
- TAPER FORGED FOR STRENGTH & SOFT HEAD WILL MUSHROOM NOT CHIP FOR SAFETY
- HEX PROFILE FOR BETTER CONTROL - WON'T ROLL AWAY

- CORRECTLY HEAT TREATED TO BEST SUIT PRODUCT APPLICATION
- * WARNING WEAR SAFETY GOGGLES USER AND BYSTANDER

Part No.	Product Description	Pack Qty	Weight ea
5NPH3	3mm FLOORING PUNCH	5	0.21kg

Pack

Part No.	Product Description	Pack Qty	Weight ea
5NPHPP3	3mm FLOORING PUNCH - HANG PACK	3	0.22kg

Roofing Punches



- USED FOR PUNCHING SHEET METAL PRIOR TO NAILING OR SCREWING
- ALSO USED AS AN AWL FOR TIMBER WORK
- FORGED FROM TOUGH HIGH TENSILE CARBON MANGANESE STEEL
- FINELY GROUND & SHARPENED POINT FOR ACCURATE WORK
- HEX PROFILE FOR BETTER CONTROL - WON'T ROLL AWAY

- CORRECTLY HEAT TREATED TO BEST SUIT PRODUCT APPLICATION
- * WARNING WEAR SAFETY GOGGLES USER AND BYSTANDER

Part No.	Product Description	Pack Qty	Weight ea
5RP	ROOFING PUNCH HEXAGON	3	0.22kg

Pack

Part No.	Product Description	Pack Qty	Weight ea
5RPPP	ROOFING PUNCH HEXAGON - HANG PACK	3	0.24kg



**Quality Forged Hand Tools
Unconditionally Guaranteed***

***"Correctly Hardened & Tempered
for Maximum Toughness"***

**Against Faulty Materials & Workmanship.*

Rakes

Bitumin Rake



- HEAVY DUTY RAKE USED FOR SPREADING HOT ASPHALT PRIOR TO ROLLING
- FORGED FROM TOUGH HIGH TENSILE CARBON MANGANESE STEEL
- LONG METAL SHANK FOR EXTENDED LIFE
- FITTED WITH TOUGH AUSTRALIAN SPOTTED GUM HARDWOOD HANDLE, OILED FOR LONG LIFE AND USER COMFORT
- LONG 1500mm HANDLE FOR EXCELLENT RAKING PERFORMANCE AND TO MAINTAIN SAFE DISTANCE FROM HOT ASPHALT
- CORRECTLY HEAT TREATED TO BEST SUIT PRODUCT APPLICATION
- * WARNING EYE PROTECTION & GLOVES MUST BE WORN WHEN USING THIS PRODUCT

Part No.	Product Description	Pack Qty	Weight ea
The following products are manufactured to order and have a minimum order qty (can include multiple sizes) and lead time.			
7RB16	16 TOOTH HOT BITUMEN RAKE	Min Buy 20 4	2.40kg

Landscapers Rake



- GENERAL PURPOSE RAKE USED FOR EVERYDAY GARDENING AND LANDSCAPING
- FORGED FROM TOUGH HIGH TENSILE CARBON MANGANESE STEEL
- FITTED WITH TOUGH AUSTRALIAN SPOTTED GUM HARDWOOD HANDLE, OILED FOR LONG LIFE AND USER COMFORT
- LONG 1500mm HANDLE FOR EXCELLENT RAKING PERFORMANCE
- CORRECTLY HEAT TREATED TO BEST SUIT PRODUCT APPLICATION
- * WARNING EYE PROTECTION & GLOVES MUST BE WORN WHEN USING THIS PRODUCT

Part No.	Product Description	Pack Qty	Weight ea
The following products are manufactured to order and have a minimum order qty (can include multiple sizes) and lead time.			
7RG16	16 TOOTH LANDSCAPERS RAKE	Min Buy 4 4	1.52kg



12/07/2010

**Quality Forged Hand Tools
Unconditionally Guaranteed***

***"Correctly Hardened & Tempered
for Maximum Toughness"***

**Against Faulty Materials & Workmanship.*

Scrapers

Floor Scraper Blades



- USED FOR GENERAL CLEANING AND SCRAPING, INC. CEMENT BOARDS
- MADE FROM 316 STAINLESS STEEL (FOOD, SURGICAL AND MARINE GRADE)
- DOUBLE SIDED FOR DOUBLE LIFE
- FOR USE WITH T-HANDLE FLOOR SCRAPER

* WARNING WEAR SAFETY GOGGLES USER AND BYSTANDER

Part No.	Product Description	Pack Qty	Weight ea
5SFB150	150mm 316 GRADE S/S BLADE FOR FLOOR SCRAPER	3	0.15kg
5SFB200	200mm 316 GRADE S/S BLADE FOR FLOOR SCRAPER	3	0.23kg
5SFB300	300mm 316 GRADE S/S BLADE FOR FLOOR SCRAPER	3	0.30kg

Floor Scrapers



- USED FOR GENERAL CLEANING AND SCRAPING, INC. CEMENT BOARDS
- BLADE MADE FROM 316 STAINLESS STEEL (FOOD, SURGICAL AND MARINE GRADE)
- EASILY REPLACEABLE PRESS FIT DOUBLE SIDED BLADE FOR DOUBLE LIFE
- TEE HANDLE FOR GOOD CONTROL AND EASE OF USE
- REPLACEMENT BLADES AVAILABLE

* WARNING WEAR SAFETY GOGGLES USER AND BYSTANDER

Part No.	Product Description	Pack Qty	Weight ea
5SF150	150mm T-HANDLE FLOOR SCRAPER C/W 316 S/S BLADE	3	1.62kg
5SF200	200mm T-HANDLE FLOOR SCRAPER C/W 316 S/S BLADE	3	1.75kg
5SF300	300mm T-HANDLE FLOOR SCRAPER C/W 316 S/S BLADE	3	2.06kg



**Quality Forged Hand Tools
Unconditionally Guaranteed***

***"Correctly Hardened & Tempered
for Maximum Toughness"***

**Against Faulty Materials & Workmanship.*

Shovels

Aluminium Shovel



- USED FOR SHOVELLING GRAIN, BARK AND LIGHT MATERIALS
- PRESSED FROM LIGHT BUT STRONG ALUMINIUM ALLOY
- LARGE CAPACITY BLADE, RIBBED FOR ADDED STRENGTH
- ERGONOMICALLY DESIGNED 'D' HANDLE FOR EASE OF USE AND COMFORT

- CORRECTLY HEAT TREATED TO BEST SUIT PRODUCT APPLICATION
- * WARNING WEAR SAFETY GOGGLES USER AND BYSTANDER

Part No.	Product Description	Pack Qty	Weight ea
5SHGD	ALUMINIUM GRAIN SHOVEL 'D' HANDLE	4	1.75kg

Plumbers Shovel - Wooden Handle



- POPULAR POINTED SHOVEL, USED FOR DIGGING IN GRAVELLY AND STONY SOIL
- BLADE FORGED FROM CHROME ALLOY STEEL
- TOUGH AND WEAR RESISTANT
- FITTED WITH TOUGH HARDWOOD HANDLE, OILED FOR LONG LIFE AND USER COMFORT

- CORRECTLY HEAT TREATED TO BEST SUIT PRODUCT APPLICATION
- * WARNING WEAR SAFETY GOGGLES USER AND BYSTANDER

Part No.	Product Description	Pack Qty	Weight ea
5SHPL	PLUMBERS SHOVEL C/W LONG WOODEN HANDLE	4	2.39kg

Post Hole Shovel - Nupla Fibreglass Handled



- USED FOR DIGGING TRENCHES AND HOLES
- FORGED BLADE, RIBBED FOR EXTRA STRENGTH
- FITTED WITH A QUALITY U.S.A MADE NUPLA FIBREGLASS HANDLE
- TREADED TOP FOR SAFETY
- GOOD HANDLE LENGTH FOR EXCELLENT LEVERAGE AND DIGGING PERFORMANCE

- CORRECTLY HEAT TREATED TO BEST SUIT PRODUCT APPLICATION
- * WARNING EYE PROTECTION & GLOVES MUST BE WORN WHEN USING THIS PRODUCT

Part No.	Product Description	Pack Qty	Weight ea
----------	---------------------	----------	-----------

The following products are manufactured to order and have a minimum order qty (can include multiple sizes) and lead time.

6NSHPH	POST HOLE SHOVEL C/W NUPLA F/GLASS HANDLE	Min Buy 4	4	2.16kg
--------	---	-----------	---	--------



12/07/2010

**Quality Forged Hand Tools
Unconditionally Guaranteed***

**"Correctly Hardened & Tempered
for Maximum Toughness"**

**Against Faulty Materials & Workmanship.*

Shovels

Post Hole Shovel - Wooden Handle



- USED FOR DIGGING TRENCHES AND HOLES
- BLADE FORGED FROM CHROME ALLOY STEEL, RIBBED FOR EXTRA STRENGTH
- TOUGH AND WEAR RESISTANT
- FITTED WITH TOUGH HARDWOOD HANDLE, OILED FOR LONG LIFE AND USER COMFORT
- TREADED TOP FOR SAFETY

- CORRECTLY HEAT TREATED TO BEST SUIT PRODUCT APPLICATION
- * WARNING WEAR SAFETY GOGGLES USER AND BYSTANDER

Part No.	Product Description	Pack Qty	Weight ea
5SHPH	POST HOLE SHOVEL C/W LONG WOODEN HANDLE	4	2.44kg

Spade - Wooden Handle



- STRAIGHT BLADED SPADE USED FOR SQUARING SIDES OF TRENCHES AND BEDS
- BLADE FORGED FROM CHROME ALLOY STEEL
- TOUGH AND WEAR RESISTANT
- FITTED WITH TOUGH HARDWOOD HANDLE, OILED FOR LONG LIFE AND USER COMFORT
- TREADED TOP FOR SAFETY

- CORRECTLY HEAT TREATED TO BEST SUIT PRODUCT APPLICATION
- * WARNING WEAR SAFETY GOGGLES USER AND BYSTANDER

Part No.	Product Description	Pack Qty	Weight ea
5SPL	SPADE C/W LONG WOODEN HANDLE	4	2.57kg

Square Mouth Shovel - Nupla Fibreglass Handled



- VERSATILE SHOVEL FOR LOADING & UNLOADING, MIXING CONCRETE ETC.
- FORGED BLADE FOR STRENGTH AND DURABILITY
- FITTED WITH A QUALITY U.S.A MADE NUPLA FIBREGLASS HANDLE
- LITTLE OR NO MAINTENANCE REQUIRED
- GOOD HANDLE LENGTH FOR EXCELLENT LEVERAGE AND SHOVELLING PERFORMANCE

- CORRECTLY HEAT TREATED TO BEST SUIT PRODUCT APPLICATION
- * WARNING EYE PROTECTION & GLOVES MUST BE WORN WHEN USING THIS PRODUCT

Part No.	Product Description	Pack Qty	Weight ea
----------	---------------------	----------	-----------

The following products are manufactured to order and have a minimum order qty (can include multiple sizes) and lead time.

6NSHSM	SQUARE MOUTH SHOVEL C/W NUPLA F/GLASS HNDL	Min Buy 4	4	2.45kg
--------	--	-----------	---	--------



**Quality Forged Hand Tools
Unconditionally Guaranteed***

**"Correctly Hardened & Tempered
for Maximum Toughness"**

**Against Faulty Materials & Workmanship.*

Shovels

Square Mouth Shovel - Wooden Handle



- GENERAL PURPOSE SHOVEL FOR LOADING & UNLOADING, MIXING CONCRETE ETC.
- BLADE FORGED FROM CHROME ALLOY STEEL
- TOUGH AND WEAR RESISTANT
- FITTED WITH TOUGH HARDWOOD HANDLE, OILED FOR LONG LIFE AND USER COMFORT

- CORRECTLY HEAT TREATED TO BEST SUIT PRODUCT APPLICATION
- * WARNING WEAR SAFETY GOGGLES USER AND BYSTANDER

Part No.	Product Description	Pack Qty	Weight ea
5SHSML	SQUARE MOUTH SHOVEL C/W WOODEN HANDLE	4	2.32kg

Soldering

Wooden Handled



- USED FOR SOLDERING SHEET METAL AND METAL PRODUCTS
- FORGED FROM PURE ELECTROLYTIC COPPER - CONTAINS NO OXYGEN SO UNLIKE CAST WILL NOT CHIP OR BREAK
- GROUND POINTS FOR EASIER TINNING
- ROD IS IMPRESSED AND COPPER HEAD FORGED ON IT
- POINT CAN BE REDRAWN OUT FOR EXTENDED LIFE BECAUSE OF ELECTROLYTIC COMPOSITION OF HEAD

- CORRECTLY HEAT TREATED TO BEST SUIT PRODUCT APPLICATION
- * WARNING EYE PROTECTION & GLOVES MUST BE WORN WHEN USING THIS PRODUCT

Part No.	Product Description	Pack Qty	Weight ea
----------	---------------------	----------	-----------

The following products are manufactured to order and have a minimum order qty (can include multiple sizes) and lead time.

7SIH08	8oz SOLDERING IRON HANDLED	Min Buy 20	5	0.00kg
7SIH12	12oz SOLDERING IRON HANDLED	Min Buy 20	5	0.00kg
7SIH16	16oz SOLDERING IRON HANDLED	Min Buy 20	5	0.00kg
7SIH20	20oz SOLDERING IRON HANDLED	Min Buy 20	5	0.65kg
7SIH24	24oz SOLDERING IRON HANDLED	Min Buy 20	5	0.70kg
7SIH32	32oz SOLDERING IRON HANDLED	Min Buy 20	5	0.00kg
7SIH40	40oz SOLDERING IRON HANDLED	Min Buy 20	5	0.00kg



**Quality Forged Hand Tools
Unconditionally Guaranteed***

**"Correctly Hardened & Tempered
for Maximum Toughness"**

**Against Faulty Materials & Workmanship.*

Tongs

Blacksmiths - Flat Nose



- USED FOR HOLDING HOT WORK, LOADING KILNS ETC.
- DESIGNED FOR BEST USE WITH FLAT MATERIAL
- FORGED FROM TOUGH HIGH TENSILE CARBON MANGANESE STEEL
- REINS WILL TAKE HEAVY PRESSURE WHEN GRIPPING WITHOUT BENDING
- TAPERED BEAK FOR EASIER PICK UP
- CORRECTLY HEAT TREATED TO BEST SUIT PRODUCT APPLICATION
- * WARNING EYE PROTECTION & GLOVES MUST BE WORN WHEN USING THIS PRODUCT

Part No.	Product Description		Pack Qty	Weight ea
The following products are manufactured to order and have a minimum order qty (can include multiple sizes) and lead time.				
7BTF350	350mm FLAT BLACKSMITH TONGS	Min Buy 4	4	1.06kg
7BTF450	450mm FLAT BLACKSMITHS TONGS	Min Buy 4	4	1.37kg
7BTF600	600mm FLAT BLACKSMITHS TONGS	Min Buy 4	4	1.42kg

Blacksmiths - Round Nose



- USED FOR HOLDING HOT WORK, LOADING KILNS ETC.
- DESIGNED FOR BEST USE WITH ROUND 13-20mm DIAMETER MATERIAL
- FORGED FROM TOUGH HIGH TENSILE CARBON MANGANESE STEEL
- REINS WILL TAKE HEAVY PRESSURE WHEN GRIPPING WITHOUT BENDING
- TAPERED BEAK FOR EASIER PICK UP
- CORRECTLY HEAT TREATED TO BEST SUIT PRODUCT APPLICATION
- * WARNING EYE PROTECTION & GLOVES MUST BE WORN WHEN USING THIS PRODUCT

Part No.	Product Description		Pack Qty	Weight ea
The following products are manufactured to order and have a minimum order qty (can include multiple sizes) and lead time.				
7BTR350	350mm ROUND BLACKSMITHS TONGS	Min Buy 4	4	0.98kg
7BTR450	450mm ROUND BLACKSMITHS TONGS	Min Buy 4	4	1.31kg
7BTR600	600mm ROUND BLACKSMITHS TONGS	Min Buy 4	4	1.64kg



**Quality Forged Hand Tools
Unconditionally Guaranteed***

***"Correctly Hardened & Tempered
for Maximum Toughness"***

**Against Faulty Materials & Workmanship.*

Tyre

Bead Breaker - Heavy Duty



- USED FOR BREAKING BEADS ON CAR AND TRUCK TYRES
- MADE FROM HIGH TENSILE STEEL WITH HEXAGON SHAFT FOR EXCELLENT CONTROL
- HANDLED FOR TWO PERSON USE
- WELL BALANCED HEAVY UNIT (11 kg) WITH THE WEIGHT WHERE NEEDED MOST - IN STRIKER
- HARDENED AND TEMPERED FOOT FOR DURABILITY AND TOUGHNESS
- GOOD LENGTH TO MINIMIZE BACK STRAIN

- CORRECTLY HEAT TREATED TO BEST SUIT PRODUCT APPLICATION
 * WARNING WEAR SAFETY GOGGLES USER AND BYSTANDER

Part No.	Product Description	Pack Qty	Weight ea
7BB124	124 HEAVY DUTY 11Kg BEAD BREAKER		11.00kg

Bead Breakers - Hand Chisel



- USED FOR BREAKING TYRE BEADS
- MADE FROM TOUGH HIGH TENSILE CARBON MANGANESE STEEL
- BLADE SHAPED TO GIVE GOOD PENETRATION OF BEAD
- GROUND END FREE OF BURRS TO MINIMIZE TYRE DAMAGE

- CORRECTLY HEAT TREATED TO BEST SUIT PRODUCT APPLICATION
 * WARNING EYE PROTECTION & GLOVES MUST BE WORN WHEN USING THIS PRODUCT

Part No.	Product Description	Pack Qty	Weight ea
7BB130	130 BEAD CHISEL 350mm	10	2.07kg

The following products are manufactured to order and have a minimum order qty (can include multiple sizes) and lead time.

Bead Breakers - Hand Offset



- USED FOR BREAKING BEADS ON CAR AND TRUCK TYRES
- MADE FROM TOUGH HIGH TENSILE CARBON MANGANESE STEEL
- PRECISION GROUND ENDS TO MINIMIZE TYRE DAMAGE
- BLADE SHAPED TO GIVE GOOD PENETRATION OF BEAD

- CORRECTLY HEAT TREATED TO BEST SUIT PRODUCT APPLICATION
 * WARNING EYE PROTECTION & GLOVES MUST BE WORN WHEN USING THIS PRODUCT

Part No.	Product Description	Pack Qty	Weight ea
7BB132	132 BEAD TOOL 400mm	10	0.98kg

The following products are manufactured to order and have a minimum order qty (can include multiple sizes) and lead time.



**Quality Forged Hand Tools
 Unconditionally Guaranteed***

**"Correctly Hardened & Tempered
 for Maximum Toughness"**

**Against Faulty Materials & Workmanship.*

Tyre

Bead Breakers - Slide Hammer

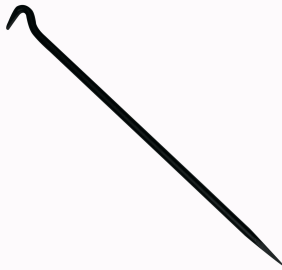


- USED FOR BREAKING BEADS ON CAR AND TRUCK TYRES
- MADE FROM HIGH TENSILE STEEL WITH HEXAGON SHAFT FOR EXCELLENT CONTROL
- WELL BALANCED HEAVY UNIT (7 kg) WITH THE WEIGHT WHERE NEEDED MOST - IN STRIKER
- HARDENED AND TEMPERED FOOT FOR DURABILITY AND TOUGHNESS
- GOOD LENGTH TO MINIMIZE BACK STRAIN

- CORRECTLY HEAT TREATED TO BEST SUIT PRODUCT APPLICATION
- * WARNING WEAR SAFETY GOGGLES USER AND BYSTANDER

Part No.	Product Description	Pack Qty	Weight ea
5BB122	122 BEAD BREAKER 7 kg SLIDE HAMMER	2	6.84kg

Cleat Bar



- USED FOR REMOVING RIMS FROM HUBS ON LARGE EARTHMOVING VEHICLES
- FORGED FROM TOUGH 4140 ALLOY STEEL
- HEAT TREATED FOR MAXIMUM TOUGHNESS
- FINELY GROUND ENDS FOR INCREASED PRODUCTIVITY

- CORRECTLY HEAT TREATED TO BEST SUIT PRODUCT APPLICATION
- * WARNING EYE PROTECTION & GLOVES MUST BE WORN WHEN USING THIS PRODUCT

Part No.	Product Description	Pack Qty	Weight ea
7CL900	900mm CLEAT BAR - 4140 GRADE	3	2.40kg

The following products are manufactured to order and have a minimum order qty (can include multiple sizes) and lead time.

Tyre Levers



- USED FOR REMOVAL AND FITTING OF 4WD, CAR AND TRUCK TYRES
- FORGED FROM TOUGH CHROME ALLOY STEEL
- CORRECTLY HARDENED AND TEMPERED TO BE TOUGH & RESILIENT
- FINE TAPERED & GROUND ENDS FOR EASIER USE AND PREVENTION OF DAMAGE TO TYRES

- CORRECTLY HEAT TREATED TO BEST SUIT PRODUCT APPLICATION
- * WARNING WEAR SAFETY GOGGLES USER AND BYSTANDER

Part No.	Product Description	Pack Qty	Weight ea
5TL600	600mm TYRE LEVER	3	1.14kg



**Quality Forged Hand Tools
Unconditionally Guaranteed***

**"Correctly Hardened & Tempered
for Maximum Toughness"**

**Against Faulty Materials & Workmanship.*

Tyre

Tyre Levers - Heavy Duty



- USED FOR REMOVAL AND FITTING OF 4WD, CAR AND TRUCK TYRES
- FORGED FROM TOUGH CHROME ALLOY STEEL
- CORRECTLY HARDENED AND TEMPERED TO BE TOUGH & RESILIENT
- FINE TAPERED & GROUND ENDS FOR EASIER USE AND PREVENTION OF DAMAGE TO TYRES

- CORRECTLY HEAT TREATED TO BEST SUIT PRODUCT APPLICATION
- * WARNING WEAR SAFETY GOGGLES USER AND BYSTANDER

Part No.	Product Description	Pack Qty	Weight ea
5TL600HD	600mm TYRE LEVER HEAVY DUTY	3	1.50kg

Tyre Levers - Tubeless Truck Fitting



- USED FOR REMOVAL (MTL1) & FITTING (MTL2) OF TUBELESS TRUCK TYRES
- DESIGNED FOR FUNCTION AND LONG LIFE
- FORGED FROM TOUGH ALLOY 4140 STEEL
- FINE TAPERED & GROUND ENDS TO ELIMINATE DAMAGE TO TYRE
- GOOD LENGTH FOR GREAT LEVERAGE

- CORRECTLY HEAT TREATED TO BEST SUIT PRODUCT APPLICATION
- * WARNING WEAR SAFETY GOGGLES USER AND BYSTANDER

Part No.	Product Description	Pack Qty	Weight ea
5MTL1	MTL1 STRAIGHT HALTE BAR - REMOVAL TYRE LEVER	3	2.35kg

Tyre Levers - Tubeless Truck Removal



- USED FOR FITTING (MTL2) & REMOVAL (MTL1) OF TUBELESS TRUCK TYRES
- DESIGNED FOR FUNCTION AND LONG LIFE
- FORGED FROM TOUGH ALLOY 4140 STEEL
- FINE TAPERED & GROUND ENDS TO ELIMINATE DAMAGE TO TYRE
- GOOD LENGTH FOR GREAT LEVERAGE

- CORRECTLY HEAT TREATED TO BEST SUIT PRODUCT APPLICATION
- * WARNING WEAR SAFETY GOGGLES USER AND BYSTANDER

Part No.	Product Description	Pack Qty	Weight ea
5MTL2	MTL2 CURVED FACE BAR - FITTING TYRE LEVER	3	2.34kg



**Quality Forged Hand Tools
Unconditionally Guaranteed***

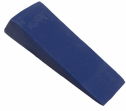
***"Correctly Hardened & Tempered
for Maximum Toughness"***

**Against Faulty Materials & Workmanship.*

Wedges

Fox Wedges

- USED FOR SPLITTING MATING SURFACES
- ALSO USED FOR PACKING MACHINERY AND STRUCTURES LEVEL BEFORE FIXING
- FORGED & GROUND BLADE WITH FINE EDGE FOR EASY ENTRY



- CORRECTLY HEAT TREATED TO BEST SUIT PRODUCT APPLICATION
- * WARNING WEAR SAFETY GOGGLES USER AND BYSTANDER

Part No.	Product Description	Pack Qty	Weight ea	
5FW07538	75x38x12mm FOX WEDGE	25	0.16kg	
5FW10025	100x25x8mm FOX WEDGE	25	0.10kg	
5FW17550	175x50x12mm FOX WEDGE	10	0.46kg	
The following products are manufactured to order and have a minimum order qty (can include multiple sizes) and lead time.				
7FW27050	270x50x25mm FOX WEDGES	Min Buy 30	10	1.83kg
7FWSS10025	100x25x8mm FOX WEDGE - STAINLESS STEEL	Min Buy 200	25	0.10kg



12/07/2010

**Quality Forged Hand Tools
Unconditionally Guaranteed***

***"Correctly Hardened & Tempered
for Maximum Toughness"***

**Against Faulty Materials & Workmanship.*