



## AIR TOOLS FOR STONE INDUSTRY

ISO-9001 certified  [www.gison.com.tw](http://www.gison.com.tw) Made in Taiwan 



## 1977

Changed business type from producing parts to Pneumatic tools.

First company who manufactured 1" Heavy Duty Impact Wrench in Taiwan.



## 1982

First company who manufactured Pneumatic Angle Sander in Taiwan.

## 1983

First company who manufactured Pneumatic Grinder in Taiwan.



## 1989

First company who manufactured Pneumatic Chipping Hammer in Taiwan.

## 1990

First company who manufactured Pneumatic Pavement Breaker in Taiwan.



## 2000

Developed and manufactured Pneumatic Wet Sanders / Polishers.

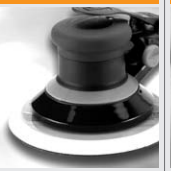
## 2003

First Company who developed and manufactured Wet Air Stone Router in Taiwan. Developed and manufactured Air Random Orbital Sander with revolutionary design-No Spanners needed.



## 2004

GPW-510 Wet Air Stone Router win The 2004 Taiwan Symbol of Excellence (SOE) and 11th (2004) Innovation Research Award.



## 2005

GPS-302 Air Random Orbital Sander win The 2005 Taiwan Symbol of Excellence (SOE).

## 2006

GPS-303 Air Random Orbital Sander win The 2006 Taiwan Symbol of Excellence (SOE).



1973

Preceding company was Lin Foundry, established Gison Machinery Co., Ltd. in Taichung, and manufactured gears for auto and pneumatic parts.

1992

Moved to Wu - Jih, Taichung County, re-newed production equipment and expanded production line.

1994

Install AutoCAD 2D drawing software.

1996

First Pneumatic Manufacturer who achieved ISO-9002 certification.

2001

First Company who developed and manufactured Pneumatic Profiling Machine for stone industry in Taiwan.

2011

Our new office, showroom and product's life testing room completed.

ISO-9001/2015  
certification



1985

Began to promote tools in GP brand in Taiwan.

1993

43 items passed GS-TÜV approval.

1995

According to European Market demand, accomplished Conformity of EC Declaration, Vibration and Sound Pressure testing for all items.

1997

SolidWorks 3D drawing software was introduced into R&D department.

2002

The first Pneumatic Manufacturer who achieved ISO-9001 / 2000 certification in Taiwan.

2017

ISO 9001:2015 certified.

2009

GPW-227  
Wet Air Cutting Saw.

2012

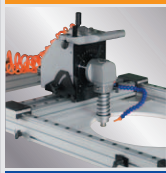
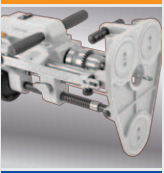
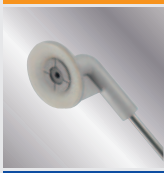
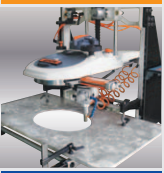
GPW-A04A  
Mitre Clamp form Marble,  
Granite, Stone.

2014

New Products integrate new vacuum suction cups that can apply to any rough surfaces.

2016

GPW-M2 Wet Air Hole  
Cutting Machine (for Stone,  
Marble, Granite) / Surface  
Grinding Machine.



2008

GPW-221 / 221L  
Wet Air  
Sander / Polisher  
win The 2008  
Taiwan (SOE).

2011

GPW-A01  
Wet Air Beveling Machine.

2013

GPW-M1 Sink Oval Hole  
Cutter / Router for Wash-Basin  
(Stone, Marble, Granite).

2015

GPD-231 Wet Air Drilling  
Machine with Vacuum  
Suction Fixing Base.

2017

GP-UAS Uninterruptible Air  
Supply for Air Tools.





### Produce

GISON Machinery Co., Ltd. has more than 44 years of manufacturing Air Tools / Pneumatic Tools experience and GISON has achieved ISO-9001 quality system certification over 20 years. GISON is a professional manufacturer of Air Tools / Pneumatic Tools. All our Air Tools are made in TAIWAN. GISON Machinery Co., Ltd. has more than 500 models Air Tools, Pneumatic Tools, Air Wrench, Air Grinder, Air Sander, Air Polisher, Air Hammer, Air Drill, Air Screwdriver, Air Cutter, Vacuum Suction Cup ... etc.. GISON serve their customers all over the world in over 50 countries, especially in Europe, America and Australia, automobile repair, construction, decorating, fastening, handling and metal / wood / stone processing industry as the main target market.





## Quality



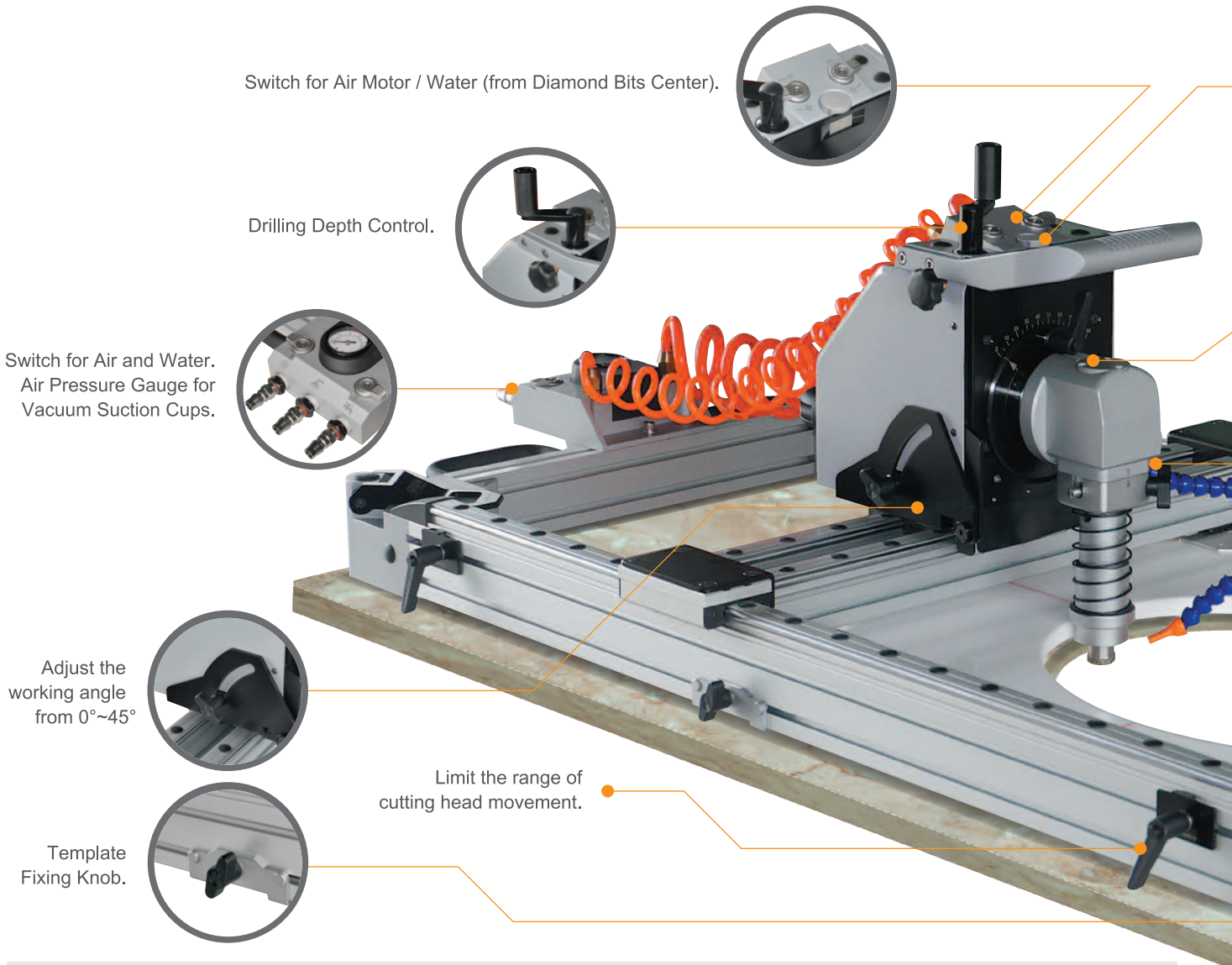
## Life Test





# GPW-M2

## WET AIR FORMING HOLE CUTTING MACHINE (HOLE CUTTER)



### Working Area

Available Cutting Size without Template	
Length	Max. 80 cm
Width	Max. 40 cm

Available Cutting Size by Template	
Length	Max. 60 cm
Width	Max. 40 cm

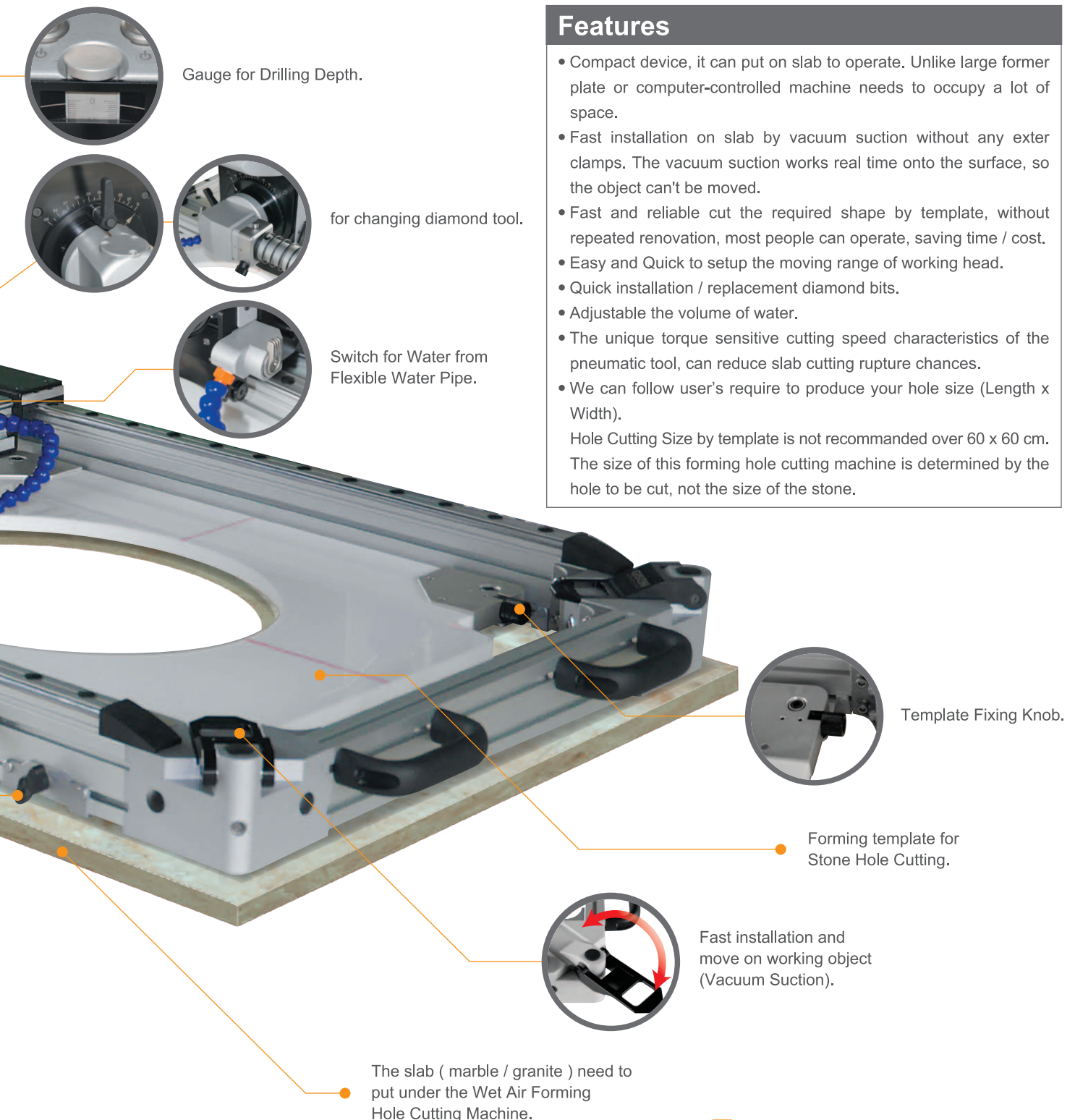
### Specifications (for Standard Size)

Max. Speed	9,700 RPM (no load)
Max Slab Thickness	30 mm
Weight	38 kgs
Size	141 x 66 x 39 cm (Length x Width x Height)
Air Pressure	6.3 kgf/cm <sup>2</sup> (90 psi)
Air Inlet	1/4"
Hose Size	6.5 mm (I.D.)
Air Cons.	560 L/min (19.8 scfm) – for Air Motor 350 L/min (12.4 scfm) – for Air Vacuum Suction

## Simple / Quick / Perfect Finishing / Time Saving / Low Cost

GPW-M2 is a multifunction working platform machine, which does not require extra fixture clamps.

GPW-M2 can be fast secured on the working platform by the vacuum suction cups. By using different functional heads to perform different task. For instance, drilling / hole cutting on stone (with assist of template), general cutting, surface grinding / sanding / polishing ... etc. Wide range of application, easy to operate, high efficiency, dust-free (water flushing) and other advantages.



### Features

- Compact device, it can put on slab to operate. Unlike large former plate or computer-controlled machine needs to occupy a lot of space.
- Fast installation on slab by vacuum suction without any exter clamps. The vacuum suction works real time onto the surface, so the object can't be moved.
- Fast and reliable cut the required shape by template, without repeated renovation, most people can operate, saving time / cost.
- Easy and Quick to setup the moving range of working head.
- Quick installation / replacement diamond bits.
- Adjustable the volume of water.
- The unique torque sensitive cutting speed characteristics of the pneumatic tool, can reduce slab cutting rupture chances.
- We can follow user's require to produce your hole size (Length x Width).  
Hole Cutting Size by template is not recommended over 60 x 60 cm. The size of this forming hole cutting machine is determined by the hole to be cut, not the size of the stone.



# GPW-510A

## WET AIR EDGE PROFILING MACHINE ( STONE ROUTER )

**01 Water Regulator**  
Adjust water flow.

**02 Cylinder Lubricating Oil**  
Pour Cylinder Lubrication oil from Air Inlet Regulator, convenient for operators to maintain and daily oil the machine. This design is different from traditional one, which is to pour oil from Air Inlet Tube.

**03 Regulator of adjusting height of machine**  
The function of adjusting height of machine enables operators to replace diamond bit and mill edge precisely (up to 35 mm).

**04 Gear Lubricating Oil Hole**  
Pour Gear Lubricating Oil directly from the hole. Fabricators can maintain the machine themselves and extend duration of gear.

**05 Gear Lubricating Oil Gauge**  
This gauge shows the status of gear oil so that operators can replenish oil anytime. It helps to increase working efficiency, extend machine duration and save maintenance cost.

**06 Working Handle**  
Ergonomic design of working handle enables users to work efficiently and reduce working fatigue. Rear working handle can support the machine when lift it up. Replace diamond bit easily for fabricators.

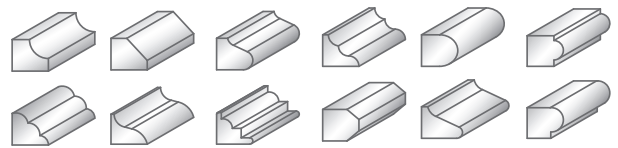
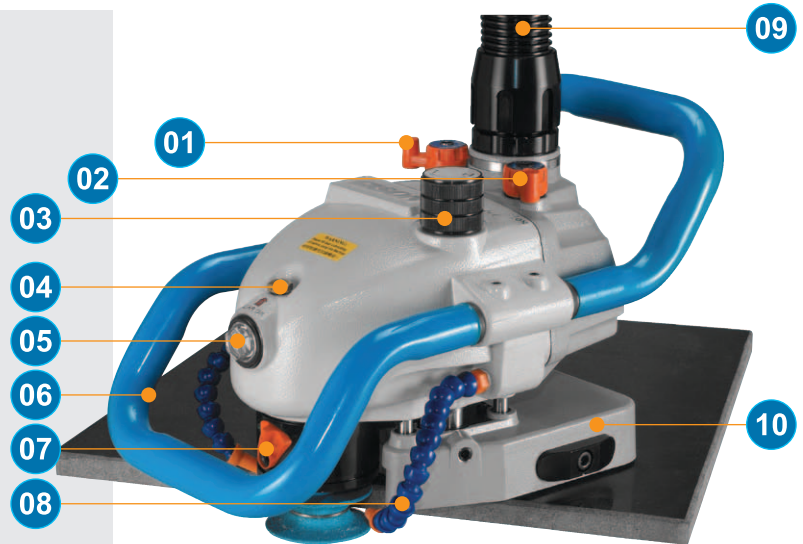
**07 Shifting knob for diamond bit**  
Shifting knob enables users to lock the spindle for replacing diamond bit.

**08 Flexuous water hose**  
The flexuous water hoses scour residue on diamond bit. It extends duration of bit and increases production efficiency.

**09 Exhaust Muffler Tube**  
Exhaust form muffler tube

- Avoid exhaust blowing to operators and affect working efficiency.
- Avoid exhaust to damage the surface of slab, or it will spend more labour cost and working hours to re-profile the slab.
- Muffler tube can lower down sound pressure to 84 dBA and prevent occupational hazards.
- Exhaust Locking Cap can swivel in 360 degree and avoid tubes to be twined. It is much more convenient for operation.

**10 Water Buoyancy Moving Base**  
Do not scratch the stone surface.

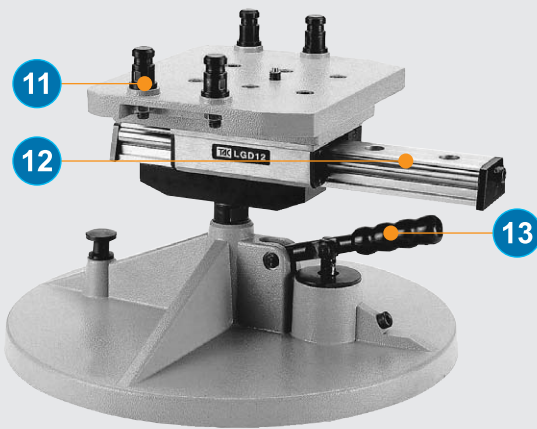


### GPW-510A WET AIR EDGE PROFILING MACHINE ( STONE ROUTER )

Max. Profiling Thickness	2~3 cm
Max. Speed	9,000 rpm
Horse Power	2.5 HP (1,864 W)
Spindle Size	Ø22.2 x 10 mm x M10 x P1.5
Max. diameter of Profile wheel	Ø80 mm
Net Weight	14.5 kgs
Length	300 mm
Width	210 mm
Height	270 mm
Air Cons.	1130 L/min (39.9 scfm)
Air Inlet	1/4"
Hose Size (I.D.)	10 mm
Sound Pressure	82.5 dBA
Air Pressure	6.3 kgf/cm <sup>2</sup> (90 psi)
Packing	1 pcs/ 1.3 cu.ft/ G.W.: 15 kgs

(without Profile Wheel)





**GPW-510**  
Wet Air Edge Profiling Machine  
(Inside / Outside)

GPW-510A + GPW-510B  
(without Profile Wheel)



**Inside milling**

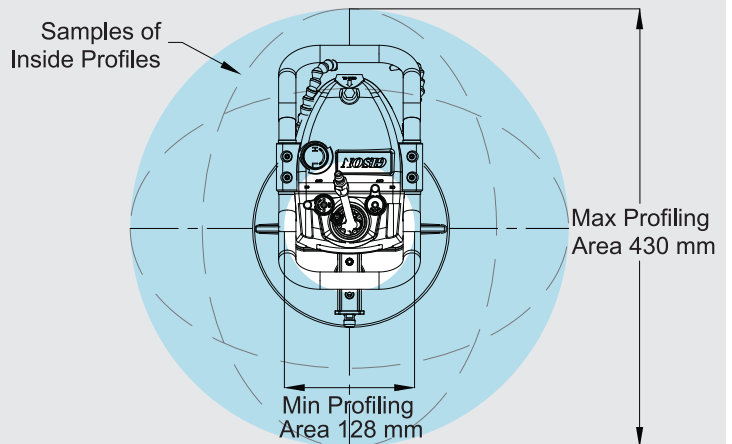
Portable design of machine and metal base / linear sliding rail mechanism allow inside edge profiling and polishing as well as straight, curved and elliptical cuts.

- 11 Linear Sliding Rail Mechanism**  
Enable users to connect the machine and bottom.
- 12 Bottom Board / Linear Sliding Rail Mechanism**  
Revolutionary design produces high performance of inside shaping as well as straight, curved edge.
- 13 Metal base with vacuum function**  
Use Vacuum Handle to pump out air and stabilize the metal base. The machine can be slid smoothly on linear sliding rail.

**GPW-510B**  
Rail Bracket for GPW-510A

Net Weight	7.1 kgs
Base Size	350 x 350 mm
Height	210 mm

**Interpretation of Inside Profiling Area :**

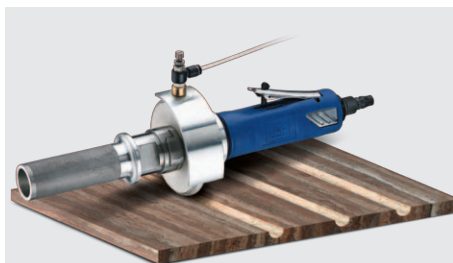


All the shapes in light blue area are available for profiling.  
(The thickness of slab and height of diamond bit will effect profiling area)

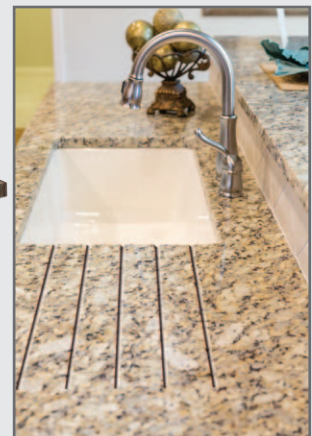
**GPW-222Q**  
Wet Air Fluting Tool  
Quick dis / assembly the fluting wheel

Guard Size	4" (100 mm)
Spindle Size	Ø22 mm
Max. Fluting Wheel Thickness	20 mm
Max. Speed	2,500 rpm
Net Weight	1.87 kgs
Length	330 mm
Air Cons.	430 L/min (15.2 scfm)
Air Inlet	1/4"
Hose Size (I.D.)	6.5 mm
Sound Pressure	95 dBA
Vibration	< 2.5 m/sec <sup>2</sup>
Air Pressure	6.3 kgf/cm <sup>2</sup> (90 psi)
Packing	8 pcs/ 2.4 cu.ft/ G.W.: 24 kgs

(with Water Hose)  
(without Air Hose)  
(without Fluting Wheel)



Using Fluting Wheels for reference

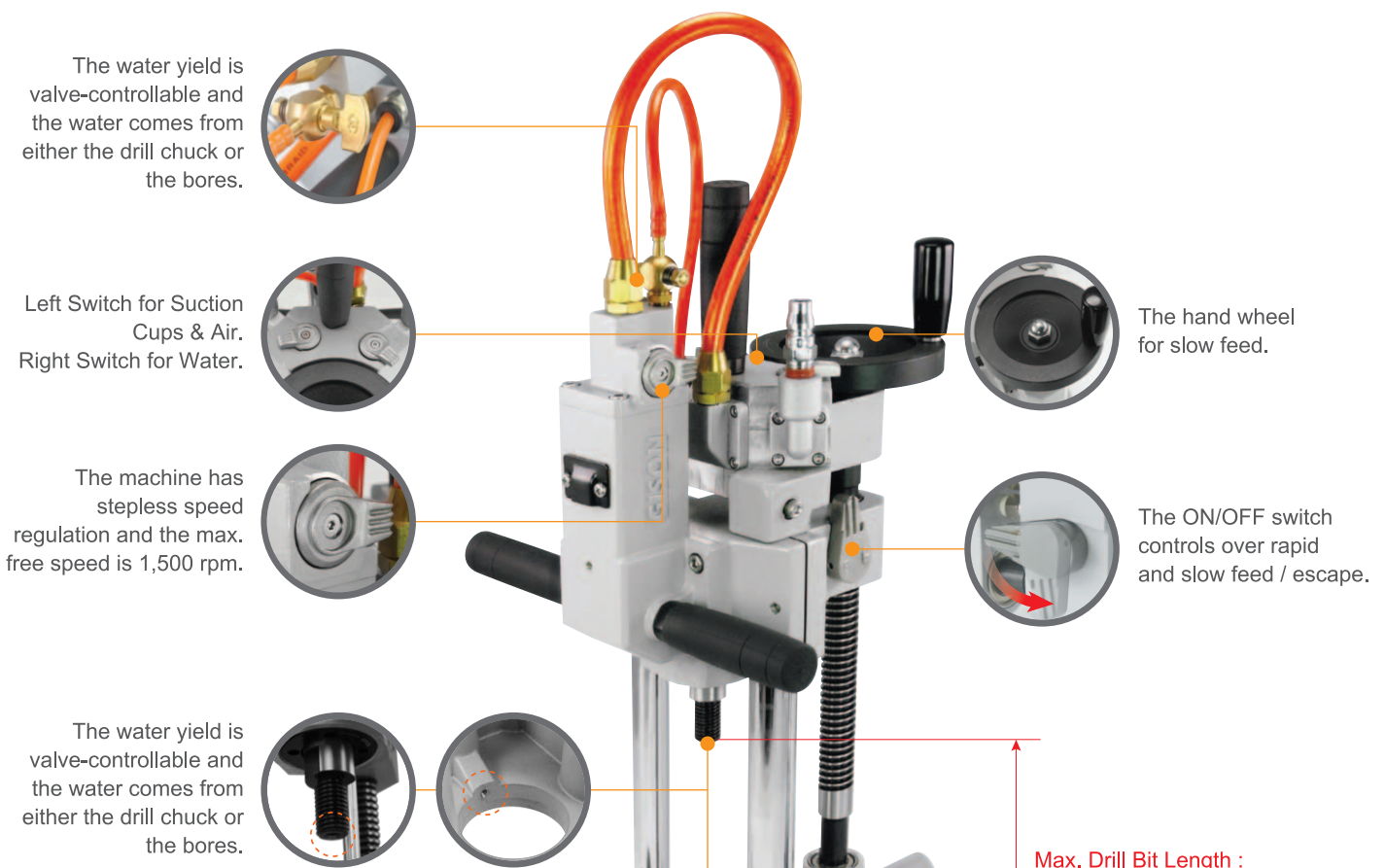




# GPD-231B

## PORTABLE AIR DRILLING MACHINE (include Vacuum Suction Fixing Base)

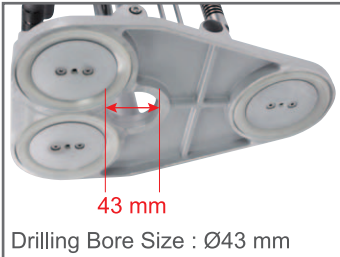
The novel Vacuum Suction Fixing Base of GPD-231B can apply to wet and rough flat surfaces such as stone, cement wall ... firmly and directly free of extra fixing devices.  
With no dust jobs (wet drilling), high efficiency, smooth wall of hole and precision.



Max. Drill Bit Length :  
160 mm

Spindle Thread	
Spindle Thread	M14, 5/8"-11
Max. Free Speed	1,500 rpm
Max. Core Drill Bit	Ø40 mm
Max. Drill Bit Length	160 mm
Drilling Bore Size	Ø43 mm
Suction Cup Size	86 mm x 3 pcs
Weight	8.61 kgs
Size (LxWxH)	28 x 24 x 46 cm
Working Pressure	6.3 kgf/cm <sup>2</sup> (90 psi)
Air Cons.	560 L/min (20 scfm)
Lift Capacity	60 kgs
Sound Pressure	92 dBA
Packing	1 pcs/ 1.9 cu.ft/ G.W.: 13 kgs

- The vacuum suction cups firm the drilling machine onto the surface of the workpiece firmly and directly free of extra fixing devices.
- The workpiece and the machine are attached firmly and closely by the vacuum suction, so no moving workpiece bothers the worker.





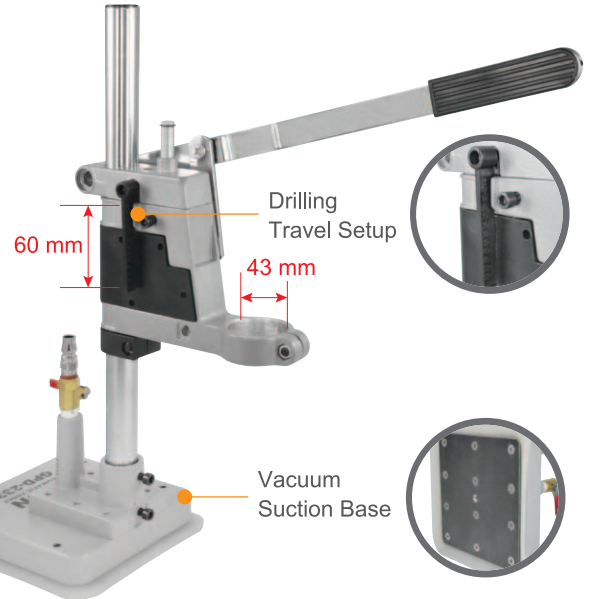
# GPD-233

## ELECTRIC DRILL STAND (with Vacuum Suction Fixing Base)

Electric / Air Drill vertical drilling auxiliary stand, with the low air consumption, it can work with the small 1.5 HP (1.1 kW) air compressor without the additional Vacuum Pump (Vacuum Generator).

### Specifications

Clamp Holding Spec	Ø43~38, 26 mm
Max. Drilling Travel	60 mm
Net Weight	2.54 kgs
Height	430 mm
Vacuum Suction Base Size	165 x 165 mm
Working Air Pressure	6.3 kgf/cm <sup>2</sup> (90 psi)
Air Cons.	78 L/min (2.75 scfm)
Lift Capacity	100 kgs



# GP-UAS

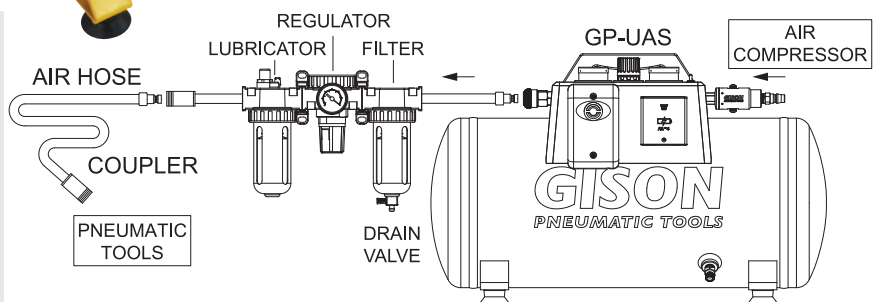
## UNINTERRUPTIBLE AIR SUPPLY

When the air pressure is less than the pressure in the air tank, the buzzer will sound to warn the user of the lack of pressure, the user need to immediately stop using the air tool, and remove the air tools from workpiece to prevent work injury caused by falling tools. ※One Uninterruptible Air Supply can only connect one Air Tools.



### Specifications

Air Receiver	22 L
The Maximum Storage Pressure	10 kgf/cm <sup>2</sup>
Weight	11.15 kgs
Size (LxWxH)	56 x 27 x 36 cm
Battery Box	4 pcs AA Batteries (without Batteries)
Battery Packing	1 pcs/ 2.94 cu.ft/ G.W.: 13.8 kgs





## GPW-227

Wet Air Cutting Saw

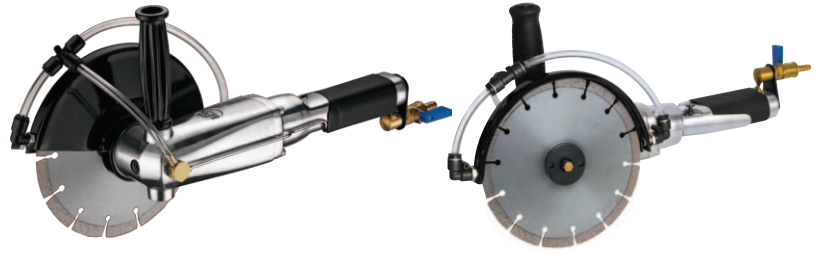
Guard Size	4-3/8" (110 mm)
Saw Blade Drill Ø	20 or 22 mm
Max. Cutting Depth	30 mm
Max. Speed	7,000 rpm
Net Weight	2.92 kgs
Length	330 mm
Air Cons.	470 L/min (16.6 scfm)
Air Inlet	1/4"
Hose Size (I.D.)	11 mm
Sound Pressure	85 dBA
Vibration	< 2.5 m/sec <sup>2</sup>
Air Pressure	6.3 kg/cm <sup>2</sup> (90 psi)
Packing	4 pcs/ 1.8 cu.ft/ G.W.: 15.5 kgs

(without Cutting Blade)

(without Air Hose / Water Hose)

Right Handle

Left Handle



## GPW-216C

Wet Air Cutting Saw

Guard Size	7" (178 mm)
Saw Blade Drill Ø	22.2 mm
Spindle Thread	5/8"-11, M14
Max. Speed	7,000 rpm
Horse Power	0.93 HP (694 W)
Net Weight	3.18 kgs
Length	485 mm
Air Cons.	500 L/min (17.7 scfm)
Air Inlet	3/8"
Hose Size (I.D.)	11 mm
Sound Pressure	93 dBA
Vibration	3.2 m/sec <sup>2</sup>
Air Pressure	6.3 kg/cm <sup>2</sup> (90 psi)
Packing	4 pcs/ 2.8 cu.ft/ G.W.: 18.3 kgs

(without Cutting Blade)

(without Air Hose / Water Hose)

Right Handle



## GPW-215CR

Wet Air Cutting Saw

Guard Size	5" (125 mm)
Saw Blade Drill Ø	22.2 mm
Spindle Thread	5/8"-11, M14
Max. Speed	11,000 rpm
Horse Power	0.61 HP (455W)
Net Weight	2.22 kgs
Length	380 mm
Air Cons.	460 L/min (16.2 scfm)
Air Inlet	1/4"
Hose Size (I.D.)	8.0 mm
Sound Pressure	92 dBA
Vibration	<2.5 m/sec <sup>2</sup>
Air Pressure	6.3 kg/cm <sup>2</sup> (90 psi)
Packing	6 pcs/ 2.0 cu.ft/ G.W.: 18.5 kgs

(without Cutting Blade)

(without Air Hose / Water Hose)

Left Handle



## GPW-214C GPW-215C

Wet Air Cutting Saw

Guard Size	GPW-214C : 4" (100 mm) GPW-215C : 5" (125 mm)
Saw Blade Drill Ø	22.2 mm
Spindle Thread	5/8"-11, M14
Max. Speed	11,000 rpm
Horse Power	0.61 HP (455 W)
Net Weight	2.02 kgs
Length	380 mm
Air Cons.	460 L/min (16.2 scfm)
Air Inlet	1/4"
Hose Size (I.D.)	8.0 mm
Sound Pressure	92 dBA
Vibration	< 2.5 m/sec <sup>2</sup>
Air Pressure	6.3 kg/cm <sup>2</sup> (90 psi)
Packing	6 pcs/ 2.0 cu.ft/ G.W.: 17 kgs

(without Cutting Blade)

(without Air Hose / Water Hose)



### GPW-211

Wet Air Polisher / Sander

Spindle Thread	5/8"-11, M14
Pad Size	5.5" (140 mm)
Max. Speed	4,500 rpm
Horse Power	0.62 HP (462 W)
Net Weight	2.20 kgs
Length	430 mm
Air Cons.	460 L/min (16.2 scfm)
Air Inlet	1/4"
Hose Size (I.D.)	6.5 mm
Sound Pressure	97 dBA
Vibration	< 2.5 m/sec <sup>2</sup>
Air Pressure	6.3 kg/cm <sup>2</sup> (90 psi)
Packing	6 pcs/ 1.5 cu.ft/ G.W.: 17 kgs

(without Air Hose / Water Hose)



### GPW-212

Wet Air Polisher / Sander

Spindle Thread	5/8"-11, M14
Pad Size	5.5" (140 mm)
Max. Speed	2,500 rpm
Horse Power	0.62 HP (462 W)
Net Weight	2.20 kgs
Length	430 mm
Air Cons.	460 L/min (16.2 scfm)
Air Inlet	1/4"
Hose Size (I.D.)	6.5 mm
Sound Pressure	95 dBA
Vibration	< 2.5 m/sec <sup>2</sup>
Air Pressure	6.3 kg/cm <sup>2</sup> (90 psi)
Packing	6 pcs/ 1.5 cu.ft/ G.W.: 17 kgs

(without Air Hose / Water Hose)



### GPW-933A

Wet Air Polisher / Sander

Spindle Thread	5/8"-11, M14
Pad Size	5.5" (140 mm)
Max. Speed	4,200 rpm
Horse Power	0.64 HP (477 W)
Net Weight	2.64 kgs
Length	330 mm
Air Cons.	470 L/min (16.6 scfm)
Air Inlet	1/4"
Hose Size (I.D.)	6.5 mm
Sound Pressure	88 dBA
Vibration	< 2.5 m/sec <sup>2</sup>
Air Pressure	6.3 kg/cm <sup>2</sup> (90 psi)
Packing	6 pcs/ 1.8 cu.ft/ G.W.: 19 kgs

(without Air Hose / Water Hose)



### GPW-215

Wet Air Grinder

Spindle Thread	5/8"-11, M14
Guard Size	5" (125 mm)
Pad Size	5.5" (140 mm)
Max. Speed	11,000 rpm
Horse Power	0.61 HP (455 W)
Net Weight	2.00 kgs
Length	300 mm
Air Cons.	600 L/min (21.2 scfm)
Air Inlet	1/4"
Hose Size (I.D.)	8.0 mm
Sound Pressure	92 dBA
Vibration	< 2.5 m/sec <sup>2</sup>
Air Pressure	6.3 kg/cm <sup>2</sup> (90 psi)
Packing	6 pcs/ 1.8 cu.ft/ G.W.: 17 kgs

(with Guard / Sanding Pad)  
(without Air Hose / Water Hose)  
(without Cup Wheels)



### GPW-216

Wet Air Grinder

Spindle Thread	5/8"-11, M14
Guard Size	7" (178 mm)
Pad Size	5.5" (140 mm)
Max. Speed	7,000 rpm
Horse Power	0.93 HP (694 W)
Net Weight	3.20 kgs
Length	430 mm
Air Cons.	740 L/min (26.1 scfm)
Air Inlet	3/8"
Hose Size (I.D.)	11.0 mm
Sound Pressure	93 dBA
Vibration	3.2 m/sec <sup>2</sup>
Air Pressure	6.3 kg/cm <sup>2</sup> (90 psi)
Packing	6 pcs/ 1.5 cu.ft/ G.W.: 25 kgs

(with Guard / Sanding Pad)  
(without Air Hose / Water Hose)  
(without Cup Wheels)





## GPW-7

Wet Air Sander / Polisher

<b>Front Side Exhaust</b>	<b>ON/OFF Switch</b>
Spindle Thread	5/8"-11, M14, M16
Pad Size	3" (75 mm) or 4" (100 mm)
Max. Speed	4,500 rpm
Horse Power	0.43 HP (321 W)
Net Weight	1.17 kgs
Length	246 mm
Air Cons.	460 L/min (16.2 scfm)
Hose Size (I.D.)	6.5 mm
Sound Pressure	84 dBA
Vibration	< 2.5 m/sec <sup>2</sup>
Air Pressure	6.3 kg/cm <sup>2</sup> (90 psi)
Packing	10 pcs/ 1.4 cu.ft/ G.W.: 20 kgs

(without Air Hose / Water Hose)



## GPW-218

Wet Air Sander / Polisher

<b>Rear Exhaust</b>	<b>ON/OFF Switch</b>
Spindle Thread	5/8"-11, M14
Pad Size	3" (75 mm) or 4" (100 mm)
Max. Speed	4,500 rpm
Horse Power	0.43 HP (321 W)
Net Weight	1.23 kgs
Length	234 mm
Air Cons.	450 L/min (15.9 scfm)
Hose Size (I.D.)	6.5 mm
Sound Pressure	84 dBA
Vibration	< 2.5 m/sec <sup>2</sup>
Air Pressure	6.3 kg/cm <sup>2</sup> (90 psi)
Packing	8 pcs/ 1.4 cu.ft/ G.W.: 22 kgs

(with 150 cm Air Hose and Water Hose)



## GPW-220

Wet Air Sander / Polisher

<b>Rear Exhaust</b>	<b>ON/OFF Switch</b>
Spindle Thread	5/8"-11, M14
Pad Size	3" (75 mm) or 4" (100 mm)
Max. Speed	3,600 rpm
Horse Power	0.43 HP (321 W)
Net Weight	1.27 kgs
Length	234 mm
Air Cons.	430 L/min (15.2 scfm)
Hose Size (I.D.)	6.5 mm
Sound Pressure	84 dBA
Vibration	< 2.5 m/sec <sup>2</sup>
Air Pressure	6.3 kg/cm <sup>2</sup> (90 psi)
Packing	8 pcs/ 1.5 cu.ft/ G.W.: 23 kgs

(with 150 cm Air Hose and Water Hose)



## GPW-7L

Wet Air Sander / Polisher

<b>Front Side Exhaust</b>	<b>Safety Lever</b>
Spindle Thread	5/8"-11, M14, M16
Pad Size	3" (75 mm) or 4" (100 mm)
Max. Speed	4,500 rpm
Horse Power	0.43 HP (321 W)
Net Weight	1.16 kgs
Length	242 mm
Air Cons.	460 L/min (16.2 scfm)
Hose Size (I.D.)	6.5 mm
Sound Pressure	84 dBA
Vibration	< 2.5 m/sec <sup>2</sup>
Air Pressure	6.3 kg/cm <sup>2</sup> (90 psi)
Packing	10 pcs/ 1.4 cu.ft/ G.W.: 20 kgs

(without Air Hose / Water Hose)



## GPW-218L

Wet Air Sander / Polisher

<b>Rear Exhaust</b>	<b>Safety Lever</b>
Spindle Thread	5/8"-11, M14
Pad Size	3" (75 mm) or 4" (100 mm)
Max. Speed	4,500 rpm
Horse Power	0.43 HP (321 W)
Net Weight	1.27 kgs
Length	250 mm
Air Cons.	430 L/min (15.2 scfm)
Hose Size (I.D.)	6.5 mm
Sound Pressure	84 dBA
Vibration	< 2.5 m/sec <sup>2</sup>
Air Pressure	6.3 kg/cm <sup>2</sup> (90 psi)
Packing	8 pcs/ 1.5 cu.ft/ G.W.: 23kgs

(with 150 cm Air Hose and Water Hose)



## GPW-220L

Wet Air Sander / Polisher

<b>Rear Exhaust</b>	<b>Safety Lever</b>
Spindle Thread	5/8"-11, M14
Pad Size	3" (75 mm) or 4" (100 mm)
Max. Speed	3,600 rpm
Horse Power	0.43 HP (321 W)
Net Weight	1.31 kgs
Length	250 mm
Air Cons.	430 L/min (15.2 scfm)
Hose Size (I.D.)	6.5 mm
Sound Pressure	84 dBA
Vibration	< 2.5 m/sec <sup>2</sup>
Air Pressure	6.3 kg/cm <sup>2</sup> (90 psi)
Packing	8 pcs/ 1.5 cu.ft/ G.W.: 23 kgs

(with 150 cm Air Hose and Water Hose)



### GPW-221

Wet Air Sander / Polisher

Rear Exhaust	ON/OFF Switch
Spindle Thread	5/8"-11, M14
Pad Size	3" (75 mm) or 4" (100 mm)
Max. Speed	3,600 rpm
Horse Power	0.52 HP (388 W)
Net Weight	1.52 kgs
Length	285 mm
Air Cons.	440 L/min (15.5 scfm)
Hose Size (I.D.)	6.5 mm
Sound Pressure	80 dBA
Vibration	< 2.5 m/sec <sup>2</sup>
Air Pressure	6.3 kg/cm <sup>2</sup> (90 psi)
Packing	8 pcs/ 1.3 cu.ft/ G.W.: 21 kgs

(with 150 cm Air Hose and Water Hose)

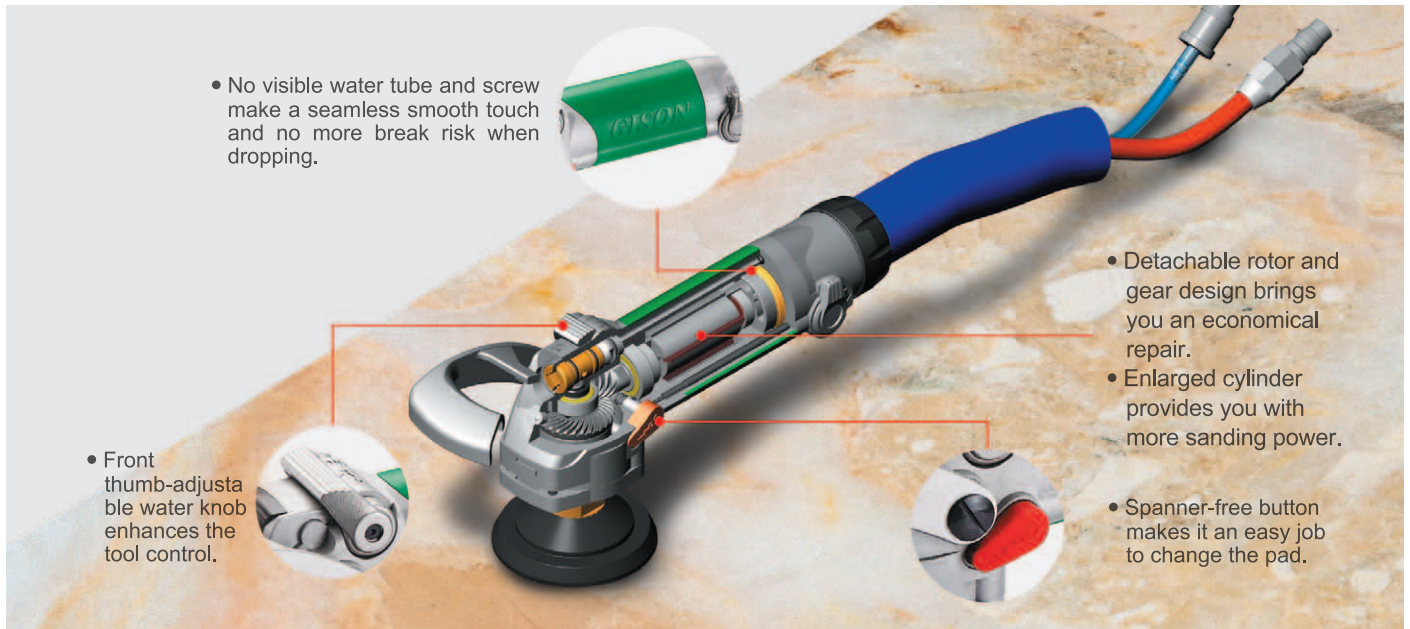


### GPW-221L

Wet Air Sander / Polisher

Rear Exhaust	Safety Lever
Spindle Thread	5/8"-11, M14
Pad Size	3" (75 mm) or 4" (100 mm)
Max. Speed	3,600 rpm
Horse Power	0.52 HP (388 W)
Net Weight	1.61 kgs
Length	295 mm
Air Cons.	440 L/min (15.5 scfm)
Hose Size (I.D.)	6.5 mm
Sound Pressure	80 dBA
Vibration	< 2.5 m/sec <sup>2</sup>
Air Pressure	6.3 kg/cm <sup>2</sup> (90 psi)
Packing	8 pcs/ 1.3 cu.ft/ G.W.: 21 kgs

(with 150 cm Air Hose and Water Hose)



**The benefits of Spanner-Free (Shaft Lock) system :**

The Spanner-Free (Shaft Lock) system makes it an easy job to change the backing pad. Spanner-Free system can extend the life of gear. Because the user replace the wet diamond polishing pad quickly and velcro's problem, a diamond polishing pad is often attached off-center on the backing pad, ex. a little bit away from the spindle, and when such a pad is rotated fast and pressed against the stone surface, the drive shaft gets affected and damages a gear. Spanner-Free system has Safety design, it can prevent user mistakenly pressing the lock button when this wet air polisher start.



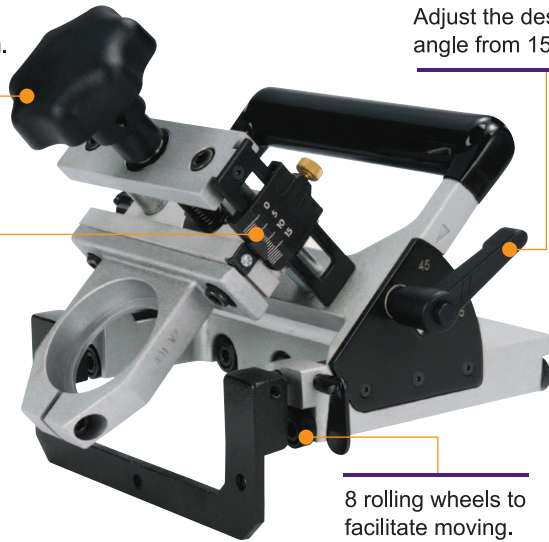
## Simple Operation · Perfect Finishing · Time Saving

Adjust the beveling depth from 0.1~10 mm.

Adjust the desirable bevel angle from 15°~45°



Micrometric scale to calibrate the chamfering depth.



8 rolling wheels to facilitate moving.

### GPW-A01 Beveling Auxiliary Base

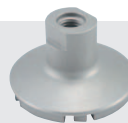
Beveling Angle	15°~45°
Beveling Depth	0.1~10 mm
Max. Pad Size	4" (100 mm)
Net Weight	2.02 kgs
Length	200 mm
Width	190 mm
Height	170 mm
Clamp Spec.	GPW-7/7L : Ø52.5 mm GPW-218 / 218L, 220 / 220L : Ø54.5 mm
Packing	8 pcs/ 3.5 cu.ft/ G.W.: 17.7 kgs (without Wet Air Sander / Polisher / Grinder)



### GPW-A02B 90° Edge Polishing Auxiliary Base for Long / Big Slab

Beveling Angle	60°~90°
Polishing Thickness	5~50 mm for 4" pad 5~35 mm for 3" pad
Max. Pad Size	4" (100 mm)
Weight	1.62 kgs
Packing	8pcs/ 3.5 cu.ft/ G.W.: 17.5 kgs

(without Wet Air Sander / Polisher)



### A01PDMP75G Diamond Grinding Wheel (for Granite)

Diameter	75 mm
Weight	432 g
Height	45 mm
Grit Size	40# Sintered
Thread	M14 or 5/8"-11



### A01PDMP75M Diamond Grinding Wheel (for Marble)

Diameter	75 mm
Weight	437 g
Height	45 mm
Grit Size	40# Electroplated
Thread	M14 or 5/8"-11

### Fit Tools

Designed to fit various GISON's sanders / polishers / grinders, simply by changing the clamp.  
Quick change the abrasive / polishing pad while working.



GPW-7

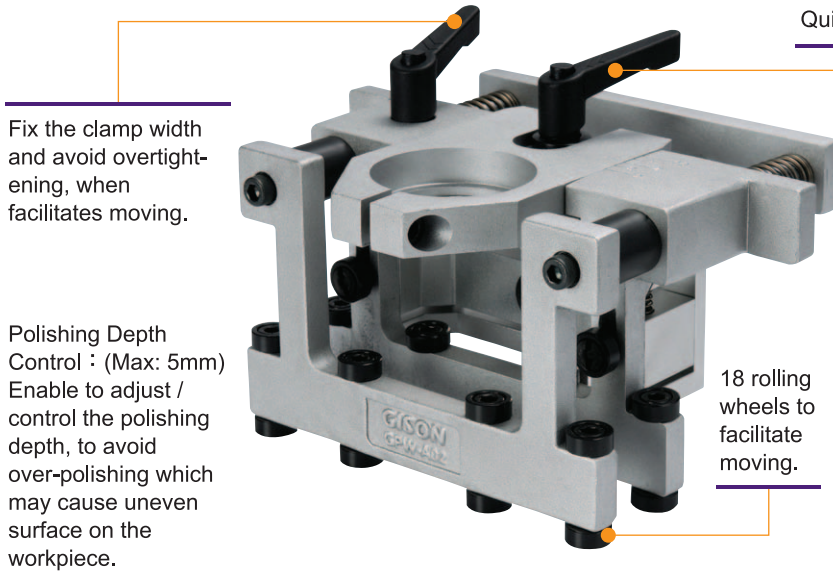


GPW-7L





# Simple Operation - Perfect Finishing - Time Saving



Fix the clamp width and avoid overtightening, when facilitates moving.

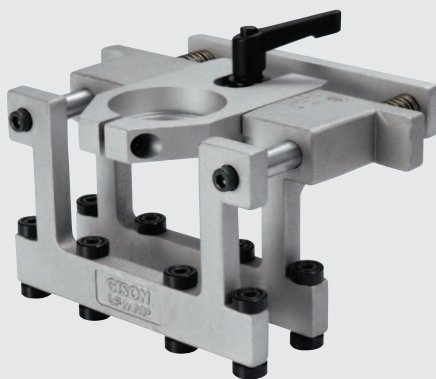
Polishing Depth Control : (Max: 5mm)  
Enable to adjust / control the polishing depth, to avoid over-polishing which may cause uneven surface on the workpiece.

Quick installation and removal of fixtures

18 rolling wheels to facilitate moving.

## GPW-A02A 90° Edge Polishing Auxiliary Base

Polishing Thickness	20~40 mm
Max. Pad Size	3" (75 mm)
Net Weight	1.67 kgs
Length	190 mm
Width	138 mm
Height	134 mm
Packing	8 pcs/ 1.5 cu.ft/ G.W.: 15.5 kgs <i>(without Wet Air Sander / Polisher)</i>



## GPW-A02 90° Edge Polishing Auxiliary Base Economical Choice ( Non-Polishing Depth Control )

Polishing Thickness	5~40 mm
Max. Pad Size	3" (75 mm)
Weight	1.29 kgs
Packing	8 pcs/ 1.5 cu.ft/ G.W.: 11.5 kgs <i>(without Wet Air Sander / Polisher)</i>



GPW-218



GPW-218L



GPW-220



GPW-220L



## GP-822AR2

Mini. Air Angle Polisher

Pad Size	2" (50mm)
Free Speed	3,500 rpm
Net Weight	0.70 kgs
Length	178 mm
Air Cons.	480 L/min (16.9 scfm)
Air Inlet	1/4"
Hose Size (I.D.)	6.5 mm
Sound Pressure	70 dBA
Vibration	< 2.5 m/sec <sup>2</sup>
Air Pressure	6.3 kg/cm <sup>2</sup> (90 psi)
Packing	20 pcs/ 1.6 cu.ft/ G.W.: 20 kgs



## GP-823ST5

Mini. Air Angle Polisher

Pad Size	5" (50mm)
Free Speed	4,000 rpm
Net Weight	1.0 kgs
Length	203 mm
Air Cons.	650 L/min (16.9 scfm)
Air Inlet	1/4"
Hose Size (I.D.)	6.5 mm
Sound Pressure	84 dBA
Vibration	< 2.5 m/sec <sup>2</sup>
Air Pressure	6.3 kg/cm <sup>2</sup> (90 psi)
Packing	10 pcs/ 0.96 cu.ft/ G.W.: 12.8 kgs



## GP-902W

Wet Air Belt Sander

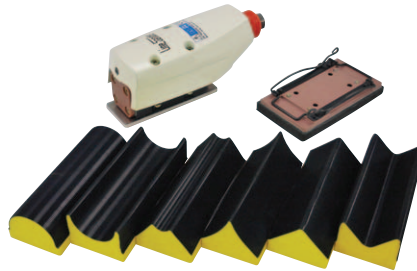
Belt Size	10 mm × 330 mm
Free Speed	16,000 rpm
Net Weight	0.93 kgs
Length	330 mm
Air Cons.	560 L/min (19.8 scfm)
Air Inlet	1/4"
Hose Size (I.D.)	6.5 mm
Sound Pressure	88 dBA
Vibration	4.0 m/sec <sup>2</sup>
Air Pressure	6.3 kg/cm <sup>2</sup> (90 psi)
Packing	20 pcs/ 1.6 cu.ft/ G.W.: 17 kgs



## GP-845C

Straight Line Air Sander

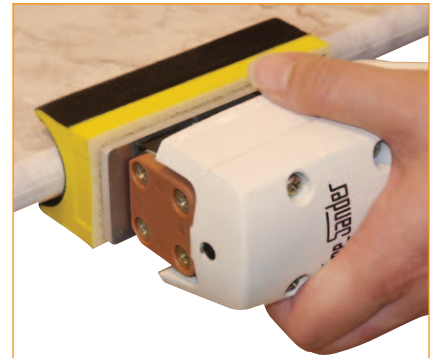
Pad Size	57 mm × 100 mm
Free Speed	4000 bpm
Net Weight	0.7 kgs
Length	155 mm
Air Cons.	110 L/min (3.9 scfm)
Air Inlet	1/4"
Hose Size (I.D.)	6.5 mm
Sound Pressure	81 dBA
Vibration	< 2.5 m/sec <sup>2</sup>
Air Pressure	6.3 kg/cm <sup>2</sup> (90 psi)
Packing	12 pcs/ 1.58 cu.ft/ G.W.: 18 kgs



## GP-845CK

Straight Line Air Sander Kit

Contents	GP-845C x 1 pc
	Medium Hook Face Plate x 1 pc
	Differen Shaps Sanding Pads x 6 pcs
	Nap face Sandpaper #320 x 1 pc
Packing	10 sets/ 3.1 cu.ft/ G.W.: 15.6 kgs





**GP-8246C**  
Micro Air Grinder

Collet Size	3 mm (1/8")
Max Speed	60,000 rpm
Net Weight	0.35 kgs
Length	135 mm
Air Cons.	230 L/min (8.1 scfm)
Air Inlet	1/4"
Hose Size (I.D.)	5 mm
Sound Pressure	85 dBA
Vibration	< 2.5 m/sec <sup>2</sup>
Air Pressure	6.3 kg/cm <sup>2</sup> (90 psi)
Packing	25 pcs/ 0.96 cu.ft/ G.W.: 16 kgs



**GP-8240D**  
Micro Air Grinder

Collet Size	3 mm (1/8") & 6 mm (1/4")
Max Speed	35,000 rpm
Net Weight	0.50 kgs
Length	175 mm
Air Cons.	340 L/min (12 scfm)
Air Inlet	1/4"
Hose Size (I.D.)	5 mm
Sound Pressure	82 dBA
Vibration	< 2.5 m/sec <sup>2</sup>
Air Pressure	6.3 kg/cm <sup>2</sup> (90 psi)
Packing	20 pcs/ 0.9 cu.ft/ G.W.: 11 kgs



**GP-824JH**  
Micro Air Grinder

Collet Size	6 mm (1/4")
Max Speed	20,000 rpm
Net Weight	0.70 kgs
Length	165 mm
Air Cons.	490 L/min (17.3 scfm)
Air Inlet	1/4"
Hose Size (I.D.)	5 mm
Sound Pressure	85 dBA
Vibration	< 2.5 m/sec <sup>2</sup>
Air Pressure	6.3 kg/cm <sup>2</sup> (90 psi)
Packing	20 pcs/ 1.1 cu.ft/ G.W.: 19 kgs



**GP-824L1**  
Extended Air Die Grinder

Collet Size	6 mm (1/4")
Max Speed	18,000 rpm
Net Weight	1.10 kgs
Length	320 mm
Air Cons.	450 L/min (15.9 scfm)
Air Inlet	1/4"
Hose Size (I.D.)	5 mm
Sound Pressure	89 dBA
Vibration	< 2.5 m/sec <sup>2</sup>
Air Pressure	6.3 kg/cm <sup>2</sup> (90 psi)
Packing	20 pcs/ 1.7 cu.ft/ G.W.: 28 kgs



**GP-824EF**  
Extended Air Die Grinder

Collet Size	6 mm or 8 mm
Max Speed	13,500 rpm
Net Weight	1.74 kgs
Length	378 mm
Air Cons.	590 L/min (20.8 scfm)
Air Inlet	1/4"
Hose Size (I.D.)	6.5 mm
Sound Pressure	86 dBA
Vibration	< 2.5 m/sec <sup>2</sup>
Air Pressure	6.3 kg/cm <sup>2</sup> (90 psi)
Packing	10 pcs/ 0.9 cu.ft/ G.W.: 20.5 kgs



**GP-832L**  
Air Angle Grinder

Collet Size	100 mm (4")
Max Speed	12,000 rpm
Net Weight	1.69 kgs
Length	226 mm
Air Cons.	450 L/min (15.9 scfm)
Air Inlet	1/4"
Hose Size (I.D.)	8 mm
Sound Pressure	80 dBA
Vibration	< 2.5 m/sec <sup>2</sup>
Air Pressure	6.3 kg/cm <sup>2</sup> (90 psi)
Packing	10 pcs/ 1.75 cu.ft/ G.W.: 24 kgs



**GP-851P**  
Air Needle Scaler

Needle	3mm × 28pcs
Stroke Speed	3,500 bpm
Net Weight	3.5 kgs
Length	360 mm
Air Cons.	420 L/min (14.8 scfm)
Air Inlet	3/8"
Hose Size (I.D.)	8 mm
Sound Pressure	93 dBA
Vibration	14.6 m/sec <sup>2</sup>
Air Pressure	6.3 kg/cm <sup>2</sup> (90 psi)
Packing	6 pcs/ 1.5 cu.ft/ G.W.: 24 kgs



**GP-851H1**  
Air Needle Scaler

Needle	3mm × 19pcs
Stroke Speed	4,600 bpm
Net Weight	3.2 kgs
Length	460 mm
Air Cons.	420 L/min (14.8 scfm)
Air Inlet	1/4"
Hose Size (I.D.)	8 mm
Sound Pressure	97 dBA
Vibration	13.5 m/sec <sup>2</sup>
Air Pressure	6.3 kg/cm <sup>2</sup> (90 psi)
Packing	6 pcs/ 1.3 cu.ft/ G.W.: 22 kgs



**GP-851IN**  
Air Needle Scaler

Needle	3mm × 12pcs
Stroke Speed	4,800 bpm
Net Weight	1.3 kgs
Length	290 mm
Air Cons.	210 L/min (7.4 scfm)
Air Inlet	1/4"
Hose Size (I.D.)	8 mm
Sound Pressure	91 dBA
Vibration	14.5 m/sec <sup>2</sup>
Air Pressure	6.3 kg/cm <sup>2</sup> (90 psi)
Packing	10 pcs/ 0.5 cu.ft/ G.W.: 14 kgs



**GP-970**  
Air Spot Sand Blaster for Stone

Net Weight	0.99 kgs
Length	215 mm
Air Cons.	0.35 m <sup>3</sup> /min
Air Inlet	1/4"
Hose Size (I.D.)	6.5 mm
Sound Pressure	95 dBA
Air Pressure	6.3 kg/cm <sup>2</sup> (90 psi)
Packing	10 pcs/ 2.4 cu.ft/ G.W.: 12 kgs





**GP-940**  
Air Engraving-Scribe Pen

Body Material	Steel
Stroke Speed	34,000 bpm
Sleeve Type (Option)	Thin point : 0.1 mm Medium point : 0.2 mm (Default) Large point : 0.3 mm
Net Weight	0.24 kgs
Length	160 mm
Air Cons.	70 L/min (2.4 scfm)
Air Inlet	1/4"
Hose Size (I.D.)	6.5 mm
Sound Pressure	75 dBA
Vibration	2.9 m/sec <sup>2</sup>
Air Pressure	6.3 kg/cm <sup>2</sup> (90 psi)
Packing	20 pcs/ 1.74 cu.ft/ G.W.: 7.0 kgs



**GP-940C**  
Air Engraving-Scribe Pen

Body Material	Plastic
Stroke Speed	34,000 bpm
Sleeve Type	0.5 mm
Net Weight	0.18 kgs
Length	140 mm
Air Cons.	60 L/min (2.1 scfm)
Air Inlet	1/4"
Hose Size (I.D.)	6.5 mm
Sound Pressure	78 dBA
Vibration	2.7 m/sec <sup>2</sup>
Air Pressure	6.3 kg/cm <sup>2</sup> (90 psi)
Packing	30 pcs/ 1.6 cu.ft/ G.W.: 10 kgs



**GP-851IF**  
Air Flux Chipper

Stroke Speed	4,800 bpm
Net Weight	1.04 kgs
Length	230 mm
Air Cons.	210 L/min (7.4 scfm)
Air Inlet	1/4"
Hose Size (I.D.)	8 mm
Sound Pressure	90 dBA
Vibration	14.5 m/sec <sup>2</sup>
Air Pressure	6.3 kg/cm <sup>2</sup> (90 psi)
Packing	10 pcs/ 0.5 cu.ft/ G.W.: 12 kgs

**GPW-4500**  
**GPW-7000**

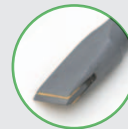
Mini. Air Hammer

- ▶ For Fine Masonry Work
- ▶ Built-in Air Regulator  
(control by pressing the trigger or knob below the handle)
- ▶ With a Tungsten Steel Chisel



Model	GPW-4500	GPW-7000
Stroke Speed	4,500 bpm	7,000 bpm
Piston Stroke	36 mm	36 mm
Shank Size	Ø10.2 mm	Ø10.2 mm
Net Weight	0.73 kgs	0.75 kgs
Length	155 mm	155 mm
Air Cons.	120 L/min (4.2 scfm)	120 L/min (4.2 scfm)
Air Inlet	1/4"	1/4"
Hose Size (I.D.)	6.5 mm	6.5 mm
Sound Pressure	88 dBA	88 dBA
Air Pressure	6.3 kg/cm <sup>2</sup> (90 psi)	6.3 kg/cm <sup>2</sup> (90 psi)
Packing	20 pcs/ 1.2 cu.ft/ G.W.: 19 kgs	20 pcs/ 1.2 cu.ft/ G.W.: 19 kgs

Flat Tungsten Steel Chisel (For GPW-4500 / 7000)



**GPW-FR17**

Round Shank  
Length : 220 mm



**GPW-FR17S**

Round Shank  
Length : 162 mm





**GAS-617F**  
Suction Lifter

Lift Capacity	60 kgs
Diameter	123 mm
Net Weight	0.94 kgs



**GAS-619**  
Suction Lifter

Lift Capacity	80 kgs
Diameter	123 mm
Net Weight	1.34 kgs



**GAS-620**  
Suction Lifter

Lift Capacity	100 kgs
Diameter	123 mm
Net Weight	1.70 kgs



**GAS-617C**  
Seam Setter

Diameter	117 mm ( 4.6" )
Net Weight	2.00 kgs
Material	Aluminum
Packing	5 pcs/ 2.4 cu.ft/ G.W.: 14.2 kgs



**GAS-617H**  
Seam Setter (for Large Material)

Diameter	200 mm ( 8" )
Net Weight	5.50 kgs
Material	Aluminum
Packing	2 pcs/ 2.7 cu.ft/ G.W.: 21.5 kgs



**GAS-617E**  
Seam Setter (Supporting Backsplash)

Diameter	117 mm ( 4.6" )
Net Weight	1.56 kgs
Material	Aluminum
Packing	10 pcs/ 2.34 cu.ft/ G.W.: 16.6 kgs



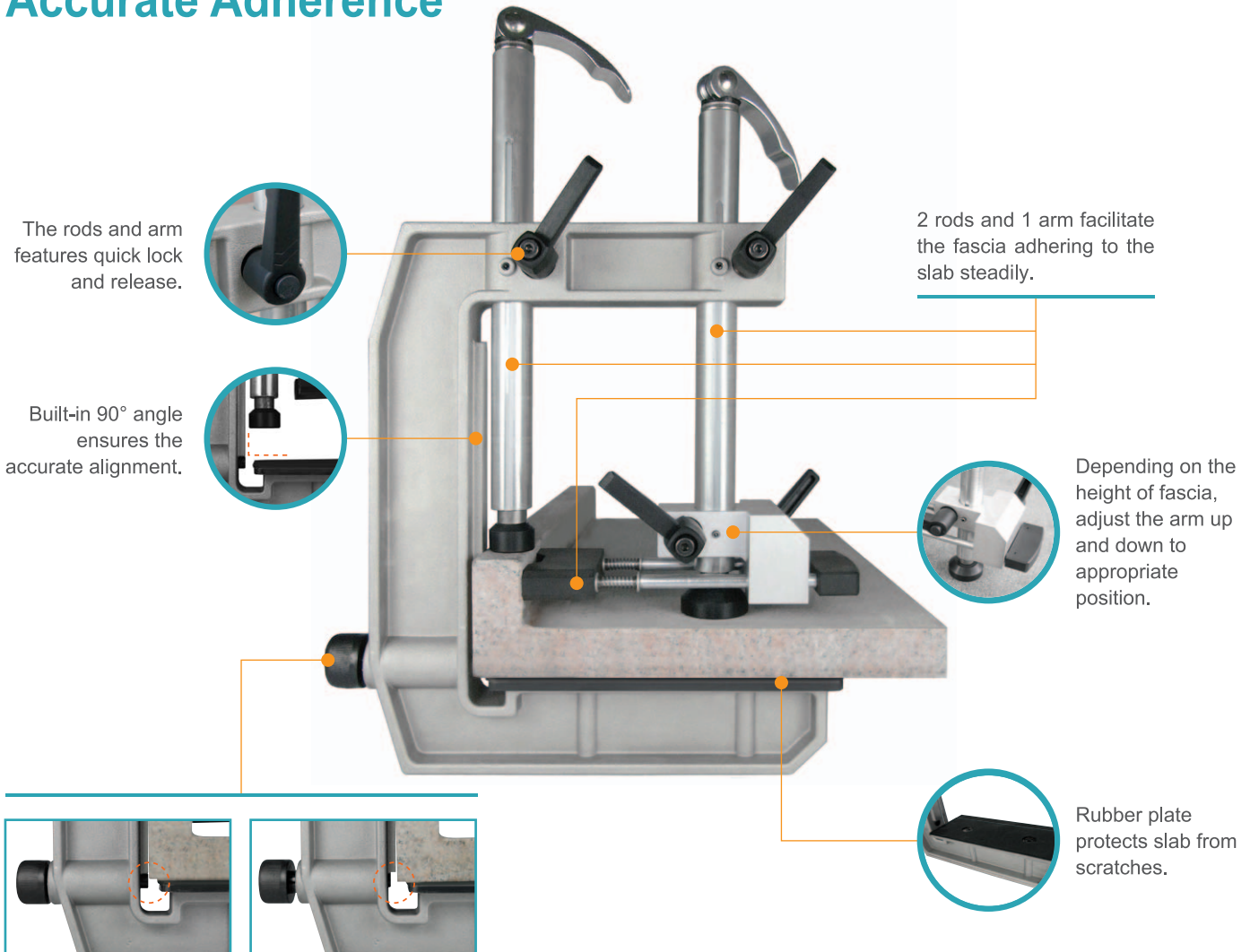
**GAS-617T**  
Seam Setter

Diameter	117 mm ( 4.6" )
Net Weight	1.00 kgs
Material	Aluminum
Packing	10 pcs/ 2.3 cu.ft/ G.W.: 10.4 kgs



# GPW-A03 45° Mitre Clamp

Simple Operation , Time Saving , Working Efficiency ,  
Accurate Adherence



Once position fixed, unscrew the assisted positioning knob to prevent te overflowing glue from adhering slabs to clamp.



### Specifications

Max. Available Fascias Height	140 mm
Net Weight	1.85 kgs
Packing	6 pcs/ 2.3 cu.ft/ G.W.: 16 kgs

Simple Operation, Time Saving, Working Efficiency, Accurate Adherence  
Stone's mitre can be glued easily without professionals.



# GPW-A04A

## 45° Mitre Clamp

### Features

- ▶ Fast clamp.
- ▶ Create accurate 90° seams.
- ▶ Open space design, place fascia and spread the glue easily.
- ▶ Quick lock and release mechanism.
- ▶ Plastic caps protect slab surface from scratches.
- ▶ Aluminium & Steel construction.
- ▶ Fascias capacity :  
Max. Height : 200 mm  
Thickness : 12~40 mm

※ It is recommended to use 1 mitre clamp per 50 cm wide.  
 ※ without C-Channel Steel. Please prepare for yourself.



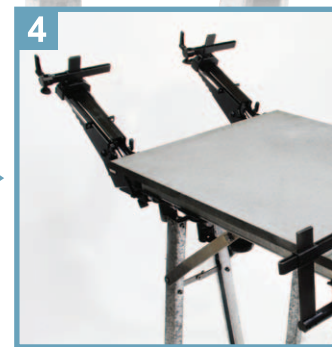
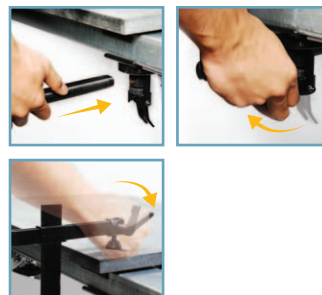
1 Prepare the C Channel Steel. Insert the GPW-A05 into the C-Channel Steel in position and fasten it. Place Plastic Caps on the C-Channel Steel in position for protecting the slab.



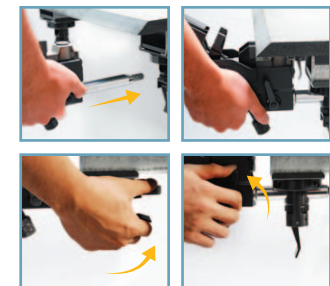
2 Place the slab on the C-Channel Steel.



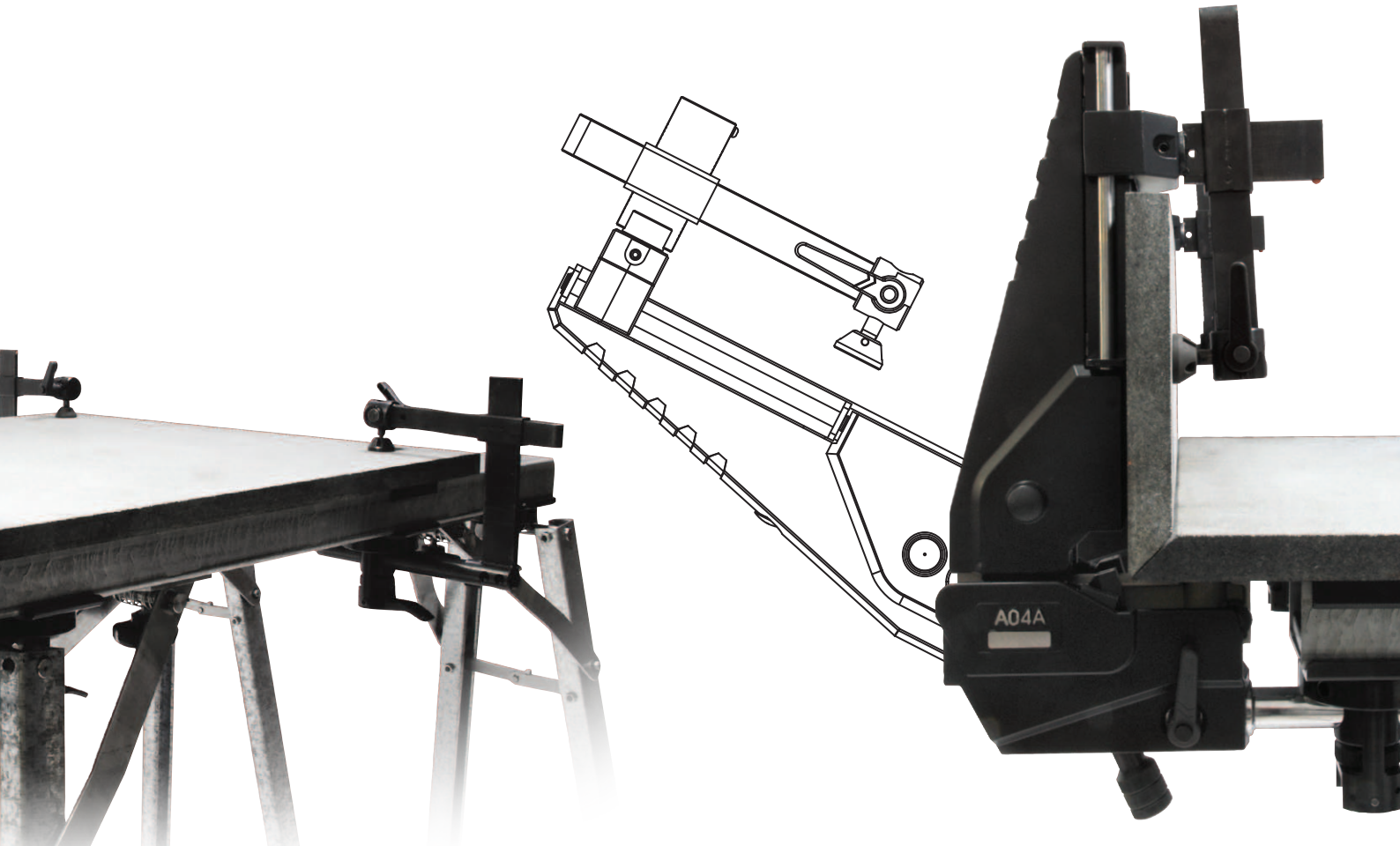
3 Use the GPW-A06 to fix the slab.



4 Insert GPW-A04A into GPW-A05 and lock it.



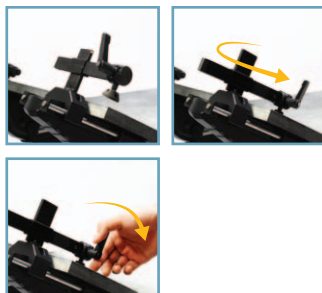




Place the fascia and ensure the two slabs are aligned.



Fix the fascia.



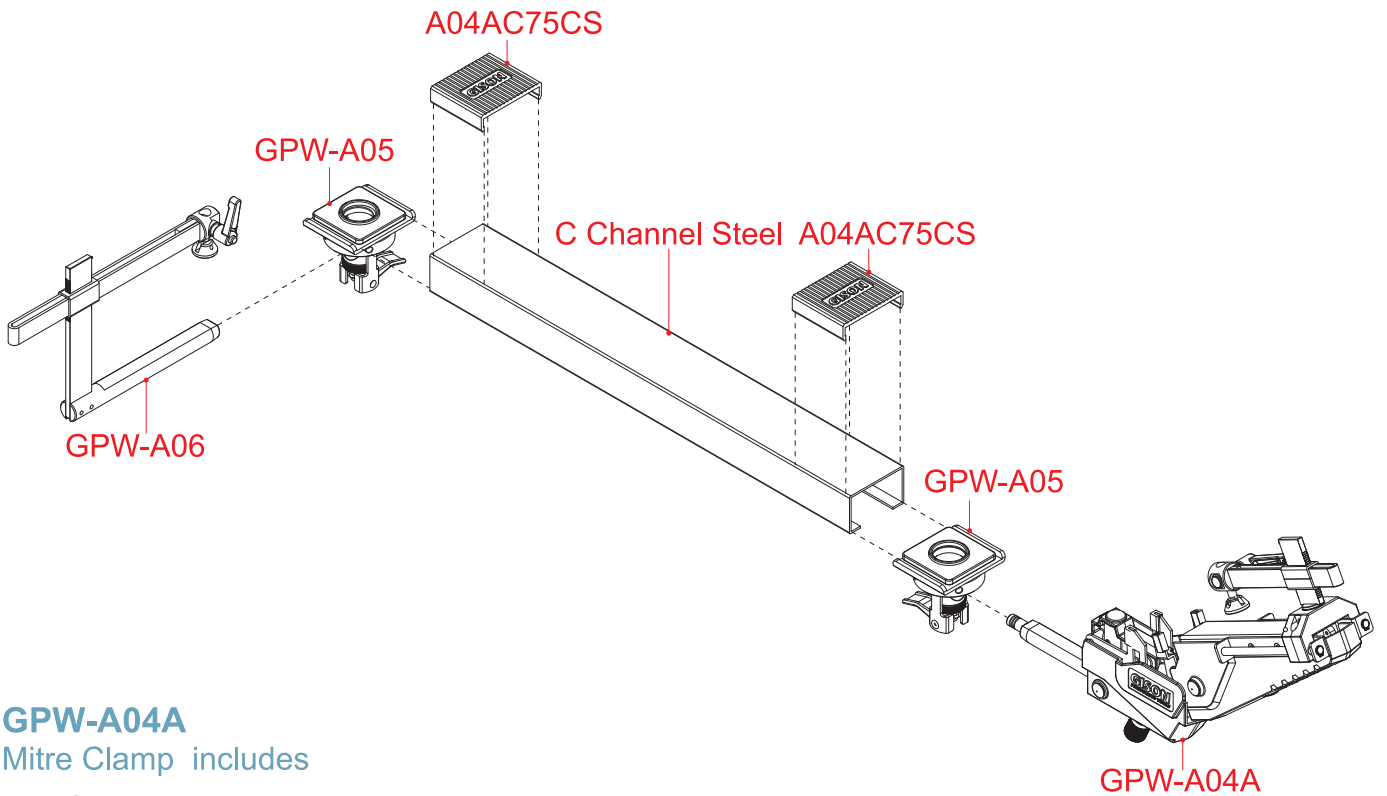
Spread the glue on the mitre of two slabs.



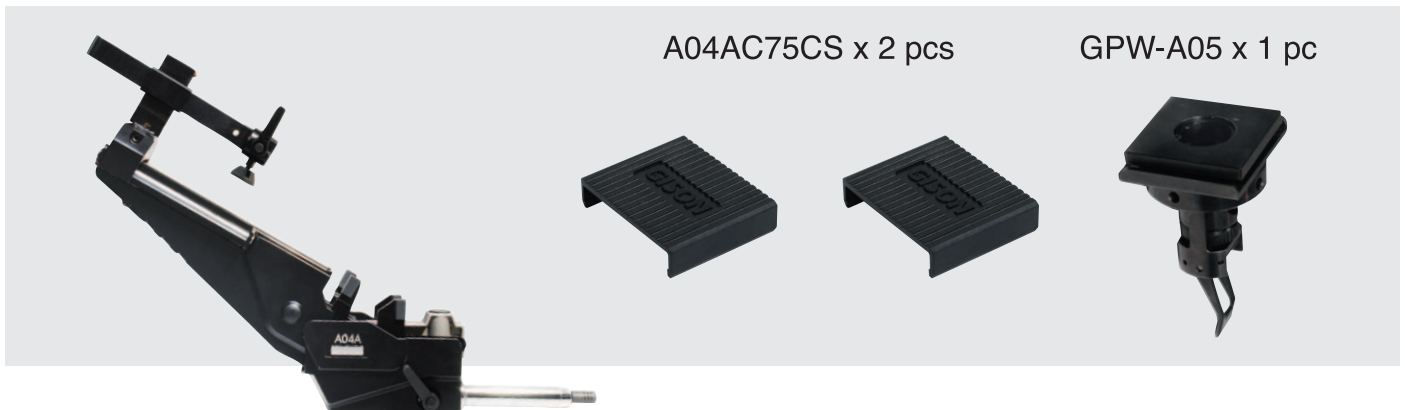
Push upright GPW-A04A, then lock it.



# Mitre Clamp



**GPW-A04A**  
Mitre Clamp includes  
3.65 kgs



A04AC75CS x 2 pcs

GPW-A05 x 1 pc

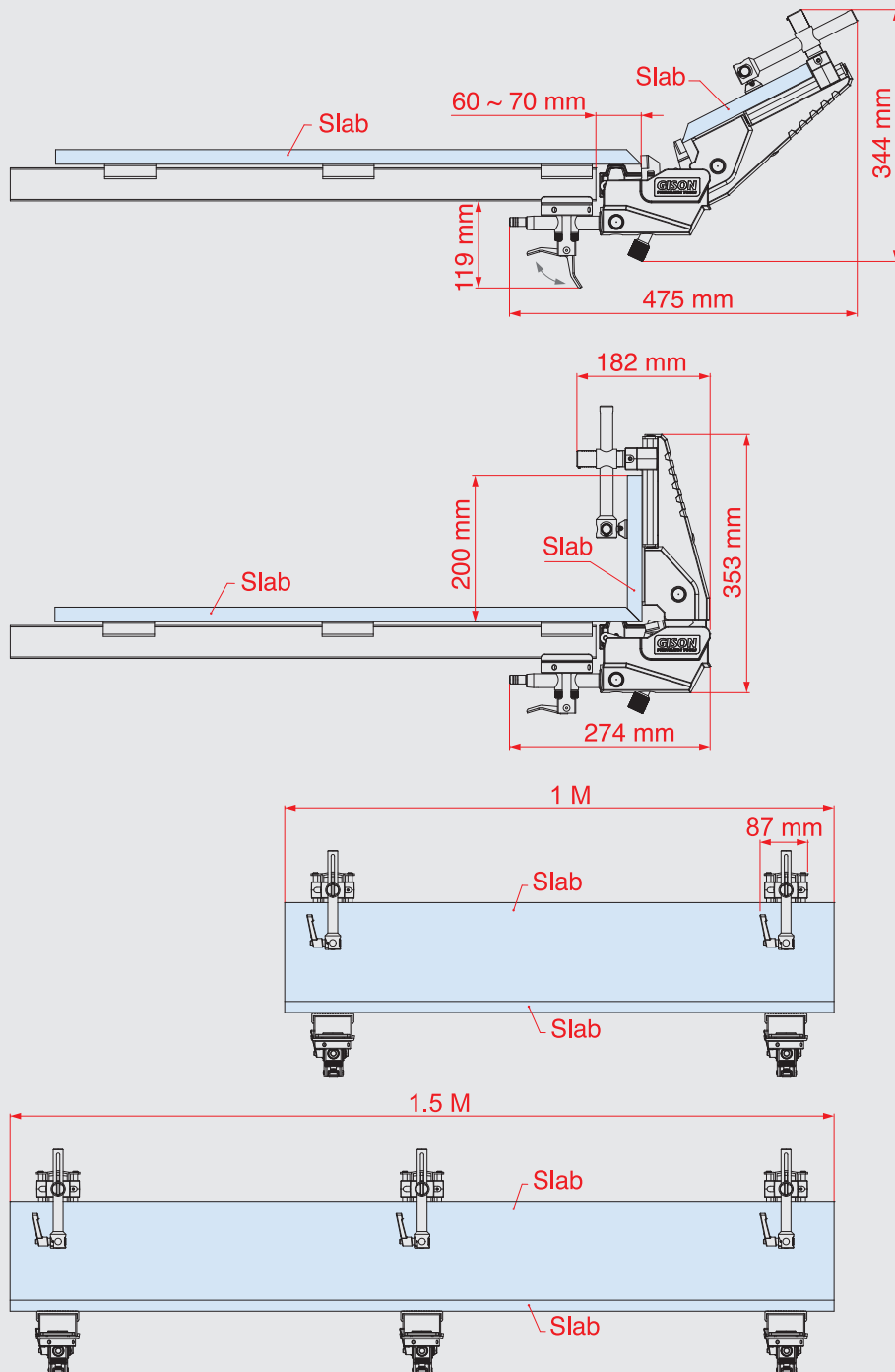
**GPW-A06**  
C Clamp  
1.09 kgs

**GPW-A05**  
Fixed Base  
1.04 kgs

**A04AC75CS**  
Plastic Cap



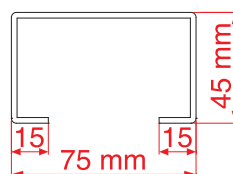
## GPW-A04A Specifications



## C-Channel Steel Specifications

Size : 45 mm x 75 mm (As shown on the right.)  
Thickness : 2.3 mm

Note : C-Channel Steel is the international standard specifications. Please consider the actual length and buy it in the "Building Materials Store".





# COMPRESSED AIR SYSTEM COMPONENTS AND NETWORK

## 6. POINT-OF USE APPLICATION :

### Filter-Regulator-Lubricator (FRL) :

FRL are needed to ensure that a tool is receiving a clean, lubricated supply of air at the proper pressure. The filter removes water, pipe deposits, rust and condensation from entering the air motor. The regulator controls air pressure to the tool. The lubricator provides a nearly constant oil / air ratio of air flows.

The oil drip rate : one drop per minute for each 20 SCFM (566 LPM).

## 5. DISTRIBUTION

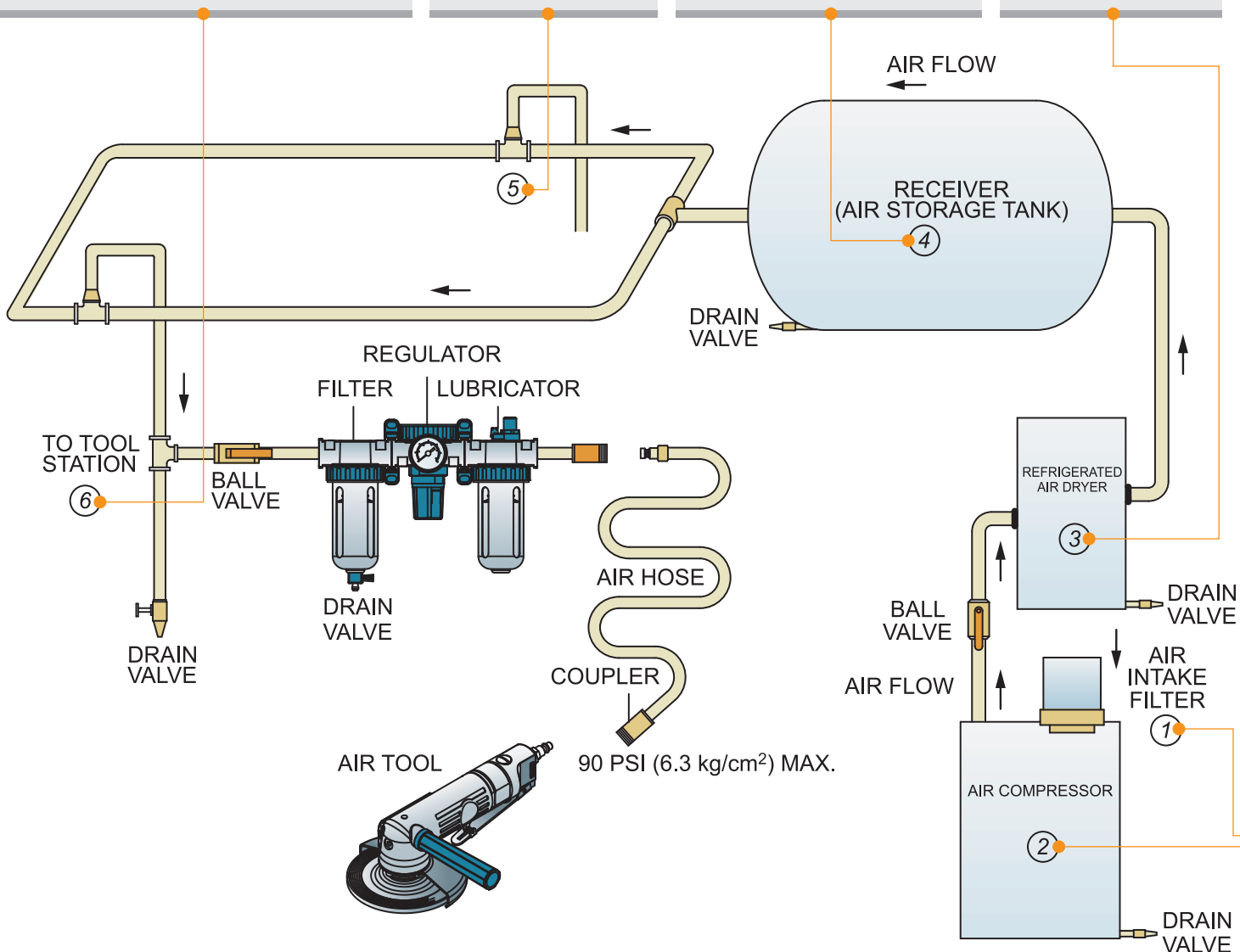
The link between supply, storage and demand. To supply adequate amount of compressed air at the required pressure to all work station.

## 4. RECEIVER

Air receiver is provided as storage to reduce fluctuations and maintain a smooth flow in the compressed air system.  
**RECEIVER TANK SIZE**  
 The more receiver the better the system.

## 3. REFRIGERATED DRYER

Compression leaves the air hot and wet. It reduces the temperature of the air and removes the excessive water.



## FACTORS RELATE TO ADEQUATE AIR FLOW

- A hose of excessive length and / or insufficient diameter can restrict the air flow.
- If you are using an air tool on a hose over 25 ft. long, it is advisable to increase the bore of the hose to the next larger size available ie. 1/4" increases to 3/8". This will ensure adequate pressure and volume of air to power the machine.
- Usage of air inline filter / regulator.
- Total number of air connections / fitting bein used.
- Prevent any blockage of air flow. Maintain adequate air flow.
- Remove or reduce condensation from the air supply.
- Note to drain water from the Drain Valve regularly.
- Regular check for leaks in all piping, joints, drains, relief valves, flexible hoses.

## 2. COMPRESSOR

The filtered air is compressed (typically 80 psig [5.6 kg/cm<sup>2</sup>] - 110 psig [7.7 kg/cm<sup>2</sup>]) using different types of compressor such as reciprocating, vane, screw or, centrifugal.

### COMPRESSOR SELECTION CRITERIA

#### A)COMPRESSOR TYPE –Recommendation :

0 to 80 PSIG (5.6 kg/cm<sup>2</sup>) : single stage compressor.  
80 to 250 PSIG (17.5 kg/cm<sup>2</sup>) / continuous usage of tools : two-stage compressor.

#### B)TOTAL AIR CONSUMPTION – Determine the total demand SCFM (LPM).

Factors to consider : demands of all equipment, tools, and other air consumption variables.

#### C)COMPRESSOR CAPACITY – HORSEPOWER (HP)

Determined total demand SCFM (LPM) : D  
Add approximately 20% for system variables :  $D_1 = D \times 1.2$   
If  $\leq 100$  SCFM (2,832 LPM) :  $hp = D_1 \div 4$   
If  $>100$  SCFM (2,832 LPM) :  $hp = D_1 \div 5$

## 1. INTAKE AIR FILTERS

Prevent dust and other contaminats from entering compressor.

## AIR SYSTEM PREVENTATIVE MAINTENANCE

1. Water in the compressor tank will cause serious corrosion to your air tools and should be drained daily to avoid excessive water in your air supply. Dirty wet air will rapidly shorten the life of your air tools.
2. Supply tool with 90 psi (6.3 kg/cm<sup>2</sup>) of clean, dry air. Higher pressure drastically reduces tool life.
3. Do not install a quick coupler directly into the tool throttle handle.
4. Prevent contaminates from entering the air motor.
5. Every day before use, remove the tool from air line and pour 2 c.c. SAE#10 oil into the machine and operate at low speed to ensure lubrication of all moving parts.
6. Lubrication : Use an air line lubricator with SAE#10 oil, adjusted to 2 ~ 3 drops per minute. If an air line lubricator can not be used, add air motor oil to the air inlet before and after use. Gears, bearing, sleeves, and sliders need to be lubricated as well.
7. Disassemble and inspect air motor and governor assembly every three months if the tool is used every day. Replace damaged or worn parts.
8. Use original factory supplied tools, spare parts and accessories.
9. Do not alter or modify the unit from the original design or function.
10. Please add moly grease about 10 c.c. to gear / impact assembly after using 60 hours.

# SAFETY INSTRUCTION

### **PNEUMATIC TOOLS SAFETY INSTRUCTIONS:**

The goal of **GISON Machinery Co., Ltd.** is to produce tools that help you work safely and efficiently. The most important safety device for this or any tools is **YOU**, Your care and good judgment are the best protection against injury, All possible hazards cannot be covered here, but we have tried to highlight some of the important ones.

#### **Air Supply and Connection Hazards:**

- Air under pressure can cause severe injury.
- Disconnect tool from air supplier before assembling or replacing.
- Be sure that switch is at "**OFF**" position before connect with air supply system.
- Always shut off air supply, drain hose of air pressure and disconnect tool from air supply when not in use, before changing accessories or when making repairs.
- Never direct air at yourself or anyone else.
- Whipping hoses can cause serious injury, always check for damaged or loose hoses and fittings.
- Do not use quick disconnect couplings at tool. See instruction for correct set-up.
- Whenever universal twist couplings are used, lock pins must be installed.
- Do not exceed maximum air pressure of 90 psi / 6.2 bar or as stated on tool nameplate.

#### **Projectile Hazards:**

- Always wear impact resistant eye and face protection when involved with or near the operation, repair or maintenance of the tools or changing accessories on the tool.
- Be sure all others in the area are wearing impact-resistant eye and face protection.
- Even small projectiles can injure eyes and cause blindness.
- Accessory bursts may be to cause serious injury.

#### **Entanglement Hazards:**

- Keep away from rotating spindle and accessory.
- Do not wear jewelry or loose clothing.
- Scalping can occur if hair is not kept away from tool and accessories.
- Choking can occur if neckwear is not kept away from tool and accessories.

#### **Operating Hazards:**

- Avoid direct contact with rotating spindle and accessory to prevent cutting of hands or other body parts. Wear gloves to help protect hands.
- Do not disable the safety lock off feature on the throttle lever.
- This tool and its accessories must not be modified.
- The liability of manufactory lapses if the user uses spare parts that are not identical with the original.
- Operators and maintenance personnel must be physically able to handle the power of the tool and capable of performing the job task.

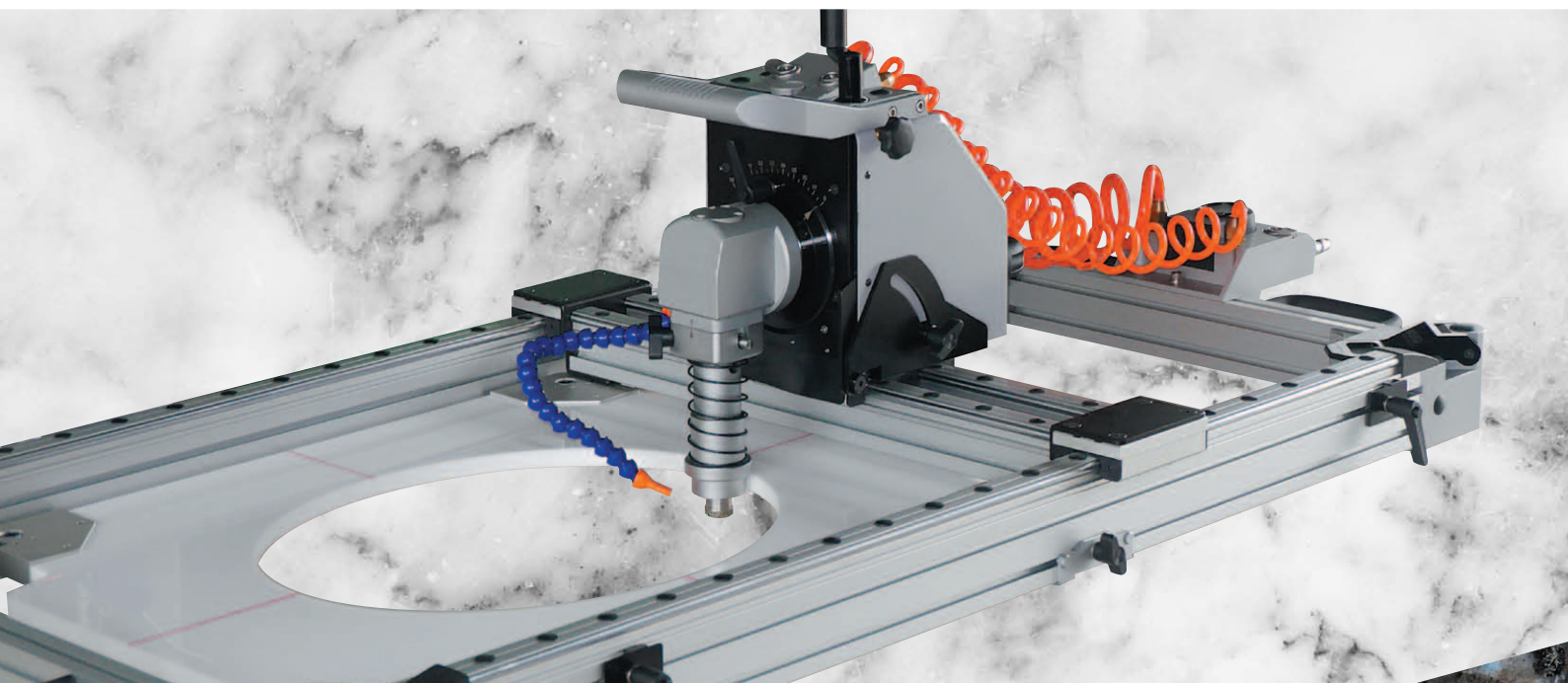
#### **Workplace Hazards:**

- Slip / Trip / Fall is a major cause of serious injury or death. Be aware of excess hose left on the walking or work surface.
- High sound levels can cause permanent hearing loss. Use hearing protection as recommended by your employer.
- Regarding the dangers to vibration. User have to obey the Labor Safe operational instruction that depend on defferent country rule to setting.
- Maintain a balanced body position and secure footing.
- Repetitive work motions, awkward positions and exposure to vibration can be harmful to hands and arms, if numbness, tingling pain or whitening of the skin occurs, stop using tool and consult a physician.
- Avoid inhaling dust or handling debris from work process that can be harmful your health.
- Operators and maintenance personnel must be physically able to handle the bulk weight and power of this tool.
- This tool is not intended for use in explosive atmospheres and is not insulated for contact with electric power sources.

## CONVERSION TABLE

Length	1 inch = 0.0254 m = 2.54 cm 1 ft = 12 inch = 30.48 cm	1 m = 39.3701 inch = 3.28084 ft
Weight	1 lb = 0.453592 kg	1 kg = 2.20462 lb
Torque	1 kg-m = 9.80665 Nm = 1 J = 0.13826 ft-lb 1 ft-lb = 1.35582 Nm = 7.233 kg-m 1 in-lb = 0.112985 ft-lb	1 Nm = 0.101972 kg-m = 10.1972 kg-cm = 0.737562 ft-lb
Pressure	1 bar = 100 kPa = 1.0197 kg/cm <sup>2</sup> 1 kg/cm <sup>2</sup> = 98.0665 kPa 1 psi = 6.89476 kPa 90 psi = 6.3 kg/cm <sup>2</sup> = 6.2 bar	1 kPa = 0.01 bar = 0.0101972 kg/cm <sup>2</sup> 1 kg/cm <sup>2</sup> = 14.232 psi (lb/inch <sup>2</sup> ) = 0.98068 bar
Power	1 kpm/s = 9.80665 W 1 kcal/s = 4.1868 kW 1 kcal/h = 1.163 W 1 hk = 735.499 W 1 hp = 745.7 W = 0.7457 kW	1 kW = 101.972 kpm/s = 0.238846 kcal/s = 859.845 kcal/h = 1.35962 hk = 1.34102 hp
Flow	1 m <sup>3</sup> /min = 16.6667 l/s = 35.3147 scfm = 1,000 l/min (LPM) = 4.97 cfm 1 scfm = 0.471947 l/s = 0.02832 m <sup>3</sup> /min = 28.32 l/min = 0.14 cfm	1 l/s = 0.06 m <sup>3</sup> /min = 2.1189 scfm
Air Pressure :		
90 psi (6.3 kg/cm <sup>2</sup> )	1 cfm = 7.1 scfm	

Easy to use, Key for stones.  
[www.gison.com.tw](http://www.gison.com.tw)



**GISON MACHINERY CO., LTD.**

No. 6, Alley 105, Lane 68, Sec. 2, Sinan Road, Wurih,  
Taichung City 41466, Taiwan

Tel: +886-4-23353202 Fax: +886-4-23352252 / 23357742

E-Mail: [gison@seed.net.tw](mailto:gison@seed.net.tw) / [sales@gison.com](mailto:sales@gison.com)

<http://www.gison.com.tw>



Printed in Jan. 2018